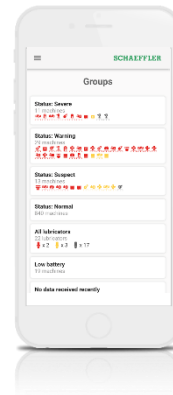
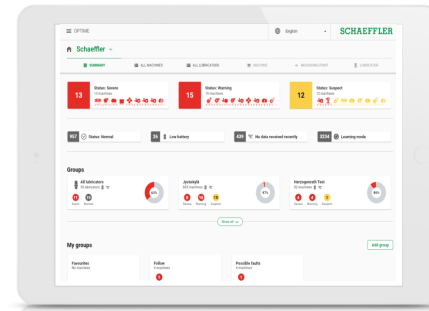
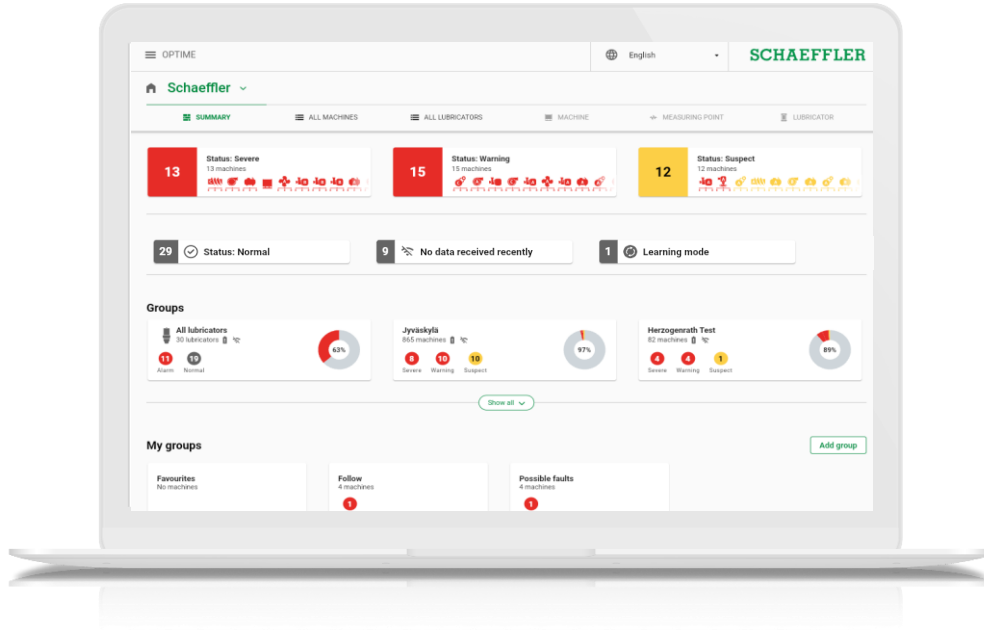


OPTIME: New Web User Interface – OPTIME Web View

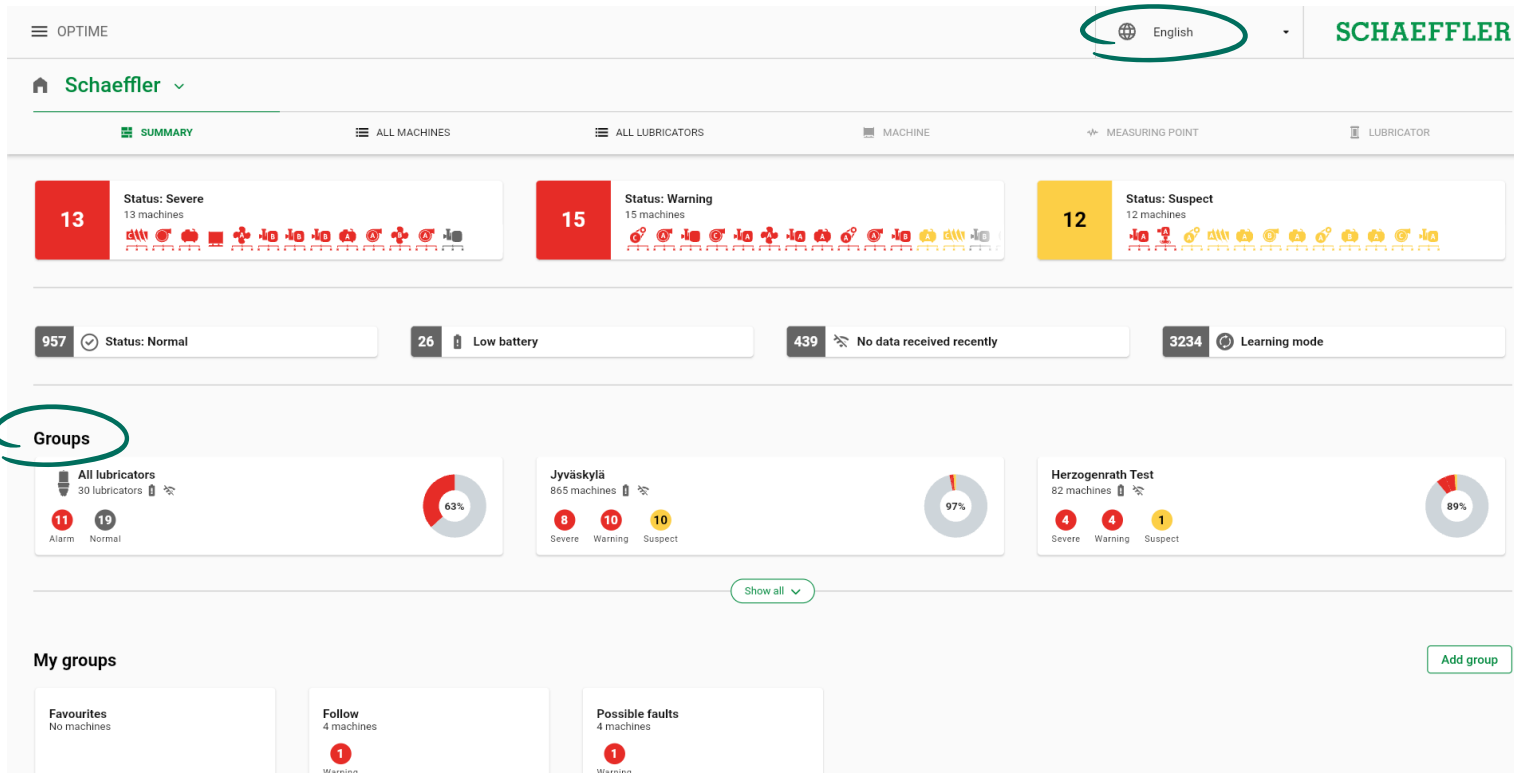
Why



In response to your customer feedback on our OPTIME web user interface, we have turned our dashboard inside out:

- New OPTIME Web View brings easy and faster navigation between assets, individual production areas and the whole factory
- The new interface is similar to the mobile app to ensure coherent user experience between different devices
- More intuitive user interface with guiding, e. g. mouse-over function
- Desktop view now also available for tablets

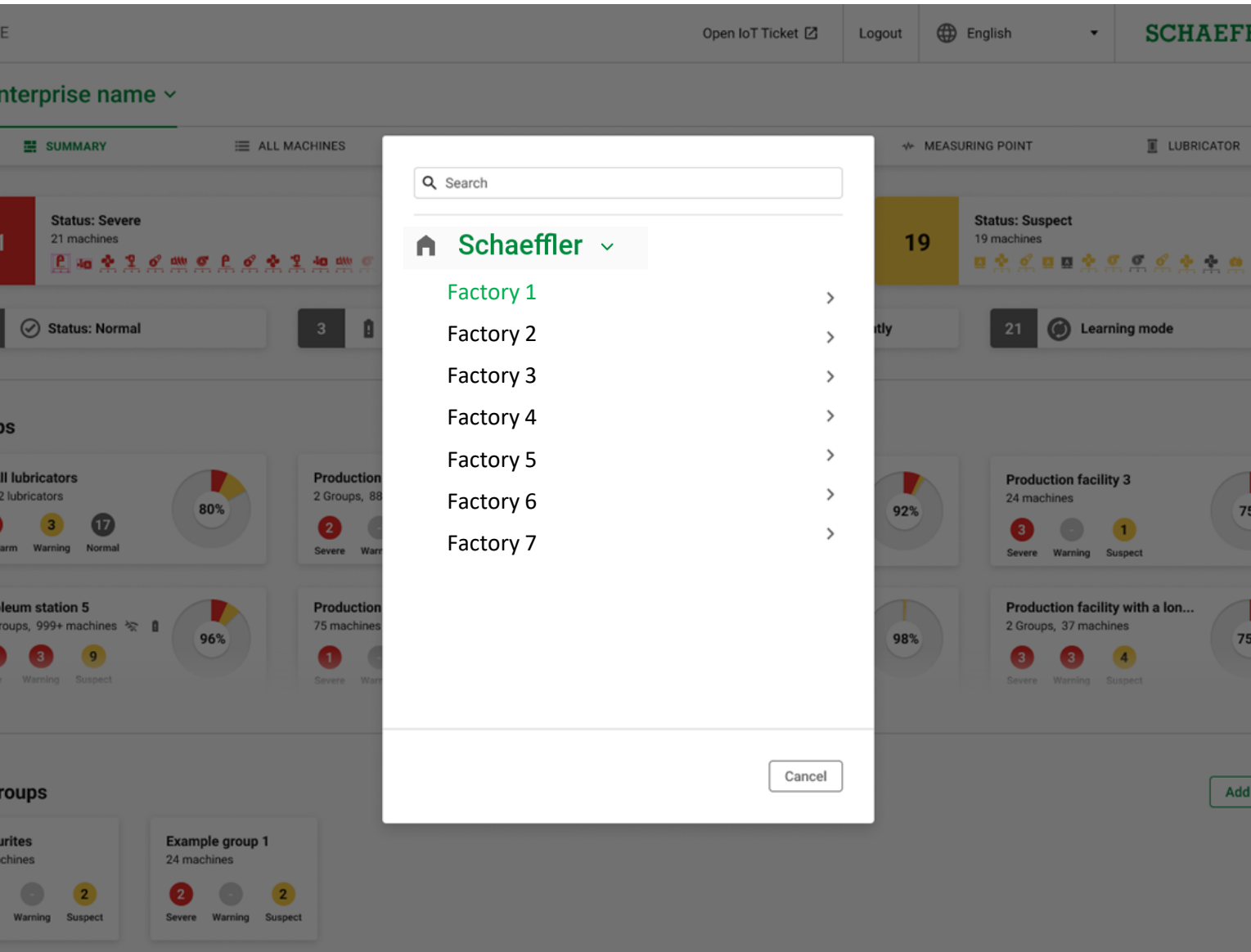
What's new: Landing page



The new landing page provides you with a full factory overview:

- Summary view on whole organisation level, not just one process area → Immediate factory level status overview
- Process areas/department overviews automatically shown as groups to give status at one glance
- More guiding functionalities for navigating the user interface, possibility to change languages directly from the web view

What's new: Improved search function



Find your assets easily and quickly:

- Tree hierarchy navigation with full search capability to easily find what you need, whether it is a machine or department of your factory
- Enhanced structure makes it even easier to work with OPTIME, especially for large customer installations and service providers
- With this we want to ensure that OPTIME users can very easily and quickly find all needed information within their OPTIME installation, no matter what the size of the installation is

What’s new: Overviews and exports

Create list overviews and export them:

- View all your assets with improved search and filtering capabilities
- Based on these filtered/sorted lists you can easily create, manage and export work lists, spare parts lists, etc...
- Share critical assets as Excel or PDF with your organisation, or import into different tools for further actions

OPTIME

Schaeffler

SUMMARY

ALL MACHINES

ALL LUBRICATORS

MACHINE

MEASURING POINT

LUBRICATOR

All lubricators (30)

Search

Stat...	Name	Type	Volu...	Machine ...
	Lubricator1	ARCANOL-MULTITOP	60 cm³	Motor1
	774096822	ARCANOL-LOAD220	60 cm³	D11
	1054430273	none / empty	60 cm³	E12
	1793691952	ARCANOL-LOAD220	60 cm³	TL1
	2111362579	ARCANOL-MULTI2	60 cm³	Kuljetin1
	1715577573	ARCANOL-MULTITOP	60 cm³	MSet2

OPTIME

SCHAEFFLER

All lubricators
Schaeffler

Report name: All_Lubricators_2023_04_28_13_54.pdf
Report date: April 28, 2023
Report author: Teemu Kivijärvi
Period: All
Criticality: 60
Type: All

OPTIME

SCHAEFFLER

Name	Type	Volume	Machine name	Notifications	Warnings	Operating status	Days left	Fill level
Lubricator1	ARCANOL-MULTITOP	60	Motor1	<div><div>1</div><div>1</div><div>0</div></div>	<div><div></div><div></div><div></div></div>	Low operating voltage 64	86 %	
406519302	ARCANOL-TEMP90	60	MSet3	<div><div>1</div><div>2</div><div>0</div></div>	<div><div></div><div></div><div></div></div>	Normal	-66	18 %
1790306965	ARCANOL-TEMP110	60	D5	<div><div>0</div><div>1</div><div>0</div></div>	<div><div></div><div></div><div></div></div>	Normal	-43	82 %
1663353828	ARCANOL-TEMP110	60	D6	<div><div>0</div><div>1</div><div>0</div></div>	<div><div></div><div></div><div></div></div>	Normal	-43	81 %
562186911	ARCANOL-TEMP110	60	D6	<div><div>0</div><div>1</div><div>0</div></div>	<div><div></div><div></div><div></div></div>	Normal	-43	83 %

English

SCHAEFFLER

yla / Building1 / Area1 / Motor1 / Lubricator1

ALL MACHINES

ALL LUBRICATORS

MACHINE

MEASURING POINT

LUBRICATOR

ation

Lubricator status

86 %

Normal

Almost empty

Empty

Operating status

Low operating voltage

Mesh network

Disconnected

Battery level

Normal

Gas release setting

1.0

Cartridge fitted

2022-11-01 10:07:37

Days left until empty

-39 days

Outlets

Notifications 1 1

Device

Outlet / Lubrication point

Machine name

Operating status

Lubricant quantity

Lubricator1_out

Motor1

Low operating voltage

60.0 cm³ in 1 month(s)