

Getting started with VIBSCANNER 2





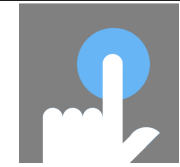
Interfaces and operating elements

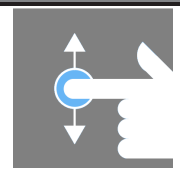
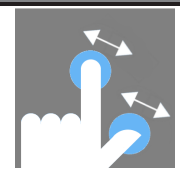
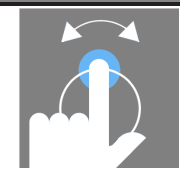


- 1: Touch display
- 2: Battery status LED
- 3: Ambient light sensor
- 4: ENTER key
- 5: Charger socket

- 6: Analog In
- 7: ON/OFF button
- 8: RFID reader
- 9: Micro USB
- 10: Stroboscope

Operation

Tap		
		
1x: Trigger function	2x: Zoom / Unzoom object	Press & Hold: Show Menu

Swipe/Scroll	Pinch	Rotate
		
Move content	Zoom / Unzoom area	Set parameters

Safety

General

- Observe the safety instructions in the VIBSCANNER 2 manual and act accordingly.
- Use the device to measure the signals on machines only in industrial sectors.
- Install the measuring equipment in accordance with the applicable safety regulations.
- Comply with the applicable safety regulations when performing measurements on a machine that is in operation. Do not reach into the machine when it is in operation.
- Use only original accessories.
- Only operate the device and the measuring equipment if they are in a functionally safe state.
- Repairs must only be carried out by authorized, specialist personnel.
- It is forbidden to make constructive or safety-related changes to the device or measuring equipment.

Environment

- Adhere to the permissible ambient conditions.
- Protect the interfaces from contamination.
- Only operate intrinsically safe devices in the Ex-zone.

Stroboscope

- The stroboscope generates very bright flashes of light. Do not look into the light source.
- Do not direct the light beam towards people.
- Do not concentrate or focus the light beam.
- The effects of light can trigger photosensitive epilepsy. Users with a neurological proclivity for epileptic seizures must not operate the stroboscope.
- Interference with active implants (e.g. pacemakers) cannot be ruled out. Wearers of active implants must not operate the stroboscope.

Battery

- Only charge the battery by using the power adapter supplied. Observe the accompanying operating manual.
- Do not discharge the battery too deeply (< 15%).
- Discharge the battery so that the remaining battery power is less than 60% if the device is to be sent by air freight.
- Do not send the device by air freight if the battery is defective.

Conformity

- VIBSCANNER 2 complies with the relevant European directives. The declaration of conformity can be found at www.pruftechnik.com.

VIBSCANNER 2 Manual

The manual is stored on the device as a PDF file.

Downloading the manual

- Connect VIBSCANNER 2 to a PC via USB.
- Open the following folder in Windows Explorer:
PC:\VIBSCANNER2\System Data\Manuals\English
- Copy the PDF file to the PC.
- Open the file using a suitable program (e.g. Adobe Acrobat Reader).

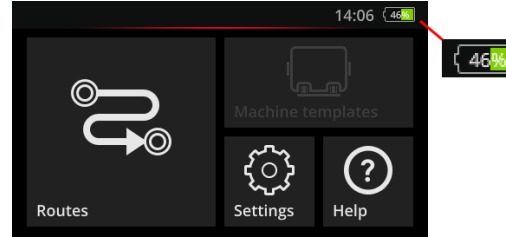


Battery

Charge the battery if the remaining battery power drops below 15% of full capacity or if the battery status LED lights red.

Checking the battery status

The remaining battery power is displayed by means of the battery icon.



The display is switched off in **Sleep Mode**. The remaining battery power is indicated by the battery status LED which pulsates **slowly** :

Charge	0 ...14%	15...29%	30...100%
LED	Red	Orange	Green

Charging the battery

VIBSCANNER 2 can be switched on or off when charging. Temperature range for charging: +10 ... +40°C (50 ... 104°F).

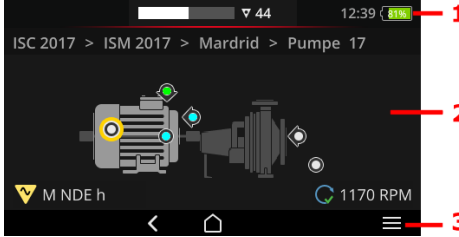
- Connect the charger to the charger socket.
- Connect the charger to a suitable power socket.

When charging, the battery status LED indicates the following states:

State	Error*	Charging process	Battery is charged
LED color	Red	Red Orange Green	Green
LED pulse rate	Very fast	Fast	Lights up continuously

* e.g. Temperature too high / too low

Display



1: Status bar - time; battery status; number of non-measured machine trains and alarm status (route mode).

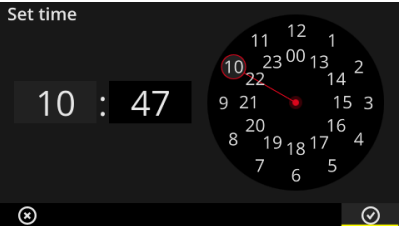
2: Display field - Application-specific content. Operation via the touch functions and the ENTER key.

3: Context line - Context-dependent control elements for navigation and operation. Operation by means of tapping and the ENTER key.

HOME	HOME - directs to the startup screen
BACK	BACK - returns to the previous screen
MENU	MENU - opens a context-dependent menu

Date and time

- Tap **Settings** icon in the startup screen.
- Tap **Date & Time**.
- Tap **Set Date**.
- Tap on the current date and confirm with OK .
- Tap **Set Time**.
- Tap on the current hour in the dial (see below). The dial then changes to the minutes display.
- Set the minutes by rotating the minute hand.
- Confirm with OK .
- Set the **Time Zone** and enable the **24-hour Display Format** if required.



Data exchange

Connect VIBSCANNER 2 to the PC. Use the supplied USB cable.

Routes and machine templates can be transferred using OMNITREND Center software.

Via the Windows file system the following files can be transferred:

- **Update** - copy the file 'VSC2_vXXX.rom' to the **System Data\Update** folder on the device.
- **VIBSCANNER 2 Manual** - the PDF file can be found on the device in the **System Data\Manuals\Language** folder.



Optimizing energy consumption

In **Sleep Mode**, the display switches off and the processor consumes less energy.

The device **automatically** enters Sleep Mode if it is not operated within a set duration. **[Settings > Power Options > Sleep]**.

To put the device into sleep mode **manually**, briefly press the on/off button until the display switches off.

The device switches off automatically if it is not operated within a set duration. **[Settings > Power Options > Power off]**.

