

Step by Step instructions

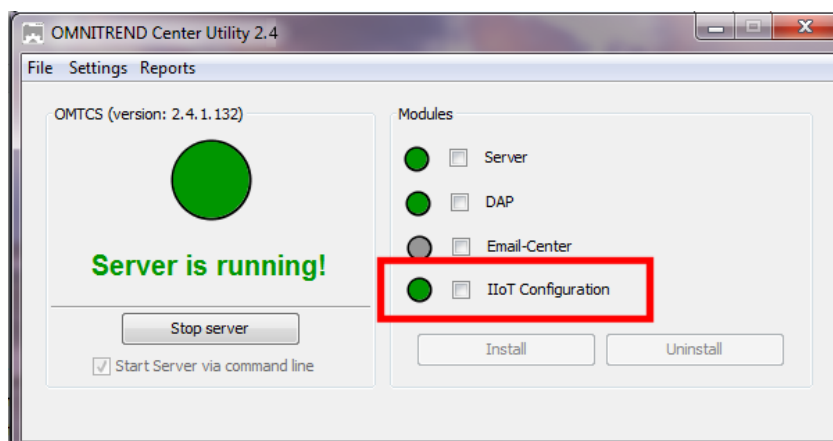
MQTT configuration for Online devices

1. Update OMNITREND Center - OMTC

- Update OMTC Server and Client to version **2.4.1** or higher.

2. Start OMNITREND Center - OMTC

- Start OMNITREND Center Utility.
- Activate **IIoT Configuration** module.



- Start the OMTC Server.
- Start the OMTC Client.

3. Update Online devices firmware

- Update Kernels of all Online devices to version **KW14/2019** or higher.

4. Install OMNITREND Asset View - OAV

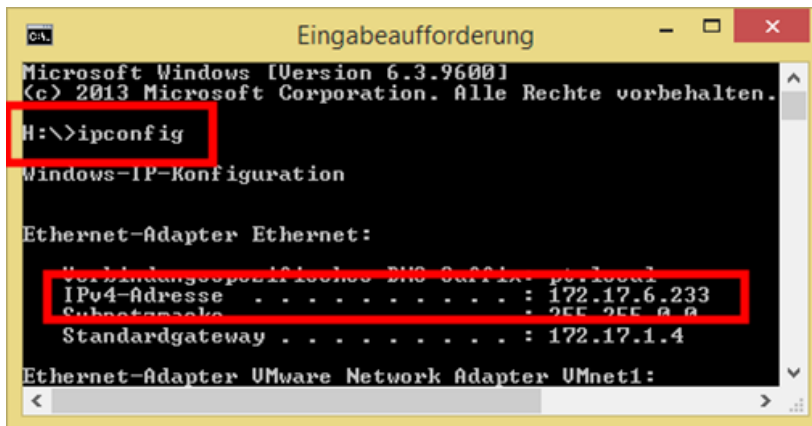
- Install OAV on a Server PC.

OAV installation file can be found on the "OMNITREND Center - VIB 8.200" USB pendrive. Path: ./Asset View/ setup.exe.

OAV does not have to be installed on the server where OMTC is installed.

An MQTT broker ('mosquito') is installed during the OAV installation. You need the broker IP address for MQTT configuration of the Online devices.

- Determine the IP address of the OAV Server PC:
Open the Command line ('cmd.exe') and enter '**ipconfig**':




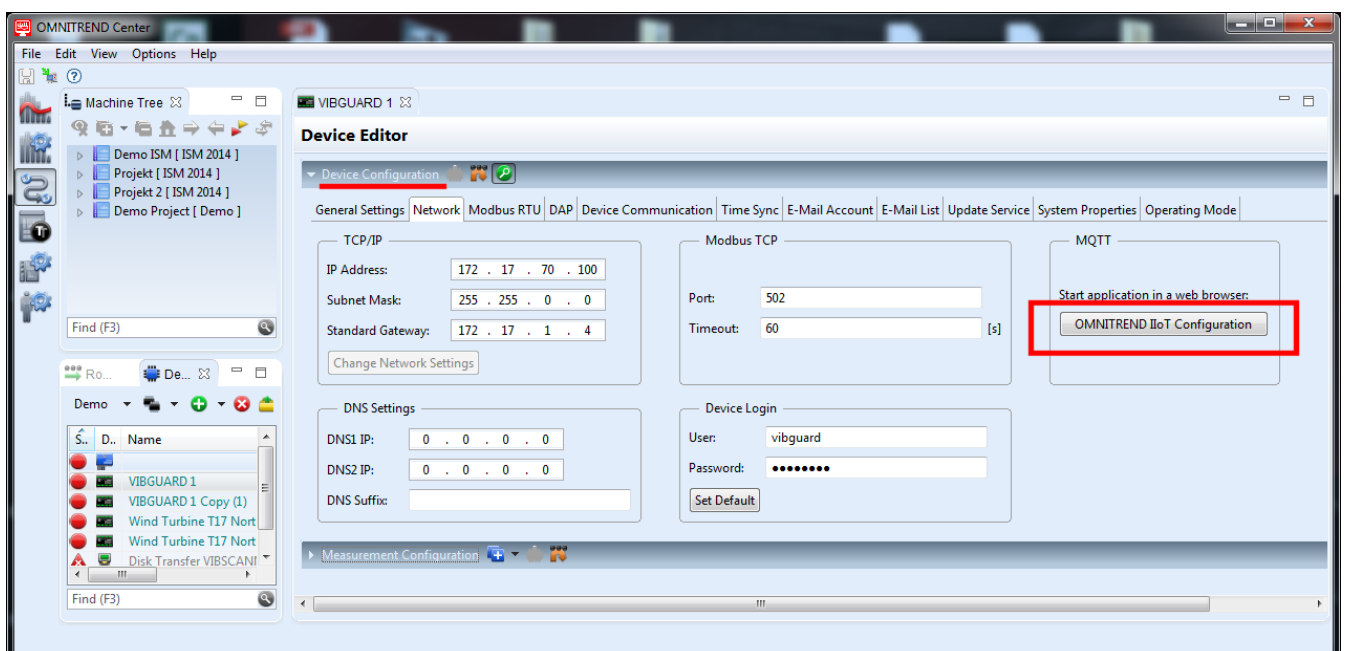
5. Start OMNITREND Asset View - OAV

- Start OAV in a Browser:
 - Enter the IP address of the OAV Server PC with port **8080** extension.
Example: 172.17.6.233:8080
- Enter the login credentials: **User = admin; Password = admin.**
The initial OAV screen appears empty. Asset data will be shown after MQTT data transfer is activated in the Online devices.

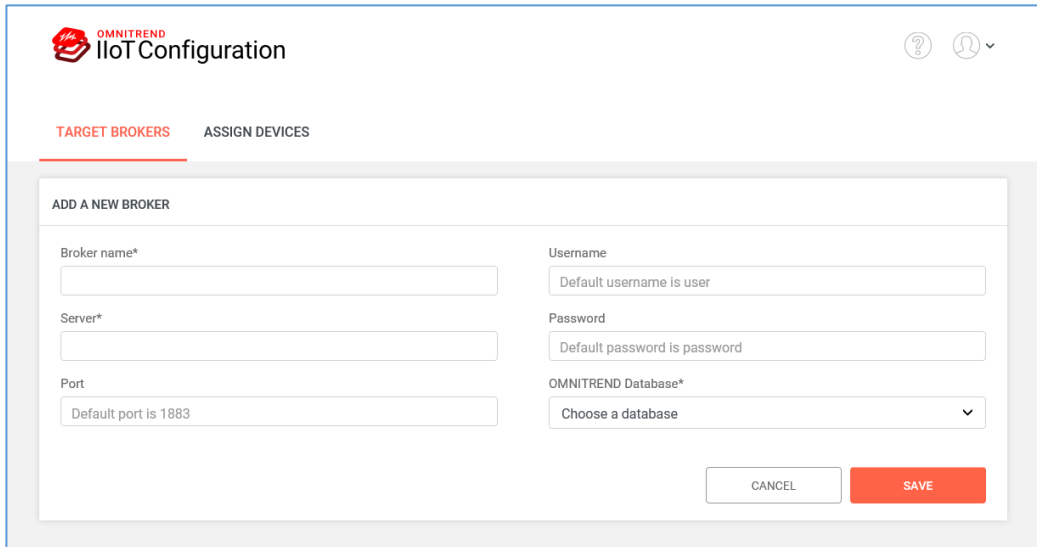
6. Configure Online Device

In the **OMTC Client** do the following:

- Open the **Device Editor** for the Online device to be configured.
- Click on  **Expand device configuration** in the **Device Configuration** section.
- Open the **Network** tab.
- Click on the **OMNITREND IIoT Configuration** button in the MQTT field.



- OMNITREND IIoT Configuration starts in a Browser.
- Login with your OMTC user name and password (admin user role is required).
- In the **TARGET BROKERS** tab enter the required broker parameters:



The screenshot shows the 'OMNITREND IIoT Configuration' web interface. The 'TARGET BROKERS' tab is active. Below the tab, there is a section titled 'ADD A NEW BROKER'. This section contains several input fields: 'Broker name*', 'Server*', 'Port' (with a default value of 1883), 'Username' (with a default value of 'user'), 'Password' (with a default value of 'password'), and 'OMNITREND Database*' (a dropdown menu with 'Choose a database' selected). At the bottom right of this section are 'CANCEL' and 'SAVE' buttons.

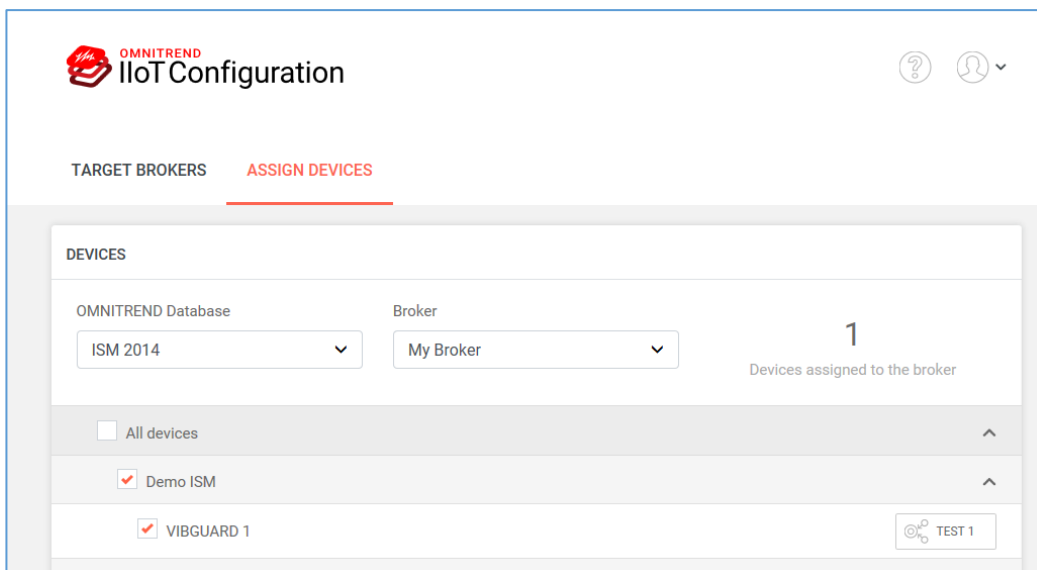
Server = Servername or IP address of the OAV Server PC (see section 4)

Port = 1883 (default)

Username = user / Password = password (default)

OMNITREND Database = Select the database which includes the Online device

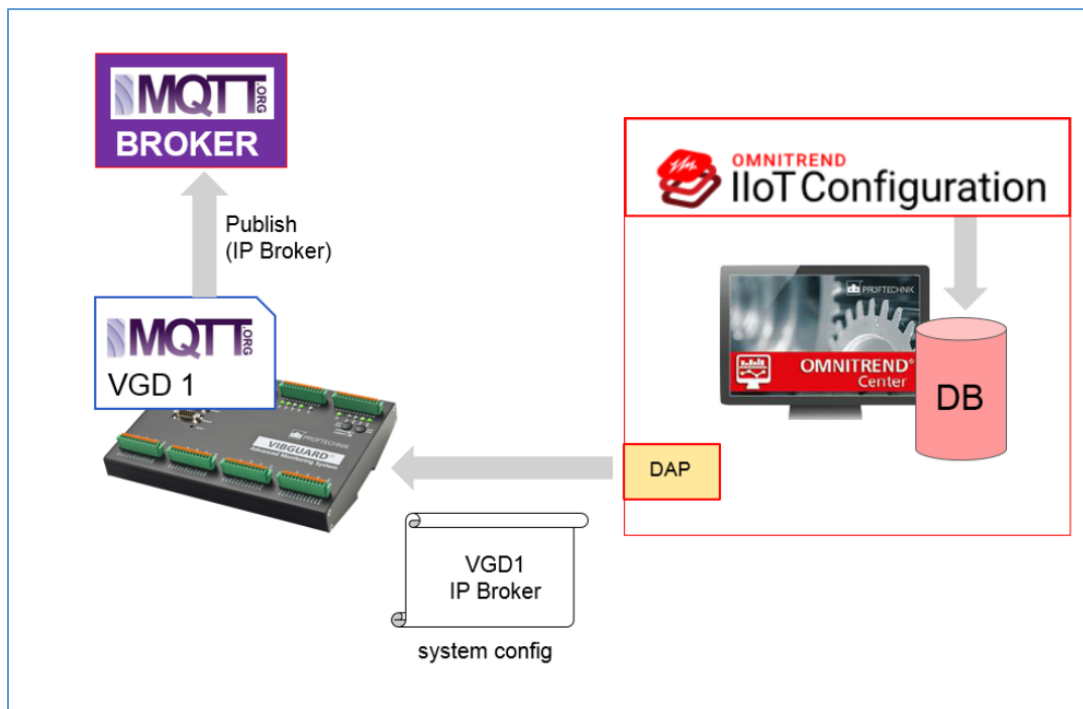
- Click on **SAVE**.
- In the **ASSIGN DEVICES** tab assign the respective Online device to the Broker:





The screenshot shows the 'OMNITREND IIoT Configuration' web interface with the 'ASSIGN DEVICES' tab active. The 'DEVICES' section contains two dropdown menus: 'OMNITREND Database' (set to 'ISM 2014') and 'Broker' (set to 'My Broker'). To the right of these menus, it displays '1' and 'Devices assigned to the broker'. Below this, there is a list of devices with checkboxes: 'All devices' (unchecked), 'Demo ISM' (checked), and 'VIBGUARD 1' (checked). At the bottom right, there is a 'TEST 1' button.

- Select the appropriate **OMNITREND Database**.
- Select the new added **Broker**. All projects in the selected database are listed.
- Select the Online device(s) that should send the data to the broker.
- Click on **SAVE**.

These settings comprise the MQTT configuration. MQTT configuration complements the existing device configuration (system / measurement config). The device configuration is transferred to the Online device via the DAP interface.



7. Send configuration files to Online device

- Close all open device editors.
- Open the respective device editor.
- In the **Device Configuration** section click on  to send the system configuration file to the Online device.
- In the **Measurement Configuration** section click on  to send the measurement configuration file to the Online device.

8. Check data reception in OMNITREND Asset View