



MarelliMotori
Inspired solutions

Our Reference: _____

Customer: _____

MOTOR TYPE		A6C 180 L4
RATED OUTPUT	kW	22
EFFICIENCY CLASS		IE3
DUTY		S1
RATED VOLTAGE	V	400 Y
RATED FREQUENCY	Hz	50
RATED CURRENT	A	39.7
RATED SPEED	rpm	1470
MOUNTING	IM	VERTICAL
EXECUTION		TEFC
ATEX EXECUTION		-
PROTECTION DEGREE	IP	55
COOLING METHOD	IC	411
MOMENT OF INERTIA	kgm ²	0.18
AMBIENT TEMPERATURE	°C	40
SITE ALTITUDE		1000
CLASSIFICATION		-
INSULATION CLASS		F
TEMPERATURE RISE		B
APPLICABLE STANDARDS		IEC 60034-1

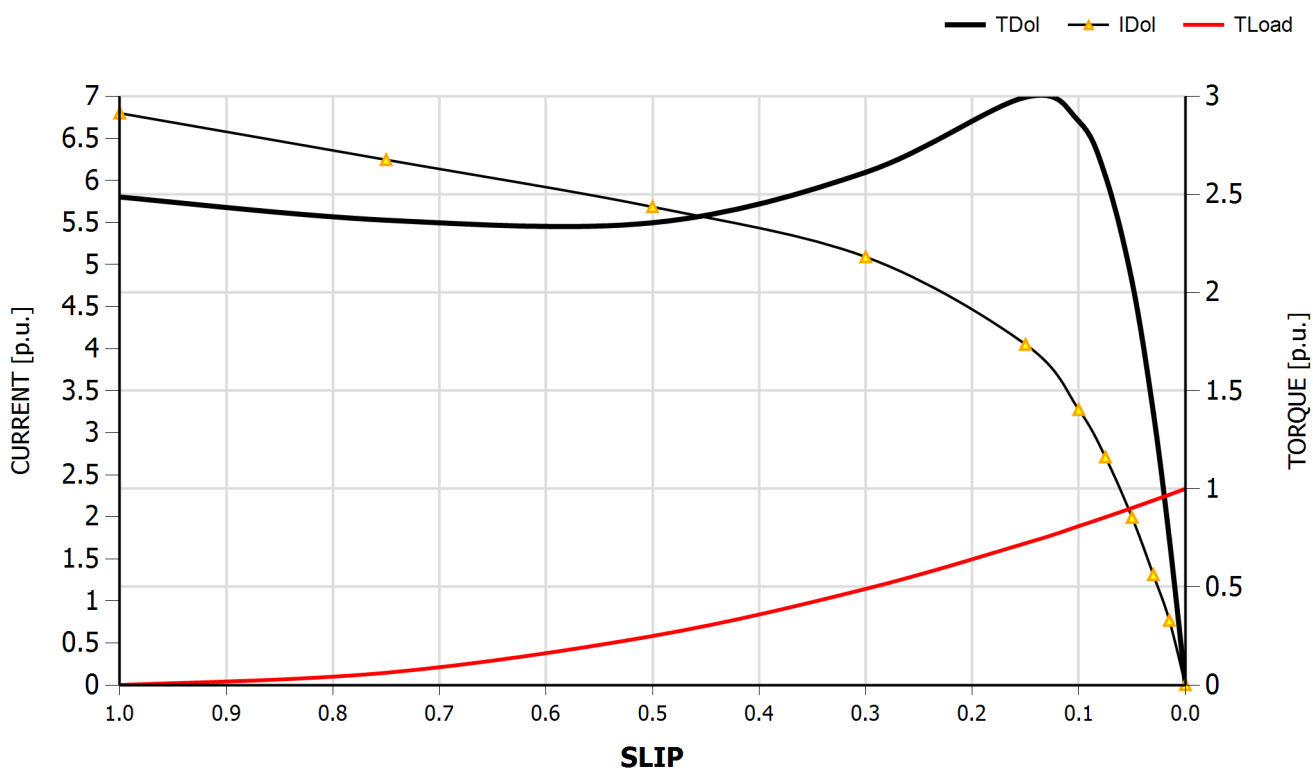
			LOAD		
			4/4	3/4	2/4
EFFICIENCY		%	93.0%	93.4%	92.7%
POWER FACTOR			0.86		
TORQUE	FULL LOAD	Nm	143		
	LOCKED ROTOR (DOL)	p.u.	2.49		
	PULL-OUT (DOL)	p.u.	3		
LOCKED ROTOR CURRENT (DOL)		p.u.	6.8		
STARTING METHOD			DOL		
THERMAL PROTECTIONS	WINDINGS		-		
	BEARINGS		-		
HEATING ELEMENTS		V / W	-		

MECHANICAL DATA

BEARING TYPE	D-end		6310-Z-C3
	N-end		6210-Z-C3
LUBRICATION			GREASE
DIRECTION of ROTATION			CW or CCW
NO LOAD NOISE		dB(A)	63
WEIGHT		kg	165
VIBRATION LEVEL			A
PAINTING			RAL 5010

A6C 180 L4 - 400 V - 50 Hz- 22 kW - S1

DOL



Approx starting time

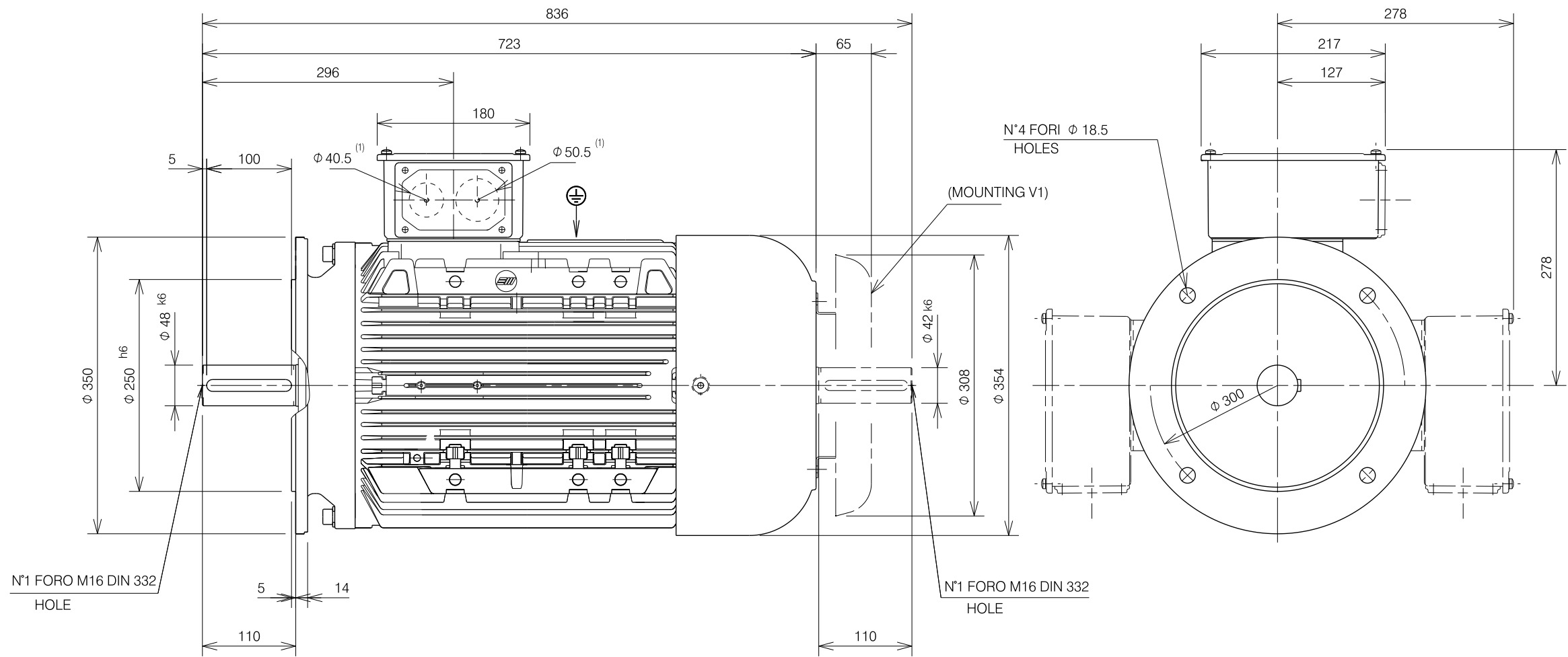
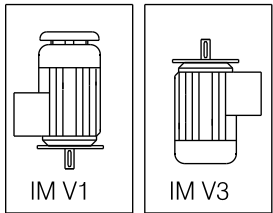
Temperature rise after starting

Allowed starting (0.6 sec)

Temperature for each starting 1 K

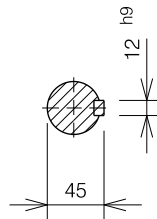
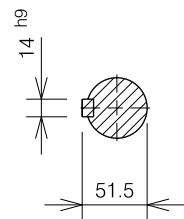
Max allowed cold starting 10

Max allowed warm starting 5



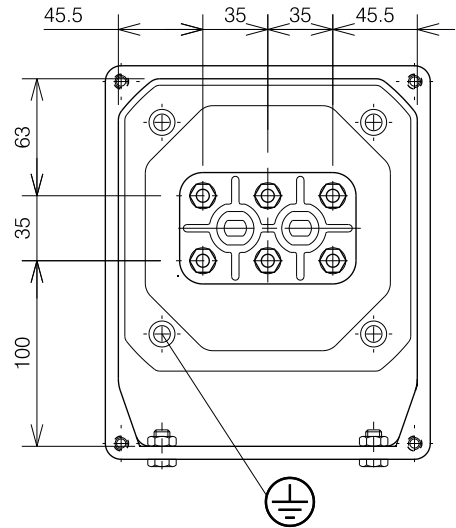
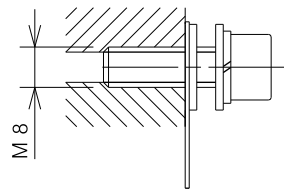
N°1 FORO M16 DIN 332
HOLE

N°1 FORO M16 DIN 332
HOLE




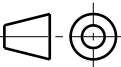
SCATOLA MORSETTI
TERMINAL BOX

PART.



(1): Fori a frattura prestabilita
Knockout opening

DIMENSIONI IN mm
DIMENSIONS IN mm

=	PRIMA EMISSIONE				25/10/2013	E.Soso
REV	DESCRIZIONE				DATA	FIRMA
 MarelliMotori	SOSTITUISCE IL COD.	 CAD	SCALA	DISEGNATORE	25/10/2013	E.Soso
	-		--	CONTR./C.UFF.	31/10/2013	H.Benhima
			A3	CONTR. ATEX		
INGOMBRO			A18AD301B			=
A6C 180 2-6 B5-V1						REV
Questo documento e' di proprieta' di Marelli Motori S.p.A. Nessun particolare di questo documento puo' essere copiato o riprodotto in alcun modo. Questa informazione e' soggetta a costante controllo. This document is the property of Marelli Motori S.p.A. No part of this document may be copied or reproduced in any way. This information is subject to constant review.						