



MECHANICAL TECHNOLOGIES

ELECTROSPINDLES  
SPINDLES  
HEADS  
REPAIR and SERVICE

Solutions for  
**MACHINE TOOLS**

# Our PRODUCTS

ITALY

*Taylor-made*

The real leverage, that has allowed IMA TECNO to progress rapidly and achieve the awareness of being able to provide added value to machine tool manufacturers, is represented by the constant attention to the future, focused on technological innovation.

In this spirit **IMA TECNO has been able to offer a high degree of operational flexibility in the realization of its products, aimed at satisfying the specific needs of the Customer.**

Thanks to the productive experience acquired in many years of activity and to the high specialization of the staff, IMA TECNO can supply an important and wide range represented by:



Electro spindles



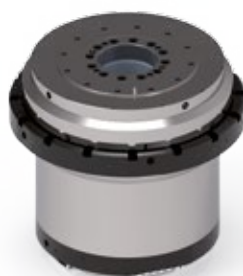
Motorizations



Ram Gear Box



Heads and Extensions



Tables HT and HS



Screw Support



## R & D |

A young team, expertly supported by technical specialists which can guarantee its Customers a complete co-operation both in terms of solution / innovative proposals and operational support.

## | MANUFACTURING

The production process is programmed on the basis of the defined deliveries with Customers and the different construction phases are strictly followed in the materials procurement phase as well as in the assembly and testing times.



## SERVICE & REPAIR |

Service and repair activities are for IMA TECNO of great importance as they represent the way to confirm and maintain the quality of a product which is highly qualifying for the machine itself.

## | TEST & QUALITY CONTROL

All products are tested individually according to standard specifications with any further integrations requested by Customers. Reports and certification documents are provided with the product.



## MILLING electro spindles

The wide range of IMA TECNO milling electro spindles has been developed to meet the many needs of working on different types of materials.

One of IMA Tecno's peculiar features is the project and realization of products that meet specific customer requirements in terms of spindle axis rigidity, power, torque and rotational speed.

Careful testing and running-in, carried out on each unit produced, makes it possible to provide a complete guarantee and certification of the quality of IMA TECNO product.

The milling electro spindles can be configured and customized according to the field of application on the basis of characteristics/components such as:

- Body with jacket or without jacket
- Asynchronous/synchronous motor
- Temperature sensor control for motor and bearings
- Incremental encoder
- Vibration sensor
- High precision bearings
- Grease/Air-Oil lubrication bearings
- Bearings variable preload
- Spindle growth sensor
- Tool-holder retention
- Rotary unit
- Minimal quantity lubrication (MQL)
- External cooling nozzles
- Housing



Aluminum machining



Titanium machining

## AEROSPACE line

Ima Tecno's milling electro spindles in the airspace area are recognized and appreciated from the most important global manufacturers.

IMA TECNO continues to develop airspace milling electro spindles implementing the most recent technologies available.

The essential characteristics for the milling electro spindles of Aerospace line are:

- **High power and high speed for the machining of aluminum, resins, and carbon components.**
- **High torque on low speed for the machining of titanium and steel components.**

### ALUMINUM machining

some models

Code	Body Diameter	Power S1-S6	Torque S1-S6	Nominal Speed	Max Speed	Tool Interface	Lubrication
	mm	kW	Nm	rpm	rpm	type	type
11050A080	150	12-15	6,5-8	17.700	24.000	HSK A50	grease for life
11050A060	150	18-21	9-11	18.000	35.000	HSK A50	air / oil
11050A110	160	13-16	17-22	14.000	30.000	HSK A50	air / oil
11063A470	180	44-55	33-41	13.000	20.000	HSK A63	grease for life
11063A1190	180	44-55	33-41	13.000	22.000	HSK A63	grease for life
11063A450	195	50-61	105-128	5.000	20.000	HSK A63	grease for life
11063A840	195	50-58	80-94	5.900	24.000	HSK A63	grease for life
11063A870	205	70-87	56-66	12.000	28.000	HSK A63	air / oil
11063A990	215	80-92	62-72	12.270	28.000	HSK A63	air / oil
11063A670	220	100-125	56-70	17.000	30.000	HSK A63	air / oil
11063A940	230	80-100	64-80	12.000	24.000	HSK A63	air / oil
11080A020	230	80-100	90-113	8.500	24.000	HSK A80	air / oil

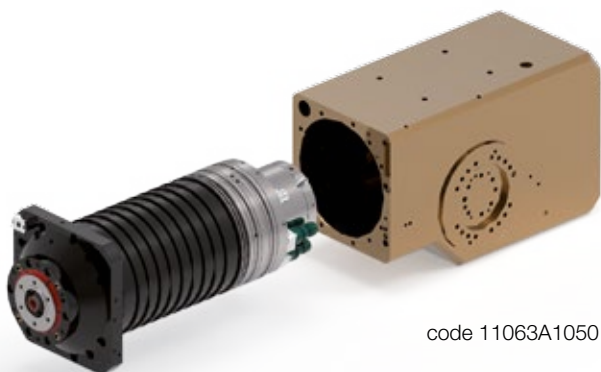
### TITANIUM machining

some models

Code	Body Diameter	Power S1-S6	Torque S1-S6	Nominal Speed	Max Speed	Tool Interface	Lubrication
	mm	kW	Nm	rpm	rpm	type	type
11100A240	240	83-90	279-375	2.290	12.000	HSK A100	air / oil
11500A010	284	63-70	500-570	1.200	8.000	ISO 50	grease for life
11100A290	285	60-74	421-519	1.356	8.000	HSK A100	air / oil
11500A270	322	63-79	334-418	1.800	12.000	ISO 50	air / oil
11500A370	322	55-61	751-1.186	711	6.000	ISO 50	air / oil
11100A300	322	74-84	609-730	1.157	8.000	HSK A100	air / oil
11100A340	322	106-113	1.098-1.546	923	6.000	HSK A100	air / oil
11100A330	322	120-126	1.121-1.578	1.030	8.000	HSK A100	air / oil
11160A010	350	138-151	1.382-1.989	968	3.500	HSK A160	air / oil



# UNIVERSAL line



code 11063A1050

IMA TECNO has developed overtime **various typologies of electro spindles** particularly suitable to the various applications on machine tools dedicated to the machining of components in the following sectors:

- General mechanics
- Moulds and Dies
- Energy

some models

Code	Body Dimension	Power S1-S6	Torque S1-S6	Nominal Speed	Max Speed	Tool Interface	Lubrication
	mm	kW	Nm	rpm	rpm	type	type
<b>11040A040</b>	120	9-11	7,5-9	11.800	30.000	HSK A40	grease for life
<b>11050A020</b>	136	17-20	11-13	14.700	36.000	HSK A50	air / oil
<b>11050A090</b>	140	20-24	12-14	16.000	24.000	HSK A50	grease for life
<b>11050A060</b>	150	12-15	6,5-8	17.800	35.000	HSK A50	air / oil
<b>11032A020</b>	150x150	6,5-7,5	5,5-6	11.800	35.000	HSK E32	grease for life
<b>11032A040</b>	150x150	12,5-14	8-9,5	15.000	18.000	HSK E32	grease for life
<b>11063A450</b>	176	30-35	42-49	5.500	20.000	HSK A63	grease for life
<b>11063A660</b>	180	26-32	60-75	4.100	22.000	HSK A63	grease for life
<b>11063A740</b>	200	24-33	86-120	2.670	18.000	HSK A63	grease for life
<b>11063A830</b>	205	18-23	57-73	3.000	20.000	HSK A63	grease for life
<b>11063A1050</b>	208	28-32	89-102	3.000	24.000	HSK A63	air / oil
<b>11063A1070</b>	210	20-24	32-38	6.020	18.000	HSK A63	grease for life
<b>11063A1180</b>	210	50-63	88-111	8.150	20.000	HSK A63	grease for life
<b>11063A1110</b>	220	24-33	86-120	2.670	18.000	HSK A63	grease for life
<b>11100A260</b>	220	45-53	172-205	2.500	15.000	HSK A100	air / oil
<b>11500A150</b>	225	38-44	212-338	1.920	8.000	ISO 50	grease for life
<b>11063A960</b>	230	36-41	146-161	5.000	18.000	HSK A63	air / oil
<b>11100A170</b>	230	56-67	164-197	3.270	14.000	HSK A100	grease for life
<b>11500A380</b>	230	56-66	253-307	2.230	10.000	ISO 50	grease for life
<b>11100A210</b>	240	50-56	237-256	2.100	10.000	HSK A100	grease for life
<b>11100A380</b>	250	83-90	280-375	2.890	12.000	HSK A100	air / oil
<b>11100A130</b>	260	50-60	238-285	2.010	16.000	HSK A100	grease for life
<b>11100A360</b>	300	60-75	250-312	2.300	10.000	HSK A100	grease for life
<b>11100A390</b>	322	55-61	571-1.186	721	6.000	HSK A100	air / oil
<b>11500A280</b>	322	106-113	1.098-1.546	932	6.000	ISO 50	air / oil
<b>11500A390</b>	322	120-126	1.121-1.578	1.030	8.000	ISO 50	air / oil
<b>11500A090</b>	352	60-67	764-871	750	6.000	ISO 50	air / oil

Other models size available on request



code 11063A550



code 11050A050

## E line

IMA TECNO **E Line** milling electro spindles has been developed in particular for application on **machining centres**, where the quality of machining required together with the cost of the electro spindle is a particularly appreciated feature.

some models

Code	Body Dimension	Power S1-S6	Torque S1-S6	Nominal Speed	Max Speed	Tool Interface	Lubrication
	mm	kW	Nm	rpm	rpm	type	type
<b>11050A050</b>	180x200	19-24	31-40	5.860	30.000	HSK A50	air / oil
<b>11063A950</b>	210	18-22	80-98	2.160	18.000	HSK A63	grease for life
<b>11063A820</b>	220	33-39	120-144	2.630	12.000	HSK A63	grease for life
<b>11400A170</b>	222	18,5-24	98-130	1.810	15.000	ISO 40	grease for life
<b>11063A760</b>	222	19-24	95-126	2.750	24.000	HSK A63	air / oil
<b>11400A110</b>	222	20-22	114-127	1.670	15.000	ISO 40	grease for life
<b>11063A550</b>	222	20-22	117-127	1.650	15.000	HSK A63	grease for life
<b>11063A860</b>	222	55-62	164-184	3.270	12.000	HSK A63	air / oil
<b>11100A400</b>	222	55-62	164-184	3.270	10.000	HSK A100	grease for life
<b>11400A220</b>	222	55-62	164-184	3.270	12.000	ISO 40	grease for life
<b>11500A410</b>	222	55-62	164-184	3.270	12.000	ISO 50	grease for life
<b>11063A1060</b>	222	65-70	117-164	5.400	24.000	HSK A63	air / oil
<b>11400A200</b>	250	30-38	151-193	1.900	12.000	ISO 40	grease for life

Other models size available on request

## DW line



code 11063A240

The search for careful and **high standardization** has allowed IMA TECNO to consolidate production of the **DW Line** model range.

This is particularly effective and reliable for machining operations where the required use is on 3 shifts/day and where a high number of tool changes is necessary.

some models

Code	Body Diameter	Power S1-S6	Torque S1-S6	Nominal Speed	Max Speed	Tool Interface	Lubrication
	mm	kW	Nm	rpm	rpm	type	type
<b>11063A400</b>	180	14,5-22	68-80	2.030	12.000	HSK A63	grease for life
<b>11063A070</b>	180	15-17,5	36-42	4.000	12.000	HSK A63	grease for life
<b>11063A240</b>	180	17-19	65-73	2.520	12.000	HSK A63	grease for life
<b>11063A1130</b>	180	17-19	65-73	2.520	15.000	HSK A63	grease for life
<b>11063A1140</b>	200	21-26	80-102	2.500	12.000	HSK A63	grease for life
<b>11400A190</b>	200	21-26	80-102	2.500	15.000	ISO 40	grease for life

Other models size available on request

## HORIZON line



code 11063A900

IMA TECNO electro spindles of the **HORIZON line** have been developed for particular use in the **automotive sector** where performance and reliability are essential conditions. These types of electro spindles are characterized by very high dynamics in terms of rotation and tool change.

some models

Code	Body Diameter	Power S1-S6	Torque S1-S6	Nominal Speed	Max Speed	Tool Interface	Lubrication
	mm	kW	Nm	rpm	rpm	type	type
<b>11400A140</b>	150	11-13	17-20	6.000	16.000	ISO 40	grease for life
<b>11063A900</b>	170	30-37	30-38	9.450	24.000	HSK A63	air / oil
<b>11063A910</b>	170	30-37	30-38	9.450	18.000	HSK A63	grease for life
<b>11063A930</b>	180	18-24	59-80	2.910	16.000	HSK A63	grease for life
<b>11063A700</b>	180	20-30	48-73	4.010	12.000	HSK A63	grease for life
<b>11063A610</b>	180	22-30	53-73	4.000	12.000	HSK A63	grease for life
<b>11063A1090</b>	220	25-30	34-41	7.000	16.000	HSK A63	grease for life
<b>11063A420</b>	260	27-33	89-102	2.900	15.000	HSK A63	air / oil
<b>11063A410</b>	262	19-22	165-195	1.100	15.000	HSK A63	grease for life

Other models size available on request





## MILLING/TURNING electro spindles



code 11063A770

End users' requirements to be able to complete the machining of the workpiece on the machine in a single set-up is largely satisfied by IMA TECNO solution, which offers electro spindles with a dual **milling/turning function**. This solution is obtained and guaranteed **by a mechanical clamping system of the axis** by means of toothed rings and this can be implemented on the whole range of milling electro spindles.

The milling-turning solution is represented below by a few types produced in many units.

some models

Code	Body Diameter	Power S1-S6	Torque S1-S6	Nominal Speed	Max Speed	Tool Interface	Lubrication
	mm	kW	Nm	rpm	rpm	type	type
<b>11063A770</b>	230	56-60	164-196	3.270	8.000	HSK A63	grease for life
<b>11500A100</b>	250	28-34	253-303	1.080	4.000	ISO 50	grease for life
<b>11100A240</b>	250	83-90	279-375	2.890	12.000	HSK A100	air / oil
<b>11500A020</b>	284	63-70	500-570	1.200	8.000	ISO 50	air / oil
<b>11100A150</b>	284	63-70	500-570	1.200	8.000	HSK A100	air / oil
<b>11500A250</b>	322	55-61	760-1.070	700	8.000	ISO 50	air / oil
<b>11022A080</b>	322	55-61	760-1.070	700	6.000	CAPTO C8	air / oil
<b>11022A060</b>	322	106-113	1.100-1.546	923	6.000	CAPTO C8	air / oil

Other models size available on request



Electrospindle ASA 8"



Electrospindle ASA 11"

## TURNING electro spindles & spindles

The high number of units produced with a complete range of electro spindles and spindles for turning machines, allows IMA TECNO to offer many solutions, taking into account few variables, such as:

- Chuck interface
- Type of driving
- Type of motor
- Supports for cylinders

### ELECTRO SPINDLES

some models

Code	ASA	Power S1-S6	Torque S1-S6	Nominal Speed	Max Speed	Hole Shaft	Lubrication
	inch	kW	Nm	rpm	rpm	mm	type
<b>11006A060</b>	6	14-16	105-168	1.300	6.000	68	grease for life
<b>11006A040</b>	6	27-34	195-250	1.300	6.000	72	grease for life
<b>11008A010</b>	8	24-37	285-370	910	3.000	45,5	grease for life
<b>11011A010</b>	11	27-34	172-216	1.500	6.000	50	grease for life
<b>11011A040</b>	11	34-40	216-259	1.500	5.000	50	grease for life
<b>11011A140</b>	11	47-56	430-510	1.050	3.200	50	grease for life
<b>11011A190</b>	11	76-90	556-660	1.314	3.000	75	grease for life
<b>11011A150</b>	11	63-80	430-546	1.400	3.500	50	hydrostatic

Other models size available on request

### SPINDLES

some models

Code	ASA	Torque S1	Max Speed	Hole Shaft	Lubrication
	inch	Nm	rpm	mm	type
<b>10005A010</b>	5	200	6.000	61	grease for life
<b>10006A020</b>	6	250	5.000	77	grease for life
<b>10008A050</b>	8	300	3.500	91	grease for life
<b>10011A200</b>	11	1.500	3.000	75	grease for life
<b>10015A130</b>	15	2.500	2.000	-	grease for life



Spindle ASA 15"

# MOTORIZATIONS



code 11900A320

IMA TECNO answer, to the need of machine tool manufacturers to simplify the mechanical solutions of the past, was the realization of the product motorization, used for the **transmission of motion in mechanical milling heads, speed changes, or directly applicable in the ram of the machine.**

The application of these motorizations allows clear advantages in particular in motion transmission with high power and torque in extremely small dimensions.

This represents a big advantage in terms of overall dimensions and consequent simplification of the machine layout.

some models

Code	Body Diameter	Power S1	Torque S1	Nominal Speed	Max Speed	Lubrication
	mm	kW	Nm	rpm	rpm	type
<b>11900A480</b>	240	40	250	1.520	8.000	grease for life
<b>11900A420</b>	260	30	503	573	6.000	grease for life
<b>11900A320</b>	260	52	422	1.187	8.000	grease for life
<b>11900A530</b>	260	100	412	2.375	6.000	grease for life
<b>11900A430</b>	262	65	404	1.562	6.000	grease for life
<b>11900A380</b>	262	98	409	2.384	6.000	grease for life
<b>11900A470</b>	265	34	621	524	6.000	grease for life
<b>11900A360</b>	300	60	400	1.460	8.000	grease for life
<b>11900A310</b>	300	76	537	1.368	6.000	grease for life
<b>11900A270</b>	300	82	653	1.200	4.500	grease for life
<b>11900A130</b>	322	62	751	804	4.500	grease for life
<b>11900A180</b>	340	75	1.688	430	2.400	grease for life
<b>11900A490</b>	350	64	1.020	603	6.000	grease for life
<b>11900A290</b>	350	80	585	1.300	4.500	grease for life
<b>11900A300</b>	350	115	810	1.306	4.500	grease for life
<b>11900A500</b>	403	215	3.230	635	2.500	grease for life

Other models size available on request



Product developed in partnership with  
**HSE** range with:

Max Speed: from 7.000 to 4.000 rpm

Nominal torque: from 1.250 to 5.000 Nm



Product developed in partnership with  
**HS** range with:

Max Speed: from 6.000 to 4.000 rpm

Nominal torque: from 5.500 to 16.000 Nm



# | RGB Ram Gear Box



ref. RGB 2000

With the product RGB, (Ram Gear Box) IMA TECNO has developed a flexible solution with important technological contents, that combines **high torque performance in small dimensions**.

Its application is dedicated to both **vertical and horizontal axis machine tools**.

The equipment made of an automatic attachment system for the accessories (heads-extensions) allows the machine to be used for multiple machining operations (turning, milling, drilling and grinding), allowing great flexibility.

Last but not least, the ease of assembly and maintenance on the machine with:

- Quick connections and couplings positioned at the top of the ram.
- Possibility of easy and quick extraction of the spindle from the front of the ram.

	Description - Data		RGB 1000	RGB 2000	RGB 3000	RGB 7000
SPINDLE MOTOR DATA	Body Diameter	mm	220	290	330	400
	Motor Power S1-S6 60%	kW	35-46	65-78	75-97	110-137
	Motor Torque S1-S6 60%	Nm	200-240	400-480	600-740	1.400-1.750
	Nominal Motor Speed	rpm	1.700	1.600	1.200	750
	Motor Cooling	type	Water + Glycol			
	Measuring System	type	by Encoder			
GEAR BOX DATA	Max Motor Speed	rpm	up to 10.000	up to 8.000	up to 6.000	up to 4.000
	Ratio G1	n	1:1	1:1	1:1	1:1
	Torque G1 S1	Nm	200	400	600	1400
	Nominal Speed G1	rpm	1.700	1.600	1.200	750
	Max Speed G1	rpm	up to 8.000	up to 6.000	up to 5.000	up to 3.500
	Ratio G2	n	1:5	1:5	1:5	1:5
	Torque G2 S1	Nm	1000	2.000	3.000	7.000
	Nominal Speed G2	rpm	340	320	240	150
SPINDLE DATA	Max Speed G2	rpm	1.600	1.200	1.000	700
	Tool Interface	type	ISO 50 - BT 50 - HSK A100			ISO 60 - BT 60 - HSK A160
	Bearings	type	Hybrid High Accuracy			
INTERFACE PLATE DATA	Bearings Lubrication	type	Grease for Life			
	Accessories Interface	type	Automatic Clamping / Unclamping System			
	Clamping Device	mm	HYDRODOCK			
	Plate Dimension	mm	up to 350 x 350	up to 450 x 450	up to 450 x 450	500 x 500
	Presence Monitoring	type	by Air			
	Identification	type	Baluff BIS C-306-01			
	Face Cleaning	type	by Compresses Air			

power  
**35>110**  
kW

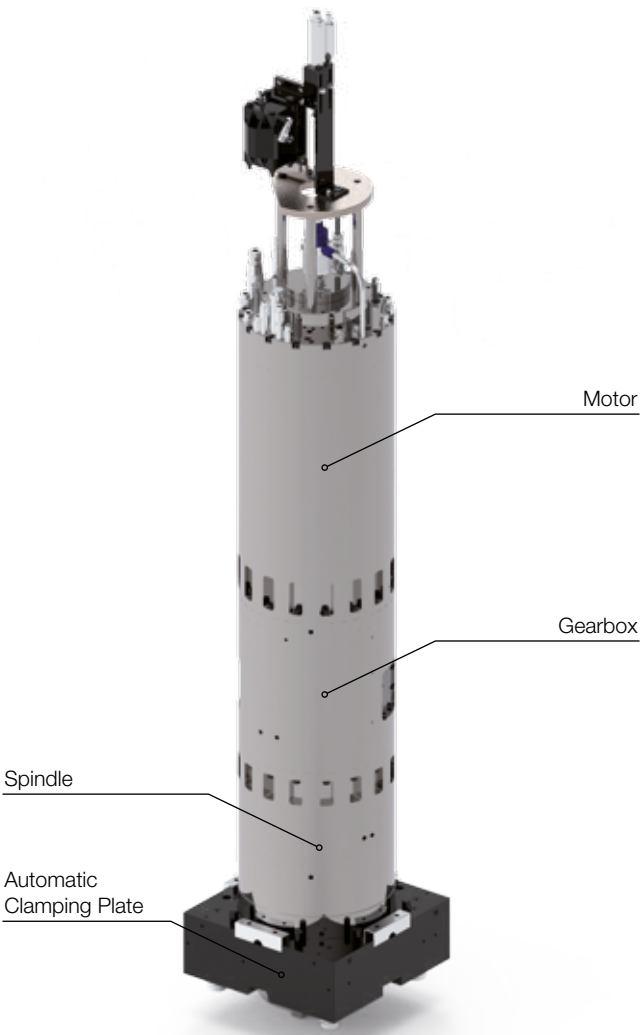
max torque  
**1000>7000**  
Nm

max speed  
**8000>3500**  
rpm

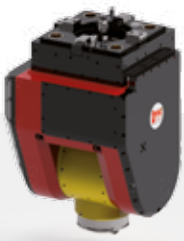
Motor  
gearbox  
spindle  
**4-size**

Shifting  
gearbox  
**i = 1**  
**i = 5**

Various  
**accessories**  
interface



Fork Head



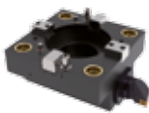
90° Extension Head



90° Head ATC



Turning Tool

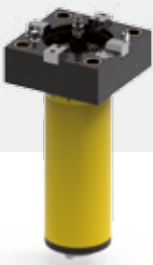


TOOLS ACCESSORIES

Grinding Head



Extension Head



Milling Tool



90° Head



90° Index Head







# HEADS with electro spindles

A wide experience acquired with the realization of different heads, with 1 and 2 continuous axes, allows IMA TECNO to be in the best position as supplier of such product, which is offered in 3 sizes:

- **Small** - particularly suitable for light machining (e.g. resins - aluminium)
- **Medium** - excellent compromise between high stock removal rates, high rigidity as well as high precision of movement
- **Large** - maximum stock removal capacity guaranteed by a strong construction.

The motion of the axes can be achieved through different solutions such as:

- Gear motor
- Torque motor
- Double pinion with back lash



ref. 19063A150



ref. 19063A070



ref. 19500A190

2 AXES HEAD	SMALL			MEDIUM			LARGE		
Travel Stroke Axis C - A	±45	±120	°	±270	±125	°	±275	+95 -105	
Axis Torque C - A	568	200	Nm	480	460	Nm	2.400	2.400	
Max Torque C - A			Nm	700	700	Nm	3.500	3.500	
Positioning	±7		"	±5		"	±5		
Repeatability	±4		"	±3		"	±3		
ELECTRO SPINDLE									
Power S1	30		kW	50		kW	35		
Torque S1	42		Nm	81		Nm	220		
Nominal Speed	6.800		rpm	5.900		rpm	1.520		
Max Speed	20.000		rpm	18.000		rpm	10.000		
Tool Inteface	HSK A63		type	HSK A63		type	ISO 50		
Lubrication	grease for life		type	grease for life		type	grease for life		

# | MECHANICAL HEADS

A wide range of mechanical heads can be the ideal solution for applications on gantry machines and vertical lathes directly on the machine ram.

IMA TECNO solutions are divided into:

- Angle heads either with continuous or indexed axis
- Fixed 90° angle heads
- Fork heads
- Extension heads either with straight or 90° axis output
- 45° universal heads

Tool change can be automatic or manual.

Working torque up to 2500 Nm.



some models

HEAD TYPE	FIXED	INDEX	FORK
Positioning or Stroke	fix	1° - 2,5°	±105° - 95°
Power (from machine)	(25-30) kW	(25-30) kW	(30) kW
Torque (S1)	1.000 Nm	1.200 Nm	800 Nm
Max Speed	3.000 rpm	3.000 rpm	3.000 rpm
Tool Change	automatic	automatic	automatic
Lubrication	grease for life	grease for life	grease for life



some models

HEAD TYPE	EXTENSION	90° EXTENSION	UNIVERSAL 45°
Positioning or Stroke	-	fixed	+180° -135°
Power (from machine)	(25-30) kW	(25-30) kW	(35) kW
Torque (S1)	1.000 Nm	1.000 Nm	1.500 Nm
Max Speed	2.000 rpm	3.000 rpm	3.000 rpm
Tool Change	manual	manual	automatic
Lubrication	grease for life	grease for life	grease for life



## GRINDING electro spindles for lathes



code 16000A290

Electro spindles are typically divided into electro spindles for internal and for external grinding.

IMA TECNO has chosen the solution that best corresponds to its recognized characteristic, namely solutions based on specific customer needs. This has allowed us to develop several applications that are basically divided into:

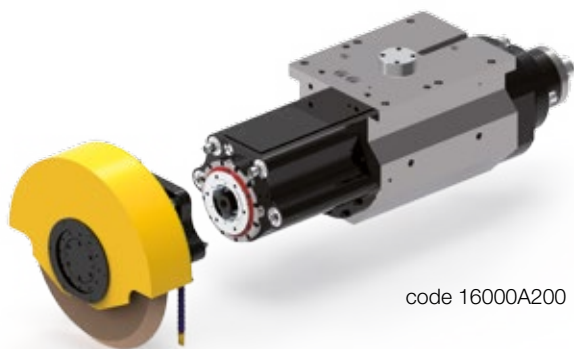
- **Grinding electro spindles generally applied on others than grinding machines.**
- **Grinding electro spindles for grinding machines.**

For both solutions many units have been delivered to important manufacturers in the field.

some models

Code	Body Dimension	Power S1	Torque S1	Max Speed	Wheel Interface	Wheel Diameter	Lubrication
	mm	kW	Nm	rpm	type	mm	type
<b>16000A290</b>	240/140	5	16	6.000	tapered	300	grease for life
<b>16000A270</b>	200	5	32	3.000	tapered	350	grease for life
<b>16000A170</b>	225	5	32	2.800	tapered	400	grease for life
<b>16000A230</b>	225	7,5	48	2.500	tapered	400	grease for life
<b>16000A190</b>	230	7,5	51	2.800	tapered	400	grease for life
<b>16000A180</b>	230	7,5	51	2.500	tapered	500	grease for life
<b>16000A100</b>	230	10	64	3.000	tapered	500	grease for life
<b>16000A250</b>	400x360	30	285	1.500	tapered	650	grease for life

Other models size available on request



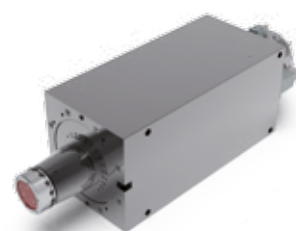
code 16000A200

## GRINDING electro spindles for grinding machines

### GRINDING electro spindles - AWC

some models

Code	Power S1	Torque S1	Max Speed	Wheel Interface	Lubrication
	kW	Nm	rpm	type	type
16063A440	9	34	6.000	HSK A63	grease for life
16063A050	12	20	8.000	HSK C63	grease for life
16063A060	15	30	10.000	HSK C63	grease for life
11100A110	15	102	3.000	HSK E100	grease for life
16063A030	17	65	12.000	HSK C63	grease for life
16063A070	18	16	16.000	HSK A63	grease for life
16000A070	22	300	3.000	tapered	grease for life
16000A200	25	96	6.000	HSK E100	grease for life



code 16000A070

### GRINDING electro spindles

some models

Code	Power S1	Torque S1	Max Speed	Wheel Interface	Lubrication
	kW	Nm	rpm	type	type
16000A280	1,5	1,5	10.000	tapered	grease for life
16000A300	2,5	20	3.000	tapered	grease for life
16000A060	12	39	6.000	tapered	grease for life
16045A010	15	36	12.000	tapered	grease for life
16000A130	17	65	12.000	tapered	grease for life
16000A210	24	56	12.000	tapered	grease for life
16000A310	36	330	3.000	cylindrical	grease for life



code 16000A210

### DRESSING electro spindles

some models

Code	Power S1	Torque S1	Max Speed	Wheel Interface	Lubrication
	kW	Nm	rpm	type	type
16000A260	0,3	0,3	10.000	cylindrical	grease for life
16000A040	0,9	1	10.000	cylindrical	grease for life
16040A010	1,6	1	15.000	cylindrical	grease for life
16000A050	1	4,8	10.000	cylindrical	grease for life



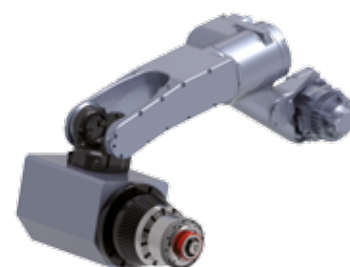
code 16000A040

Other models size available on request

## ELECTRO SPINDLES robot application

Code	Power S1-S6	Torque S1-S6	Max Speed	Tool Interface	Lubrication
	kW	Nm	rpm	type	type
<b>11040A040</b>	8-9,5	5-6	15.000	HSK A40	grease for life
<b>11063A070</b>	15-17,5	36-42	12.000	HSK A63	grease for life
<b>11063A240</b>	17-19	65-73	12.000	HSK A63	grease for life
<b>11063A540</b>	21-26	80-102	12.000	HSK A63	grease for life

Other models size available on request



code 11063A240

## TILTING UNIT with electro spindles for milling or milling/turning

1 AXIS HEAD	SMALL		BIG
Code	<b>19063A520</b>	type	<b>17000A010</b>
Travel Stroke Axis	±120	°	±120
Axis Torque	480	Nm	744
Max Torque	1.180	Nm	1.320
Positioning	±10	"	±8
Repeatability	±5	"	±4
ELECTRO SPINDLE			
Power S1-S6	24-28	kW	56-57
Torque S1-S6	37-44	Nm	306-421
Nominal Speed	6.200	rpm	1.800
Max Speed	24.000	rpm	6.000
Tool Interface	HSK A63	type	CAPTO C10
Lubrication	grease for life	type	grease for life

Other models size available on request



code 19063A520



code 17000A010  
milling/turning solution

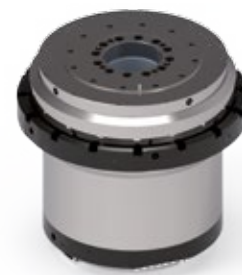
## TABLES High Torque and High Speed

Code	Power S1	Torque S1	Max Speed	Max Tables Ø
	kW	Nm	rpm	mm
<b>15000A070</b>	8	1.200	150	350
<b>15000A050</b>	63	4.000	1.200	1.000
<b>15000A060</b>	75	9.000	350	1.500
<b>15000A090</b>	63	15.000	400	1.500

Other models size available on request



code 15000A070



code 15000A090

## SCREW SUPPORT

IMA TECNO - SCREW SUPPORT designed and developed to give the machine manufacturer a ready-made unit, providing excellent stiffness and accuracy in ball screw applications.

**Complete range for ball screws - diameters 17-20-25-30-35-40-45-50 mm.**

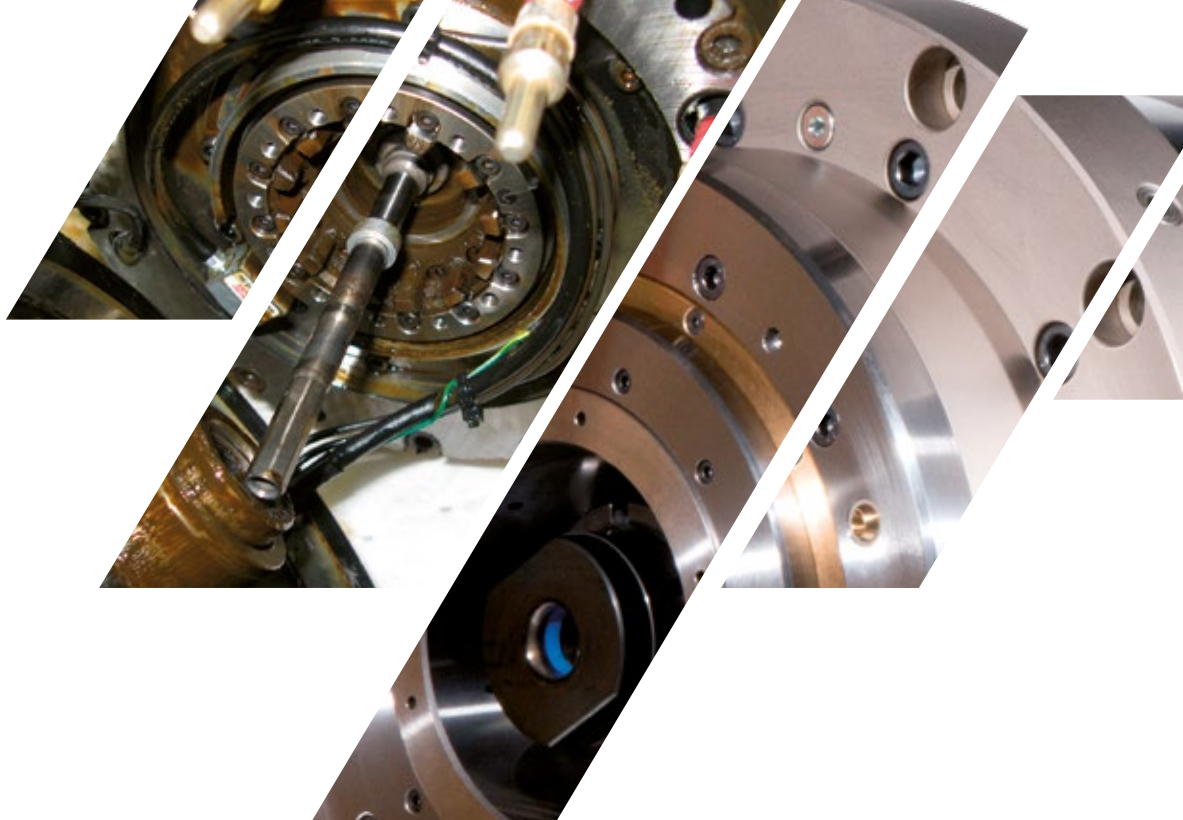
IMA TECNO design is interchangeable with the major products in the market.

High quality and corrosion protection of all material; bearings lubrication: grease for life.





# REPAIR SERVICE



**IMA TECNO, through its multi-brand repair centre, guarantees its customers a rapid repair service.**

## **FAST AND ACCURATE ANALYSIS**

After having examined, checked, disassembled and cleaned, the state of the components is evaluated in order to propose an optimal and guaranteed solution.

## **THE RIGHT PROPOSAL**

The solutions that IMA TECNO proposes after careful examination by its specialized technicians can be simple “basic” revision or more radical depending on the state of the product, in order to meet the performance and quality you need.

## **RESTORING**

In the repair or reconstruction of its own product, as well as that of another manufacturer, IMA TECNO makes available all the technical knowledge used for the realization of new products, with selection and control of rebuilt components and with the use of original spare parts.

## **COMPONENTS**

In order to optimize delivery times, which, we know very well, are always very restricted, we make use of a timely planning of the parts to be rebuilt and we draw from our bearings warehouse that is constantly monitored and supplied.

## **ASSEMBLY**

The overhaul activity uses independent workstations that favor precision assemblies; this is constantly monitored at high efficiency operating levels.

## **CONTROL AND TESTING**

In order to maintain high quality standards, the same control and testing procedures as for the new product are fully applied to the overhauled products. A document certifying the checks carried out and the relative values obtained is delivered to our Customer together with the product.



IMA TECNO S.R.L.

HEADQUARTERS

VIA DELLE INDUSTRIE N.°1

WAREHOUSE

VIA DELL' ARTIGIANATO N.°4

20851 LISSONE (MB) - ITALY

+39 039 2454524