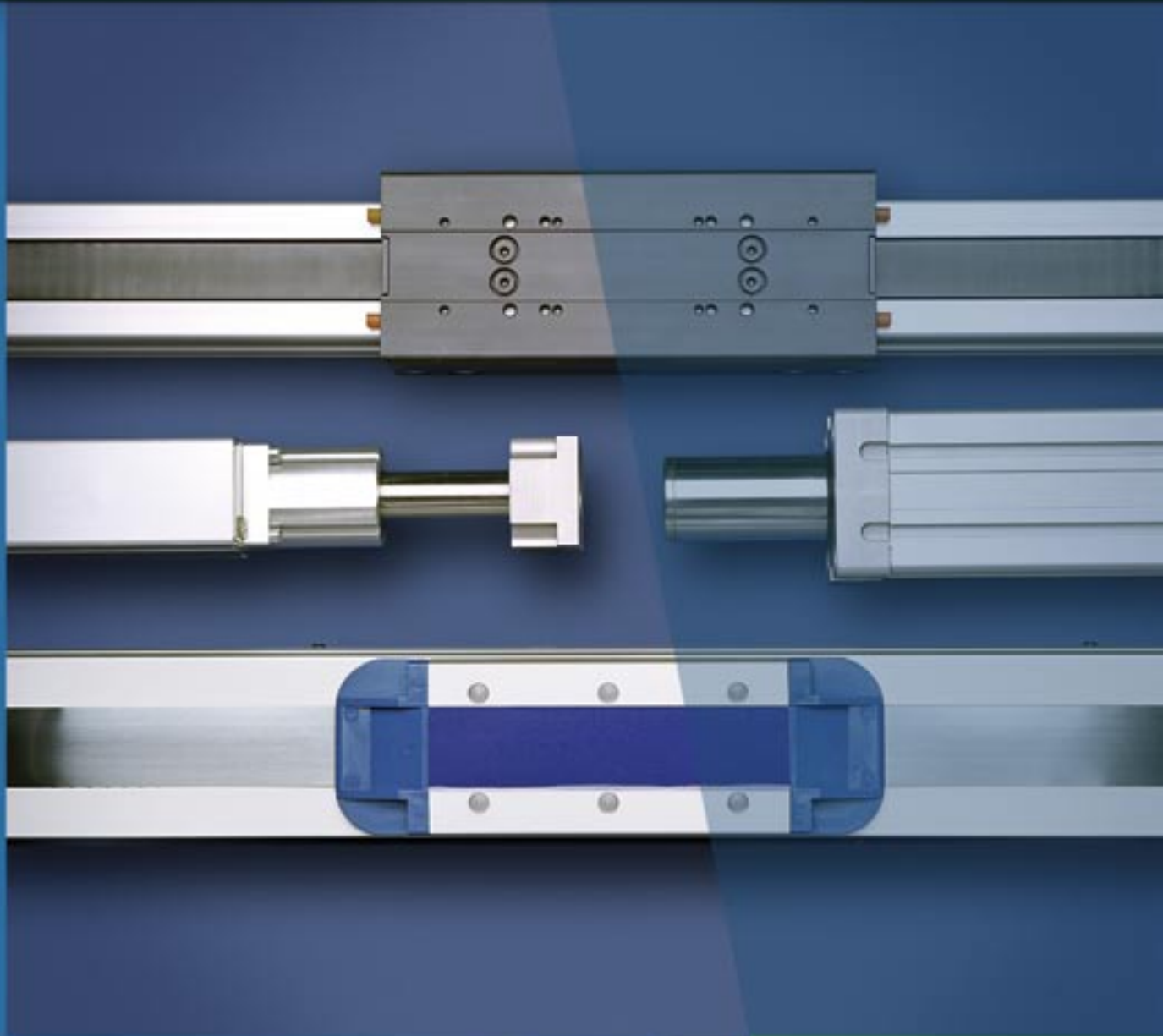


# LINEAR UNITS

[www.DanaherMotion.com](http://www.DanaherMotion.com)



**THOMSON NEFF™**

**THOMSON TOLLO™**

**DANAHER**  
MOTION

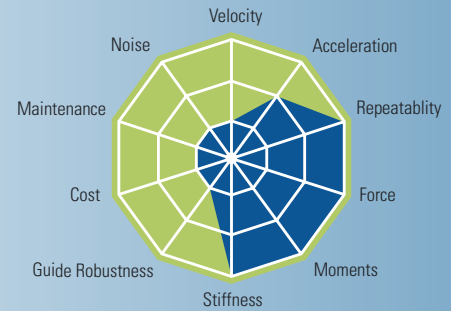
Solutions by

# Product Overview

## Ball Screw Driven and Ball Guided Units

Units designed for high thrust, payload, high precision and stiffness.

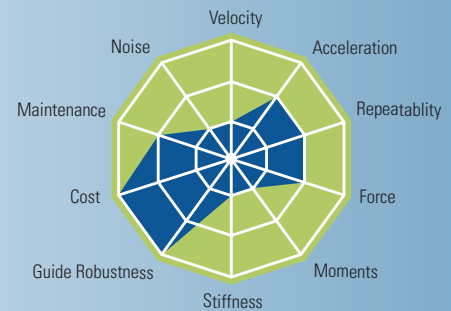
- Force up to 12000 N
- Repeatability down to 0,005mm



## Ball Screw Driven and Slide Guided Units

Designed for low cost, high thrust operations in demanding environments.

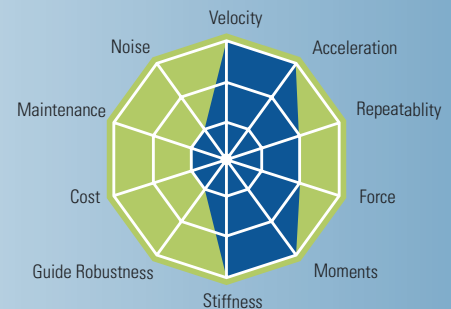
- Cost efficient unit
- Durable guide system
- Washdown protected versions



## Belt Driven and Ball Guided Units

Smooth running units for dynamic applications with high speed, high acceleration and high loads requiring a long lifetime.

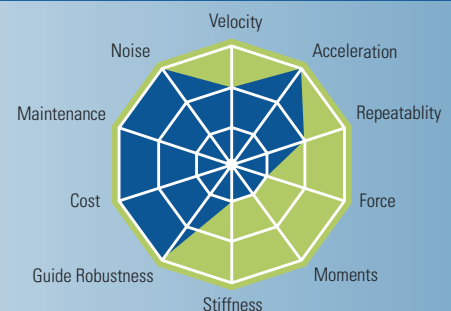
- Speed up to 5 m/s
- Acceleration up to 40 m/s<sup>2</sup>



## Belt Driven and Slide Guided Units

Units for dynamic applications requiring high speed, high acceleration, low maintenance and smooth travel.

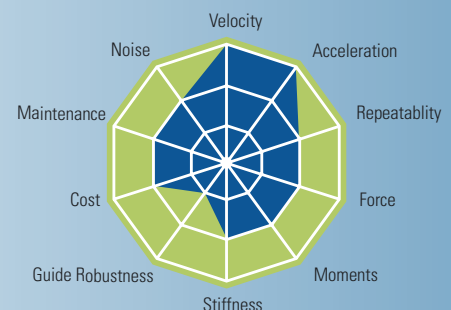
- Cost efficient guide system
- Chemically protected versions



## Belt Driven and Wheel Guided Units

Units for dynamic applications with high speed, high acceleration, smooth motion and medium to high loads.

- Speed up to 10 m/s
- Acceleration up to 40 m/s<sup>2</sup>



## Linear Lifting Units

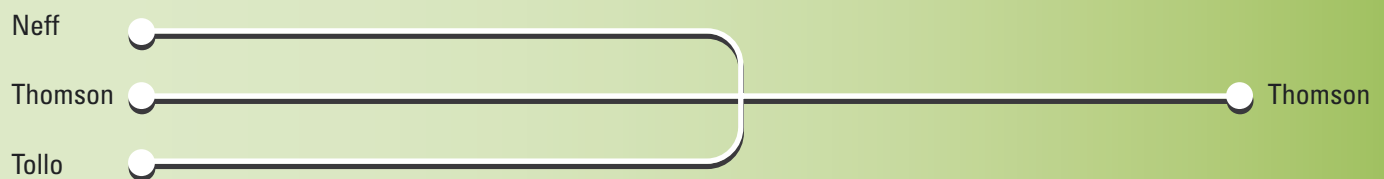
Units for lifting applications. Often used in X-Y configurations in combination with other linear units.

## Linear Rod Units

Units designed for lifting applications or for the replacement of hydraulic and pneumatic cylinders.

# The History of Linear Units is the History of Us

Danaher Motions linear product offering consists of products from world known brands such as Thomson, Neff and Tollo. These three companies have been a part of the linear unit development elite for decades and are now forming one group of products offered to the market under the brand name Thomson. Regardless of your application you can be sure that Danaher Motion can offer you a product to match your linear motion needs.



Neff was founded in 1905 offering products for the linear motion market and over the decades Neff has become a market leader the ball screw technology. The first linear unit from Neff was presented in 1981 at the FAMETA show in Stuttgart.

Thomson dates back to the 1940s when the first ball bushing bearing in the world was presented to the market. The product portfolio expanded and in the 1980s Thomson built their first complete linear unit.

Tollo was founded in 1981 and started as a lifting equipment manufacturer, the product portfolio grew rapidly and in 1982 Tollo presented their first linear unit at the Technical Fair in Stockholm.





Danaher Motion has now selected the most competitive products from each brand resulting in a state of the art product range. The product range covers the smallest and most compact linear units to the biggest and most robust. With a wide range of guide systems that have the ability to work in harsh environments, at high speeds or in high precision systems combined with the best ball screw and belt drive technologies available ensure that Danaher Motion can match your linear motion needs.



# Performance Overview

		Ball Screw, Ball Guides	Ball Screw, Slide Guides	Belt Drive, Ball Guides	
					
<b>Profile Size</b>					
Smallest unit	[mm]	50 × 18,6	40 × 37	40 × 40	
Largest unit	[mm]	240 × 85	108 × 100	240 × 85	
<b>Stroke</b>					
Maximum stroke	[mm]	11000	6000	12000	
<b>Speed</b>					
Maximum speed	[m/s]	2,5	1,25	5	
Maximum acceleration	[m/s²]	20	20	40	
<b>Accuracy</b>					
Maximum repeatability	[±mm]	0,005	0,05	0,05	
<b>Load</b>					
Maximum load, Fx	[N]	12000	5000	5000	
Maximum load, Fy	[N]	15000	3005	6400	
Maximum load, Fz	[N]	30000	3005	6400	
Maximum load torque, Mx	[Nm]	1900	117	600	
Maximum load torque, My	[Nm]	2450	279	720	
Maximum load torque, Mz	[Nm]	950	279	720	
<b>Features</b>					
Units with double carriages		●	●	●	
Units with left/right carriages		●	●		
Telescoping units					
Undriven units		●	●	●	
Units with cover band		●	●	●	
Wash down protected units			●	●	
Chemically protected units					
<b>Accessories</b>					
Mounting kits		●	●	●	
Gear boxes		●	●	●	
Servo motors		●	●	●	
Limit switch / sensor brackets		● / ●	● / ●	● / ●	
Feedback devices / brackets		● / ●	/ ●	● / ●	

# Performance Overview

	Belt Drive, Slide Guides	Belt Drive, Wheel Guides	Linear Lifting Units	Linear Rod Units
				
	50 × 50	50 × 50	50 × 50	60 × 60
	108 × 100	240 × 85	188 × 150	130 × 130
	12000	11000	3000	2000
	5	10	10	2
	40	40	40	20
	0,2	0,05	0,05	0,05
	1250	5000	2000	40000
	3005	5000	2000	800
	3005	9300	7500	800
	117	500	2000	300
	279	930	2000	300
	279	500	330	—
	●	●	●	
			●	●
	●	●		
	●	●		
	●			●
	●			●
	●	●	●	●
	●	●	●	●
	●	●	●	●
	● / ●	● / ●	● / ●	/ ●
	/ ●	● / ●	● / ●	

# Thomson Linear Unit Features

Thomson Neff and Thomson Tollo linear units are available in the five main categories offering you as a customer an unmatched product range to select from. With almost 50 models available plus a broad range of accessories this makes Thomson the only linear unit partner you need.

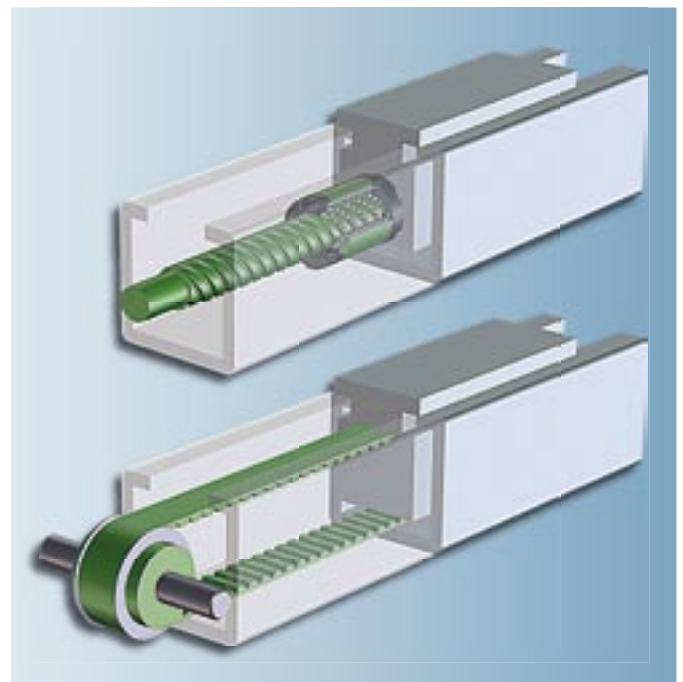
- screw driven units with ball guides for high loads and high precision
- screw driven units with prism guides for medium to high load and durable guide system
- belt driven units with ball guides for high load and dynamics
- belt driven units with wheel guides for applications requiring extreme speed and acceleration
- belt driven units with prism guide for low cost and durable guide system.

## Screw or belt drive

Thomson linear units can be driven by either a screw system or a tooth belt system. We use a broad variety of screw and belt types to meet the specification for all possible applications.

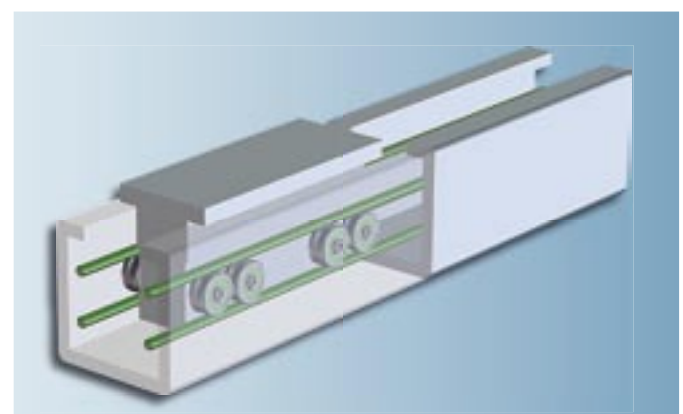
A screw driven system is normally recognised by high thrust and stiffness and can be based on a low cost lead screw with preloaded nut, through to a standard commercial rolled ball screw or even a state of the art high precision ground ball screw.

A belt driven system is chosen when acceleration and speed are the most important criteria. Our belt driven units use a wide range of different belts from leading belt manufacturers.



## Fast wheel guides

A wheel guided system offers a perfect combination of stiffness and dynamics. With high load capacity and unmatched speed and acceleration, wheel guides is the perfect choice for a dynamic application. Years of experience ensure that you get the best in class technology when choosing a Thomson wheel guided linear unit.





## Thomson Linear Unit Features

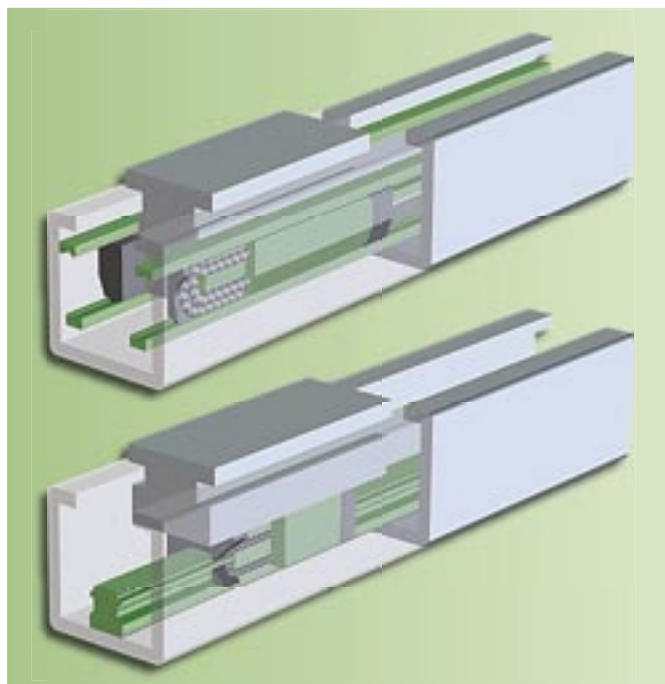
Thomson can offer 24 different ball guided models to choose from. Regardless if your application is in the medical, semiconductor or machining industry we have the product to meet your demands. For handling and packaging the best choice normally is the wheel guided or prism guided units offering outstanding performance and cost performance ratio. Wheel guided systems are recognised for high load capacity, unmatched acceleration and speed while prism guided units are known for their robustness and durability. Prism guided units are also available in washdown and chemically protected versions withstanding the harsh environments in food factories, paper mills and in chemical plants.

### High precision ball guides

Thomson ball guided linear units come in two different versions.

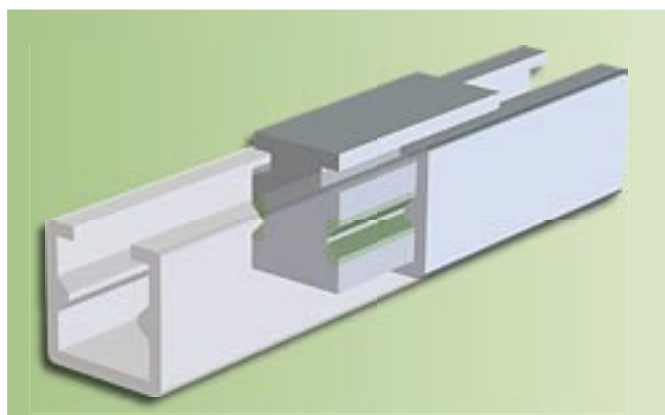
The first ball guide version has a unique ball guide developed by Thomson. This integrated ball guide system is used in some of the ball guided units and offers outstanding load carrying performance along with high accuracy and a long life expectancy.

The second version are based on a commercial type of ball guide which offers smooth and quiet travel and the highest precision. These ball guided systems offer the best performance on the ball guide market today.



### Robust prism guides

The unique self aligning prism guide system uses prism shaped polymer bushings running directly on the anodised profile surface. The prism guides offers a cost efficient, smooth, reliable and maintenance free guiding system. Resistant to shock loads, dust and dirt it is the best choice for applications in demanding environments.



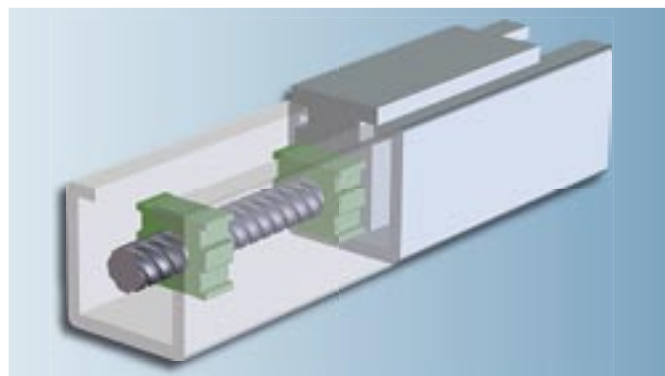
# Thomson Linear Unit Features

The Thomson linear unit products range from very small linear units to the largest ones available. Profile sizes range from as small as 25 mm up to profiles with 130 mm in height and up to almost 240 mm in width. We can offer linear units with stroke lengths from only a few hundred millimetres up to as much as 12 metres as standard.

- all units based on anodised corrosion resistant aluminium profiles
- units with left and right moving carriages available
- play free screw driven units available
- linear units with single or double carriages available.

## Patented screw support technology

All screw driven units can be delivered with screw supports to ensure high speed at long strokes. Some screw supported units have a unique patented screw support system which offers you full speed up to strokes of 11 metres. At the same time it adds on less length to the unit than other screw support systems on the market due to its outstanding stroke to total length of the unit ratio.



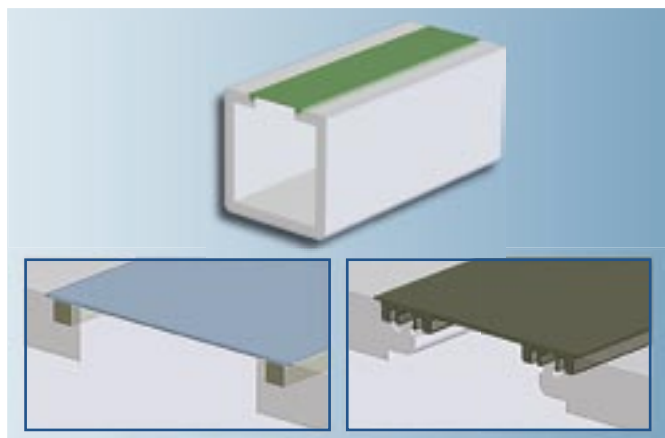
## Long stroke

With strokes up to 12 meters for belt driven units and up to 11 meters for screw driven units Thomson offer the longest strokes on the market.



## Unique cover band technologies

Sealing the units from water, dust and other contamination is essential for a long and trouble free life. Thomson can offer two best in class sealing technologies. Either a stainless cover band kept in place with magnet strips or a plastic cover band that is self-locking to the aluminium profile. Another unique feature is the cover band stretching function eliminating any cover band slack thus increasing the life of the cover band.





## Thomson Linear Unit Features

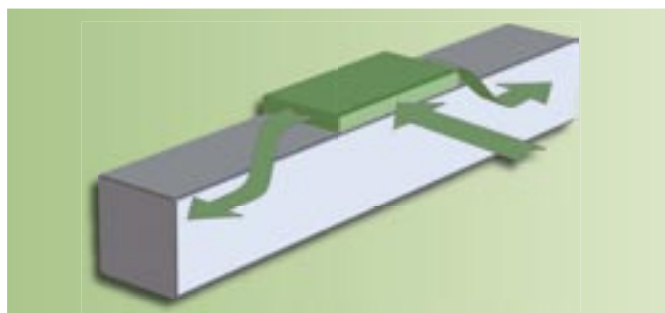
Thomson offers an unmatched selection of accessories of gearboxes, sensors, feedback devices and fixation parts for easy assembly of the linear units to any machine or application.

We also offer predefined motor and drive packages and accessories for multi axis applications making it possible to create complete automation, handling and robotic systems.

- modern design means fast and easy installation
- little or no maintenance required
- high quality and modern production ensures long and reliable life.

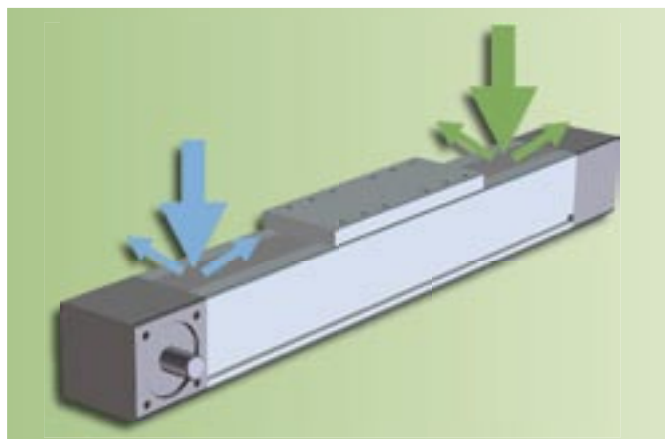
### Central lubrication

For demanding applications in high performance machinery easy and fast maintenance is a must. By choosing a unit with central lubrication the lubrication is applied at one point ensuring that guides as well as the drive screw is lubricated and kept intact through out the lifetime of the unit.



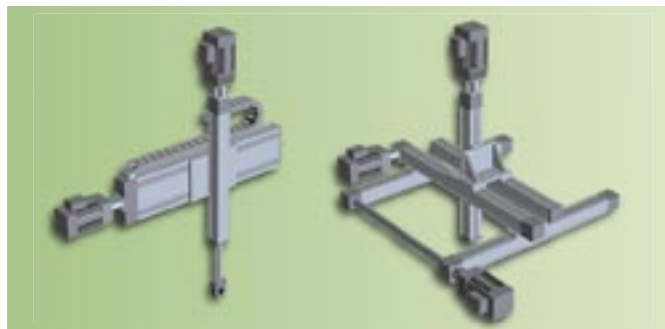
### Stainless units

There are two types of stainless units, washdown or chemically protected. Washdown protected units are screw or belt driven prism guided units upgraded so that they can operate in wet and humid environments such as food, dairy and slaughter plants. Chemically protected units are belt driven prism guided units that are further upgraded to tolerate basic and acid liquids making them suitable for paper mills, galvanising plants and the chemical industry in general.



### Packages and multi axis solutions

By combining the unique linear units from Thomson and utilizing the predefined mounting components it is easy to create multi axis systems. Combining this with our range of Kollmorgen servo motors, servo drives and motion controllers ensures a state of the art motion system.



# Applications

Linear Units are the solution in many types of manual and automatic equipment. The large range of models and sizes makes it easy to find the perfect linear unit for your needs.

- state of the art technology
- easy to use sizing & selection software
- free to use 3D CAD blocks available
- world wide sales, support and service
- large network of system houses and integrators
- one of the largest linear unit suppliers in the world.

## General automation



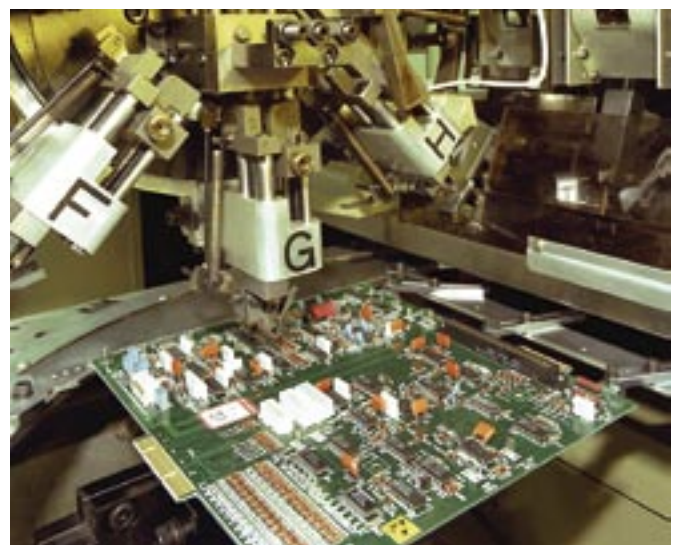
Combining Thomson linear products enables you to solve any automation application. Our products are well known among Europe's car manufacturer and system houses.

## Machining



By selecting our high performance screw driven and ball guided products most of the machining movements can be made easier and more cost efficient. Combining with servomotors, gearboxes and drives we are able to offer you

## Assembly



High precision screw system and ball guide system enables you to solve high precision pick and place applications as well as soldering and inspection tasks.

# Applications

Thomson has over 100 years of linear motion experience and our application engineers are never further away than a phone call. Contact us today to learn more about how we can help you making linear motion easy.

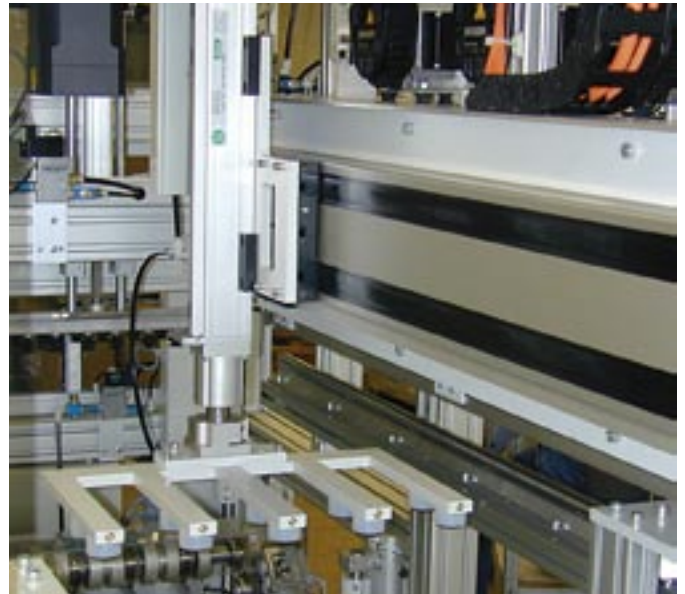
- large range of accessories
- multi axis kits
- customised units
- ISO 9001 certified production
- short delivery times.

## Packaging and palletizing



Our wheel guided and prism guided linear units are directly developed to suit the needs for the packaging, printing and scanning industry. The food, beverage and paper industries are since long our customers.

## Robotics



Combining our wide range of linear units and lifting units and using Danaher Motion gearboxes, motors and drive technologies enables you to create many different types of robotic system for advanced applications.

## Materials handling



Combining Thomson overhead rail products with the linear lifting units enables you to solve any material handling application. We offer predefined lifting units but you can combine any of our products to suit your needs.





\* DANAHER MOTION is a trademark.

Technical changes which improve the performance of the equipment may be made without prior notice! Printed in Germany.

© 2005 Danaher Motion EU200502-02 TJ

---

FOR IMMEDIATE ASSISTANCE:

Internet: [www.DanaherMotion.com](http://www.DanaherMotion.com)

United Kingdom: Danaher Motion  
Chartmoor Road, Chartwell Business Park  
Leighton Buzzard  
Bedfordshire, LU7 4WG  
Phone: +44 (0) 1525 243 243  
Fax: +44 (0) 1271 334 502  
E-mail: [LMSEurope@danahermotion.com](mailto:LMSEurope@danahermotion.com)

France: Danaher Motion  
C.P 80018  
12, Rue Antoine Becquerel – Z.I. Sud  
F – 72026 Le Mans Cedex 2  
Phone: +33 (0) 243 50 03 30  
Fax: +33 (0) 243 50 03 39  
E-mail: [sales.france@tollo.com](mailto:sales.france@tollo.com)

Germany: Danaher Motion GmbH  
Postfach 1153  
D-72645 Wolfschlügen  
Phone: +49 (0) 7022 504-0  
Fax: +49 (0) 7022 541 68  
E-mail: [helpdesk@tollo.com](mailto:helpdesk@tollo.com)

Italy: Danaher Motion srl  
Via Brughetti  
I - 20030 Bovisio Masciago  
Phone: +39 (0) 362 594260  
Fax: +39 (0) 362 594263  
E-mail: [info@danahermotion.it](mailto:info@danahermotion.it)

Sweden: Danaher Motion  
Box 9053  
SE-29109 Kristianstad  
Phone: +46 (0)44 24 67 00  
Fax: +46 (0)44 24 40 85  
Email: [helpdesk@tollo.com](mailto:helpdesk@tollo.com)

Switzerland: Danaher Motion  
Rue Jardinière 157  
Case postale  
CH-2301 La Chaux-de-Fonds  
Phone: +41 (0) 32 925 61 11  
Fax: +41 (0) 32 925 65 96  
Email: [info@portescap.com](mailto:info@portescap.com)

---