

TECHNICAL SPECIFICATIONS

- Three-phase squirrel cage asynchronous motors
- Forced air ventilated, frame IP44/IC 06
- Class H Insulation with Kapton® formed coil windings
- Two 100Ω Platinum RTD per phase
- Anti-condensing tape heater
- Terminal box designed to be top front with cable gland bottom entry
- High corrosion protection:
 - » internal anti-rust coating and external epoxy paint coating (minimum thickness 150µm);
 - » stainless steel nameplate; anticorrosion fasteners
- Standard motors equipped with radial deep groove open ball bearings
- Low friction dust seals
- Motor equipped with an over-sized upper radial deep groove open ball insulated bearing
- lower bearing high radial load capacity cylindrical roller bearing
- Labyrinth and IP56 isolator seals to maximize protection against contaminant incursion and bearing damage
- Bearing re-lubrication at prescribed intervals with FAG* Arcanol* “TEMP-110” grease
- Rated for bearing longevity
- Low maintenance requirements
- Double ended shafts
- Three phase, variable speed
- 560V, 39.2 Hz
- Pole 4
- Forced air ventilated

	Rated Speed	Constant Torque	Constant Horsepower
Volts (AC)	560	560	560
Max. Current (Amp)	548	585	548
Output Power, HP (kW)	600 (440)	600 (440)	600 (440)
Speed (RPM)	1164	0-1164	1164-2420
Frequency (Hz)	39.18	0-39.18	39.18-81.50
Torque, Lb-Ft (Nm)	2706 (3669)	2706 (3669)	2706-1301 (3669-1764)

400HP and 800HP also available upon request.

CERTIFICATIONS

- AC VFD Duty, Cast End frames malleable iron
- To norms IEC 60079-0, -7, -15
- ATEX, IECEx, NEC/CEC Certified II 3 G Ex ec IIC T3 Gc -40C to +55C
- Ex ec IIC T3 Gc -40C to+55C
- Class I Zone 2 AEx ec IIC T3 Gc -40C to +55C
- Passed NEMA MG 1-2016 Sealed Windings water spray test (sec. 20.18)
- Motor is allow to used in area with any Variable Frequency Drivers (VFD)

* FAG and Arcanol are believed to be the trademarks or trade names of Schaeffler Technologies, GmbH & Co. and are not owned or controlled by Regal Beloit Corporation.



Cemp S.r.l.
Via Piemonte, 16
20030 Senago (Milan) - Italy
Phone: +39 02 94435401
Fax: +39 02 9989177

www.RegalBeloit.com

APPLICATION CONSIDERATIONS
The proper selection and application of power transmission products and components, including the related area of product safety, is the responsibility of the customer. Operating and performance requirements and potential associated issues will vary appreciably depending upon the use and application of such products and components. The scope of the technical and application information included in this publication is necessarily limited. Unusual operating environments and conditions, lubrication requirements, loading supports, and other factors can materially affect the application and operating results of the products and components and the customer should carefully review its requirements. Any technical advice or review furnished by Regal Beloit America, Inc. and/or its affiliates ("Regal") with respect to the use of products and components is given in good faith and without charge, and Regal assumes no obligation or liability for the advice given, or results obtained, all such advice and review being given and accepted at customer's risk. For a copy of our Standard Terms and Conditions of Sale, please visit <http://www.regalbeloit.com> (please see link at bottom of page to "Standard Terms and Conditions of Sale"). These terms and conditions of sale, disclaimers and limitations of liability apply to any person who may buy, acquire or use a Regal product referred to herein, including any person who buys from a licensed distributor of these branded products.
Regal and Cemp are trademarks of Regal Beloit Corporation or one of its affiliated companies.
©2017 Regal Beloit Corporation, All Rights Reserved. MCB17061E • Form# 10196

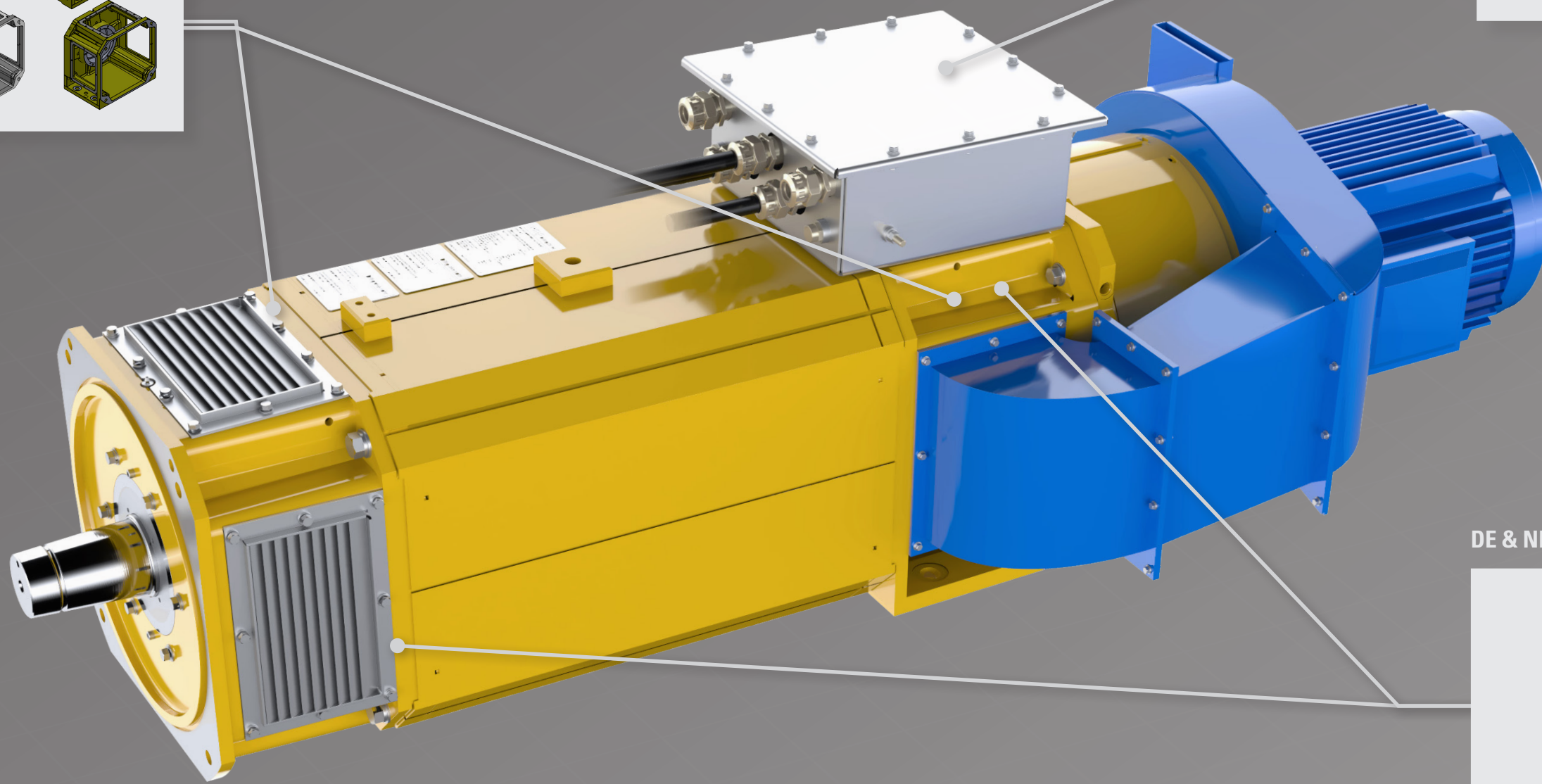
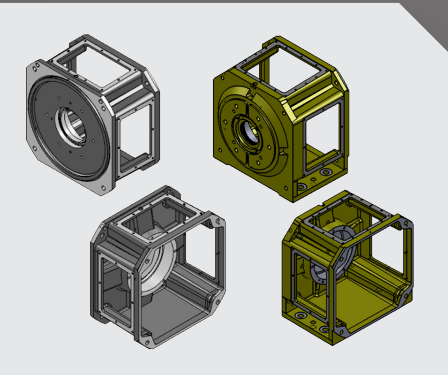


600HP TOP-DRIVE
DRILLING MOTOR
ATEX - IECEx – NEC/CEC

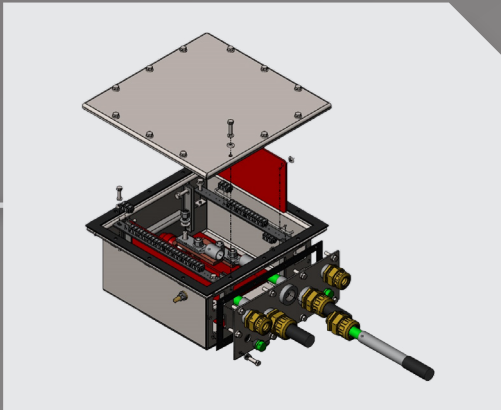


MAIN FEATURES

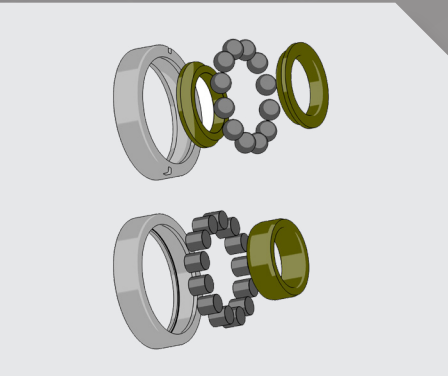
DE & NDE CAST IRON END FRAMES



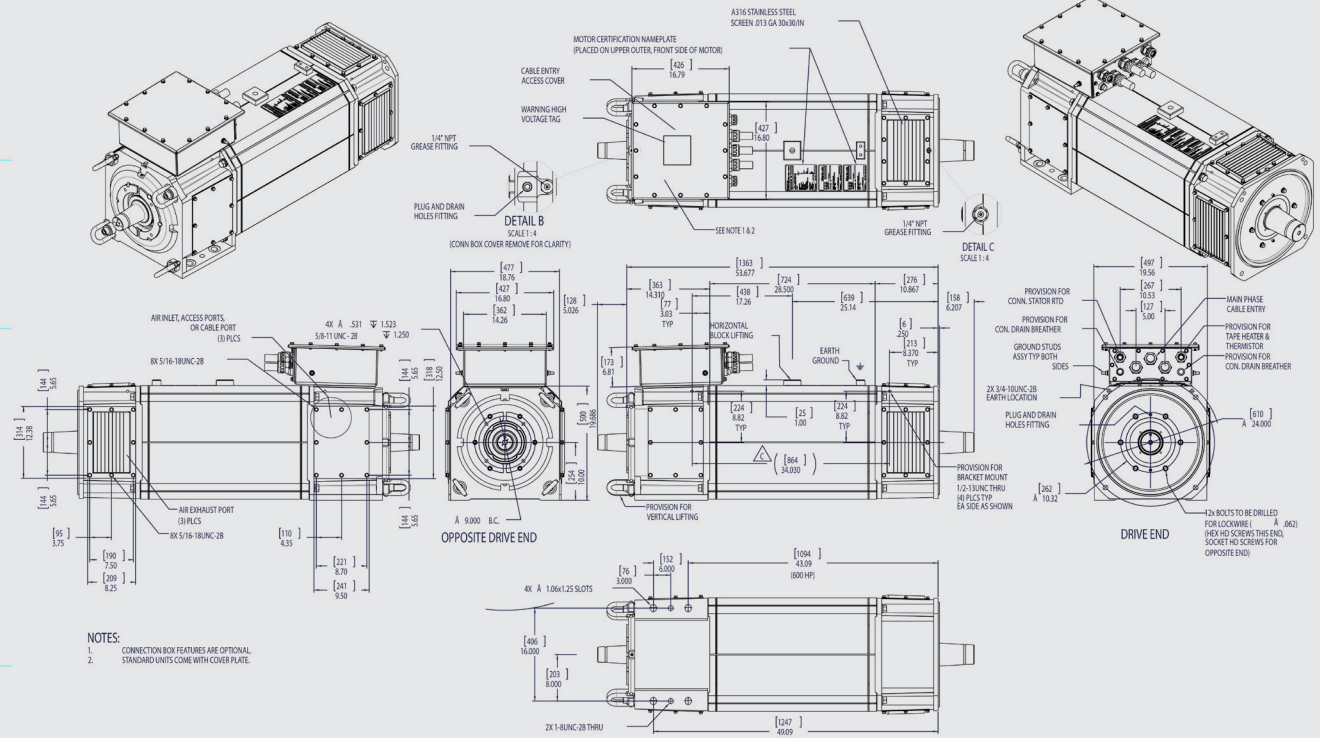
SMART TERMINAL BOX



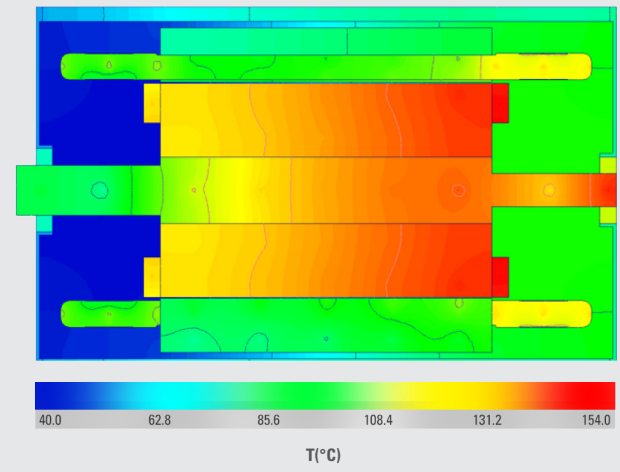
DE & NDE BEARINGS



600 HP TOP-DRIVE MOTOR DRAWING



THERMAL STUDY



OPPORTUNITY TO INCREASE SAFETY...BY INCREASED SAFETY "E"

FROM EPL Gc TO EPL Gb

FROM PROTECTED DURING NORMAL OPERATION ONLY
TO PROTECTED ALSO DURING STARTING OR PREDICTABLE FAILURE

FROM II 3G Ex ec IIC T3 Gc TO II 2G Ex eb IIC T3 Gb
FROM Class I, Zone 2 Ex ec IIC T3 Gc TO Class I, Zone 1 Ex eb IIC T3 Gb
FROM Ex ec IIC T3 Gc TO Ex eb IIC T3 Gb

IEC 60079-7
INTERNATIONAL STANDARD
Edition 5.2 2019-06

CEMP® 600 HP CONTINUOUS DUTY MOTOR PERFORMANCE CURVE
MINIMUM MOTOR L-L VOLTAGE: 560 VOLTS

