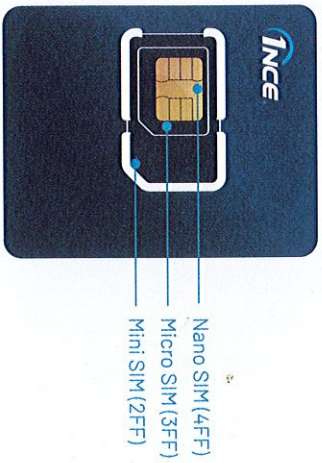
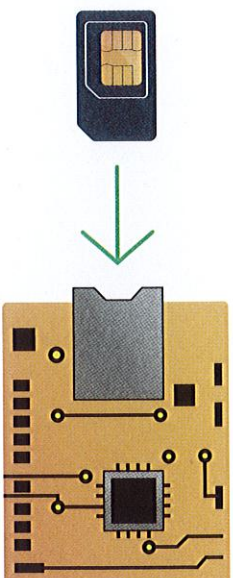


## Step 1 Insert your SIM card

Choose your FlexSIM card format: 2FF, 3FF or 4FF.



Insert the SIM card into your device.

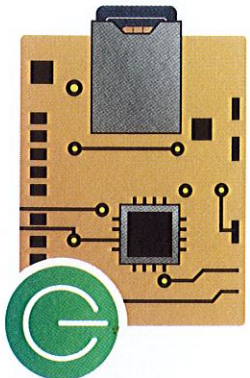


More at [help.ince.com/dev-hub/docs/sim-cards-knowledge](http://help.ince.com/dev-hub/docs/sim-cards-knowledge)



## Step 2 Setup your connection

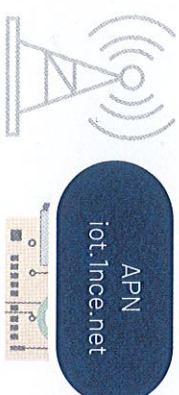
Switch on your device.



The SIM automatically connects to the next available network.



Set the APN `iot.lnce.net` to establish a data connection.



Please make sure to use the latest firmware version on your device.

More at [help.lnce.com/dev-hub/docs/data-services-apn](http://help.lnce.com/dev-hub/docs/data-services-apn)



### Step 3 Login to the Customer Portal

Go to [portal.ince.com](https://portal.ince.com) for configuration options (see over).

Login with the e-mail address you used when ordering your SIM and the password you have set.

<https://portal.ince.com>



E-Mail	Password
<input type="text" value="john@johndoe.com"/>	<input type="password" value="*****"/>
<a href="#">Forgot password?</a>	

Login

After placing your order, you have received an e-mail that asks you to set up your portal login. Please check your mails.

Login via [portal.ince.com](https://portal.ince.com) and

Login

button or directly via [portal.ince.com](https://portal.ince.com)



## In the 1NCE Customer Portal, configure your account and user



Manage new and existing **Users** of the Customer Portal like Owner, Admin, User, API.



Set **monthly limits** for your data and SMS usage.



Configure **SMS Forwarding** to forward mobile originated SMS towards a configurable IP/URL.



Secure your SIM with an **IMEI lock** so that the SIM can only be used with one specific device.



Administer **Organisations** to assign SIM cards between different sub-orgs.



Implement an **Open VPN** for a secure tunnel between the 1NCE network and your own environment.



Find all details in the 1NCE Documentation at [help.1nce.com](http://help.1nce.com)



## data, IoT connectivity and SIM cards



Use the **Connectivity Suite** for easy IoT device management via AWS IoT Core.



Manage your **Account** details like customer and user data as well as billing and shipping address.



View your SIM **Orders** and download your invoices at any time.



Configure **Data Streams** to receive real-time event data about your SIMs.



Integrate the SIM management into your own solution by using our **REST API**.



Contact our Customer **Support** on +49 180 5 00 95 98 \* or by service request for any technical or administrative questions.

\* Available from Monday to Friday from 9am to 6pm.

0 710535 031300



lccID: 898822806603269931

CE  1NCE GmbH  
Sternengasse 14-16  
D-50676 Cologne



1NCE GmbH, Sternengasse 14-16, 50676 Cologne, Germany

## DELIVERY NOTE

### R.E.M. SRL

Carlo Spaziani  
Via Ferruccia, 16/A  
03010 PATRICA (FR)

CUSTOMER SERVICE +49(0) 1805 00 95 98

MANY THANKS FOR YOUR ORDER - We have sent you the following:

DELIVERY NOTE NO.: A1024113

CUSTOMER NO.: 81029663

DATE: 28.10.2022

CUSTOMER REF.: Martina Rossi

POS.	PRODUCT NAME	DELIVERY
1	1NCE IoT FlexSIM BS5	5
TOTAL		5



1NCE GmbH  
Sternengasse 14-16  
50676 Cologne, Germany



Managing Directors:  
Alexander P. Sator, Younes Allaki,  
Ivo Rook



Reg. Court: Local Court of Cologne  
Reg. No.: HRB 92529  
VAT Reg. No.: DE 315 149 474



E-Mail: [info@1nce.com](mailto:info@1nce.com)  
[www.1nce.com](http://www.1nce.com)