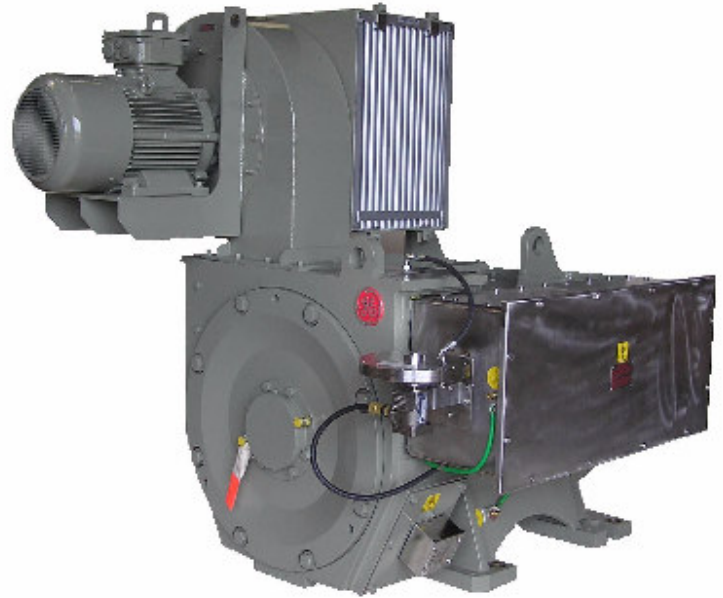


GE

GEB22

1150 Hp

AC drilling motor



Performance ratings

The GEB22 AC drilling motor with 3000 SCFM airflow and temperature rise of 110°C at 45°C ambient.

	Continuous Rating	Drawworks Duty Cycle
Volts (ac)	600/690	600/690
Current	1120	1380
HP	1150	1400
Speed @ rated HP	800 to 1800	800 to 1600 RPM
Torque (lb ft)	7550	9200
Speed @ rated torque	0 to 800	0 to 800 RPM
Max speed - 3000 RPM		

Your drilling applications are among the most rugged on earth. Our drilling motors are built to match. GE has 50 plus years of experience in the drilling industry, a worldwide service network, more than 1000 AC and thousands of DC drilling motors in service today.

To find out more fax inquiries to 832-295-7600 or visit us online at www.getransportation.com

Standard features

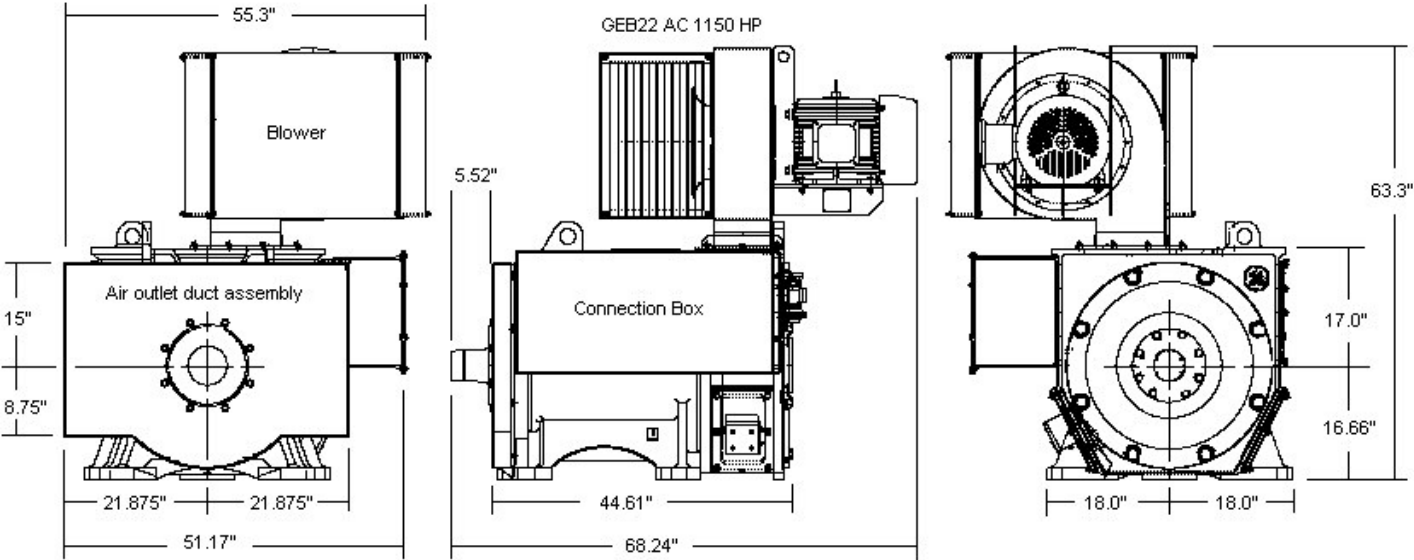
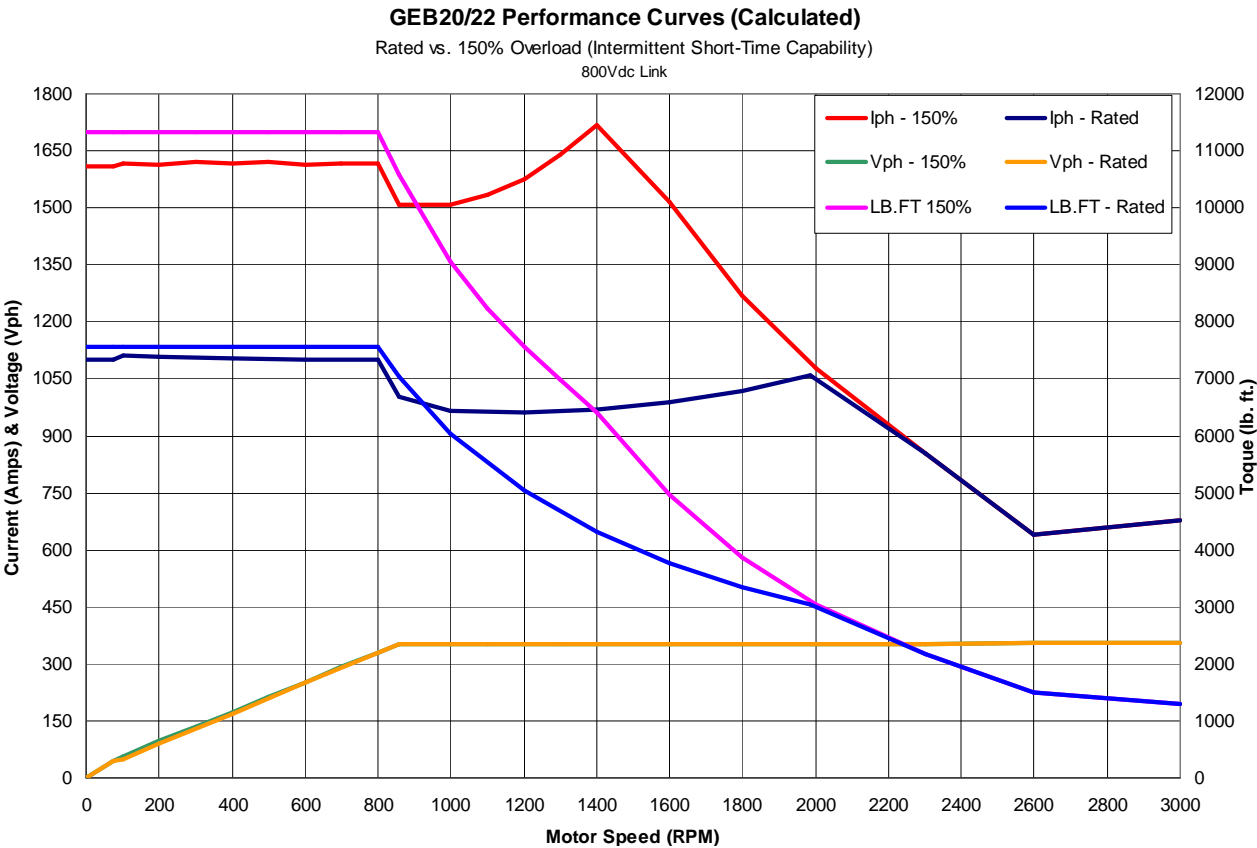
6-pole stator with FORM WOUND windings
Copper chromium alloy rotor bars
Class H insulation, robotically taped, Mica-Kapton system
4340 alloy shaft, ABS certified
Insulated bearing on non-drive end
Single shaft extension with hub
IP56 connection box with bus bar connections for main cables and terminals for RTD's
6 RTDs; Two 100 ohm platinum in each stator winding
Pressure sensor to verify ventilation
15 Hp blower assembly providing 3000 scfm
Intake louvers to protect from water ingress
Space heater
IP44 assembly rating
Dimensionally interchangeable with the GE752

Optional features:

Oversized shaft extension	CE Mark
Encoder	Sound attenuation
ABS certification	Bearing RTDs
Closed cooling (IP56)	ATEX certification (Exe II T3)



imagination at work



Dimensions are approximate. Not to be used for construction.

Approximate weight: 6500 lbs.



imagination at work