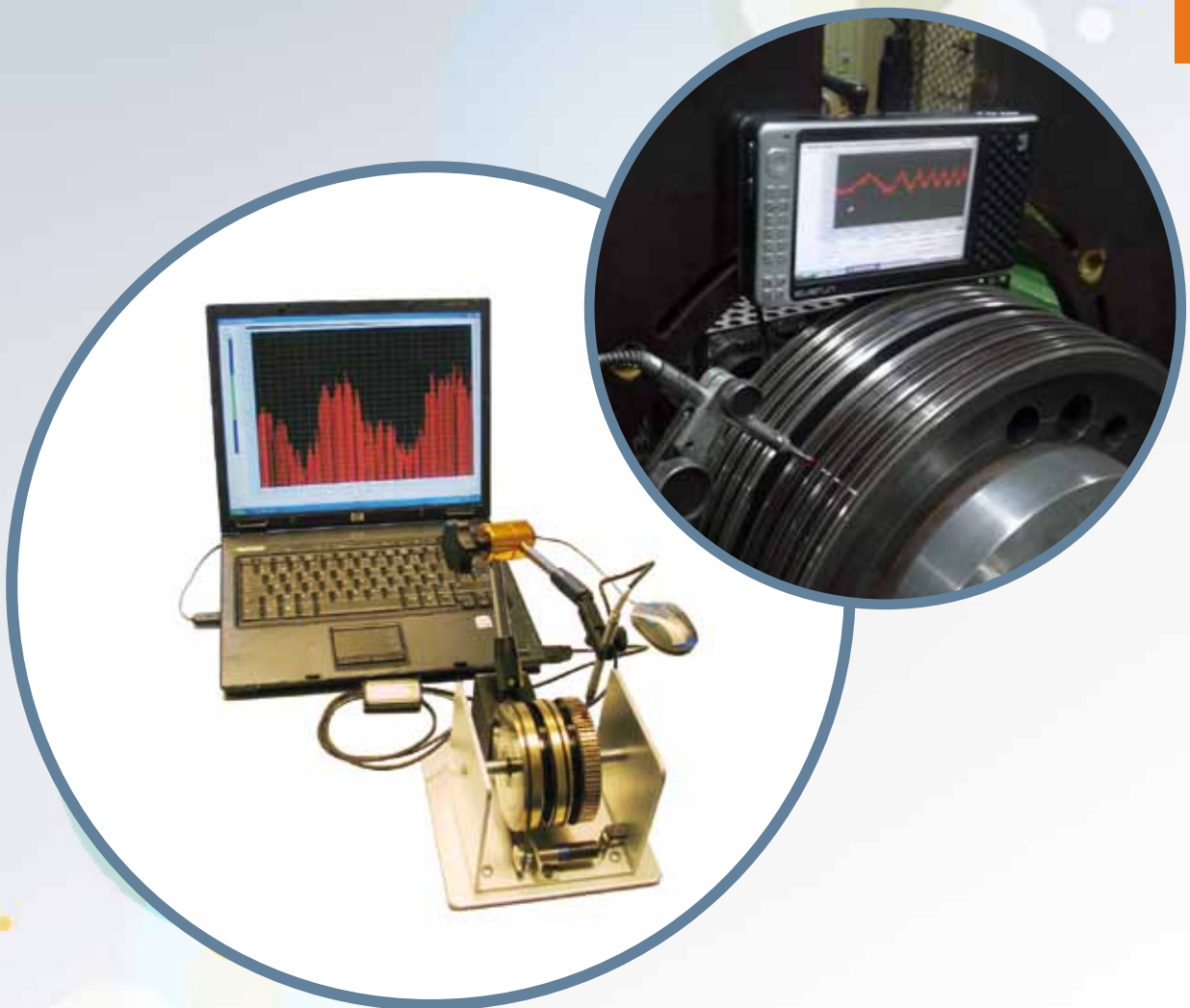


# CL-PROFILER

THE PERFECT SOLUTION  
FOR PROFILE MEASURES

SERVICES / TOOLS & MEASURING DEVICES



**MeRSEN**

# CL-Profiler...

...is the perfect solution for profiling slip ring assemblies and commutators

- CL-Profiler is easy to use in the field. Its probe comes with an ADP module that can be connected via USB to a laptop or UMPC\*.
- It allows you to measure precisely the runout of your rotating machine.
- It provides you with a clear visualization of the out roundness of your commutator/ring.
- CL-Profiler offers a very accurate resolution, within +/- 1  $\mu\text{m}$ .

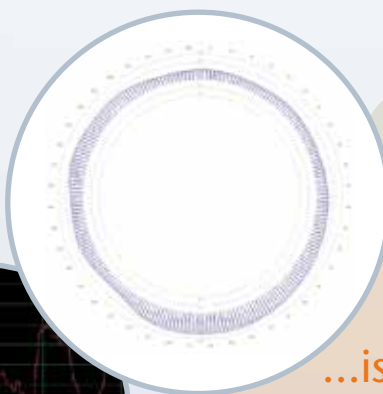
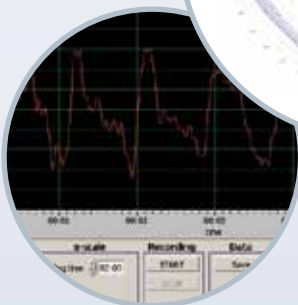
(\*Computers are not included in the standard Mersen CL-Profiler package)



...is a complete offer composed of:

- Probe
- ADP Transformer
- USB Cable
- Magnetic hold-clamp
- Software CD
- Calibration and CE certificate

**CL-Profiler package reference : 90328N**



...is a smart device with many advantages

- Easy to use
- Simple and user-friendly interface (Windows based software)
- Instant results display
- Smart zooming features
- Availability of standard measurement reports
- Possibility to print out results or to insert them into customized reports
- Access to prior measurements



Aside from a large range of tools & measuring devices, Mersen can also provide you with technical training and Motor & maintenance services. Mersen is a global Expert in materials and solutions for extreme environments as well as in the safety and reliability of electrical equipment.

For more information, please visit  
[www.mersen.com](http://www.mersen.com)  
[www.clprofiler.com](http://www.clprofiler.com)

**MERSEN**  
Expertise, our source of energy