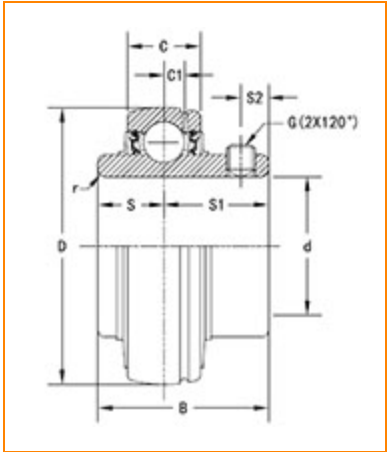




The Timken Company
4500 Mt Pleasant St. NW
N. Canton, OH 44720
Phone: (234) 262-3000
E-Mail: CustomerCAD@timken.com • **Web site:** www.timken.com

Part Number UC311-35, UC 300 Wide Inner Ring Ball Bearings - Set Screw Locking



[Specifications](#) | [Dimensions](#) | [Basic Load Ratings](#)

Specifications

Bore Type	Cylindrical bore
Bearing Type	Ball Bearing
Shaft Size d	2 3/16 in
Material	Bearing Steel
Locking Device	Set Screw Locking

Dimensions

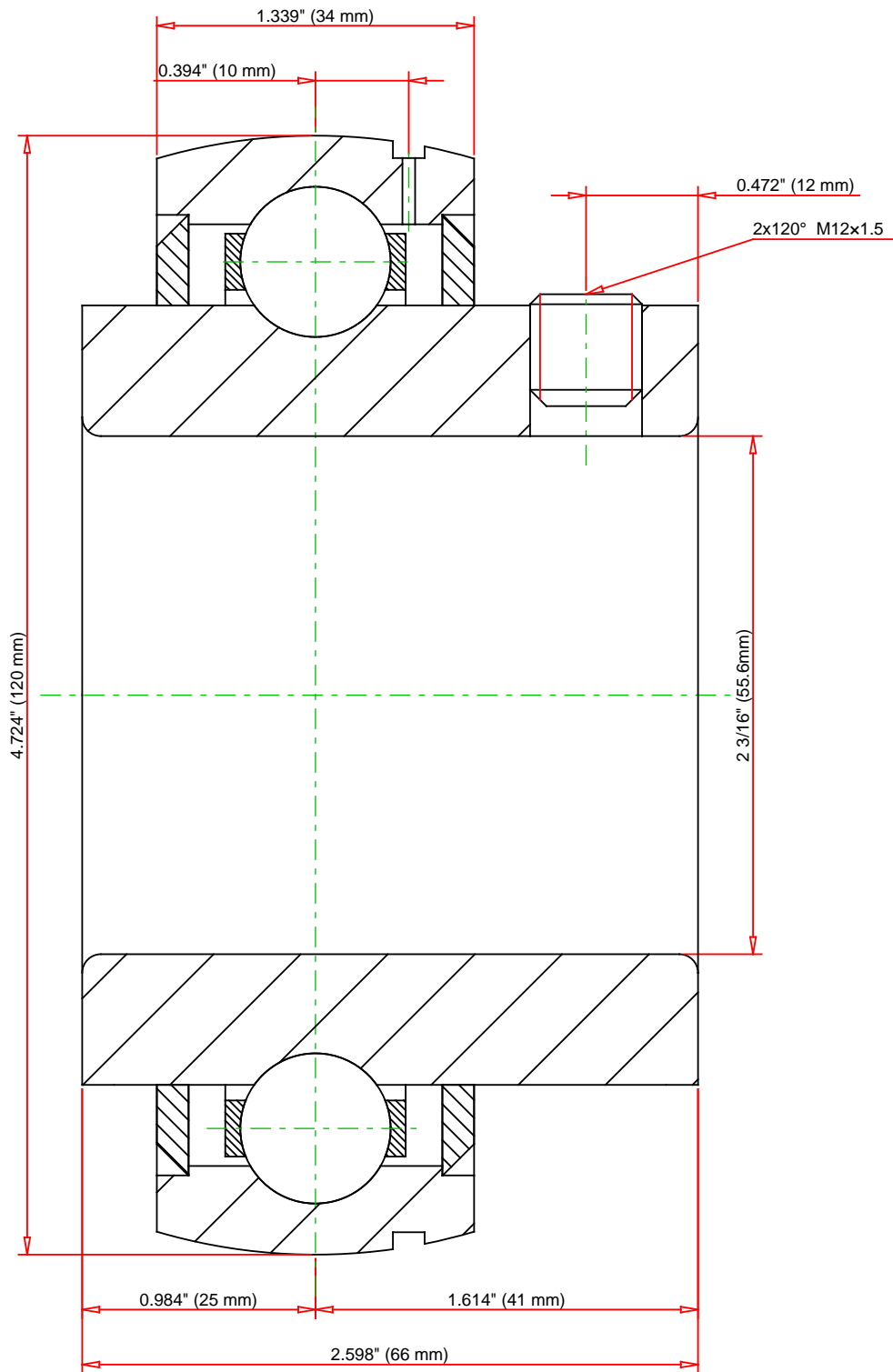
Outside Diameter D	120 mm 4.724 in
--------------------	--------------------



Outside Ring Width C	34 mm 1.339 in
Radius r	2 mm 0.079 in
Groove Position C1	10 mm 0.394 in
Center of Bearing from End S	25 mm 0.984 in
Dimension S1	41 mm 1.614 in
Set Screw Distance S2	12 mm 0.472 in
Set Screw Size	M12×1.5
Number of Set Screws	2
Angle between Set Screws	120 °

Basic Load Ratings

Static Load Rating	45000 N 10117 lbf
Dynamic Load Rating	71600 N 16096 lbf



Weight	1.7 lb	0.8 kg
--------	--------	--------

TIMKEN®

THE TIMKEN COMPANY
NORTH CANTON, OHIO USA

UC311-35

UC 300 Wide Inner Ring Ball Bearings - Set Screw Locking

Basic Load Ratings - C _r	16096 lbf	71600 N
Load Ratings - C _{0r}	10117 lbf	45000 N

Every reasonable effort has been made to ensure the accuracy of the information contained in this writing, but no liability is accepted for errors, omissions or for any other reason.

FOR DISCUSSION ONLY