



VM15

Release note

VM15 – Release note

9RNEN1502-1200
Release: 220217

VM15 - Release note

1. VM15 package v120.220217	1-5
1.1. Package composition	1-5
1.1.1. New features	1-5
1.1.2. Bug fixing	1-5
2. VM15 package v120.220204	2-6
2.1. Package composition	2-6
2.1.1. New features	2-6
2.1.2. Bug fixing	2-7
3. VM15 package v120.210721	3-8
3.1. Package composition	3-8
3.1.1. New features	3-8
3.1.2. Bug fixing	3-9
4. VM15 package v120.210709	4-10
4.1. Package composition	4-10
Bug fixing	4-10
5. VM15 package v120.210527 –do not use with gauge.....	5-11
5.1. Package composition	5-11
5.1.1. New features	5-12
5.1.2. Bug fixing	5-12
6. VM15 package v120.210520	6-13
6.1. Package composition	6-13
6.1.1. New features	6-14
6.1.2. Bug fixing	6-14
7. VM15 package v120.210506	7-15
7.1. Package composition	7-15
7.1.1. New features	7-16
7.1.2. Bug fixing	7-16
8. VM15 package v120.210406	8-17
8.1. Package composition	8-17
8.1.1. New features	8-18
8.1.2. Bug fixing	8-18
9. VM15 package v120.200911	9-19
9.1. Package composition	9-19
9.1.1. New features	9-19
9.1.2. Bug fixing	9-20
10. VM15 package v120.200603	10-21
10.1. Package composition	10-21
10.1.1. New features	10-22
10.1.2. Bug fixing	10-22
11. VM15 package v120.191112	11-23
11.1. Package composition	11-23
11.1.1. New features	11-24
11.1.2. Bug fixing	11-24

12. VM15 package v120.191008	12-25
12.1. Package composition	12-25
12.1.1. Bug fixing	12-25
13. VM15 package v120.190829	13-27
13.1. Package composition	13-27
13.1.1. New features	13-27
13.1.2. Bug fixing	13-28
14. VM15 package v120.181122	14-29
14.1. Package composition	14-29
14.1.1. New features	14-29
14.1.2. Bug fixing	14-29
15. VM15 package v120.181119	15-30
15.1. Package composition	15-30
15.1.1. New features	15-30
15.1.2. Bug fixing	15-31
16. VM15 package v120.180711	16-32
16.1. Package composition	16-32
16.1.1. New features	16-32
16.1.2. Bug fixing	16-33
17. VM15 package v120.180621	17-34
17.1. Package composition	17-34
17.1.1. New features	17-34
17.1.2. Bug fixing	17-35
18. VM15 package v120.180316	18-36
18.1. Package composition	18-36
18.1.1. New features	18-36
18.1.2. Bug fixing	18-37
19. VM15 package v120.180308	19-38
19.1. Package composition	19-38
19.1.1. New features	19-38
19.1.2. Bug fixing	19-38
20. VM15 package v120.171206	20-39
20.1. Package composition	20-39
20.1.1. New features	20-39
20.1.2. Bug fixing	20-40
21. VM15 package v120.171117	21-41
21.1. Package composition	21-41
21.1.1. New features	21-41
21.1.2. Bug fixing	21-42
22. VM15 package v120.171003	22-43
22.1. Package composition	22-43
22.1.1. New features	22-43
22.1.2. Bug fixing	22-43
23. VM15 package v120.170907	23-44
23.1. Package composition	23-44
23.1.1. New features	23-44

23.1.2. Bug fixing	23-44
24. VM15 package v120.170830	24-45
24.1. Package composition	24-45
24.1.1. New features	24-45
24.1.2. Bug fixing	24-45
25. VM15 package v120.170530	25-46
25.1. Package composition	25-46
25.1.1. New features	25-46
25.1.2. Bug fixing	25-46
26. VM15 package v120.170428	26-47
26.1. Package composition	26-47
26.1.1. New features	26-47
26.1.2. Bug fixing	26-47
Annex A – Updating Procedure.....	26-48
Annex B – Troubleshooting.....	26-53

1. VM15 package v120.220217

IMPORTANT 1

This package supports both VM25 and VM15 systems .

If into the VM25 System is included **at least** one device with software release **older than v120.170508**, then all the components of the system VM25 panel, VM25 HMI and function cards, must be updated. Updating a single component into a system, may not work properly.

IMPORTANT 2

Package version older than v120.171003 might be not upgradable by USB port, using the standard procedure.

In order to upgrade the system by USB port it is necessary to proceed as follow.

- 1) By VMx Service prepare a USB key for software update
- 2) Execute the software update of the VM25 panel following the standard procedure keeping pressed the button "8" while panel re-boots
- 3) Execute the software update of the complete system following the standard procedure

1.1. Package composition

ID	Version	Description / Notes
Win XP – Package zip	v120.201027	▪ Not supported for update
(Win7..10) VM25 HMI	v120.220204	
(Win7..10) VM Service	v120.220131	
VM15 Firmware	Vm15_v120_220217.BSz15	<ul style="list-style-type: none"> ▪ Panel VM15 Cx300 v120.220217 ▪ VMLink VL v120.220217 ▪ Balancer BN v120.220128 ▪ Gauge AG v120.190725 ▪ Gauge NG v120.220203 ▪ Touch Detector v120.201012 ▪ Multinet v120.220117
User document	v120.220128	
USB-485 Driver	v2.08.24 v2.12.28 (certified)	<ul style="list-style-type: none"> ▪ Win XP v2.08.24 ▪ Win 7,8,8.1,10 v2.12.28

1.1.1. New features

1. None

1.1.2. Bug fixing

Panel

1. Gauge NG - Cannot set "Dwell timeout (sparkout)" to -0.1
2. Crash on the language setting page if you try to go beyond the last line

2. VM15 package v120.220204

IMPORTANT 1

This package supports both VM25 and VM15 systems .

If into the VM25 System is included **at least** one device with software release **older than v120.170508**, then all the components of the system VM25 panel, VM25 HMI and function cards, must be updated. Updating a single component into a system, may not work properly.

IMPORTANT 2

Package version older than v120.171003 might be not upgradable by USB port, using the standard procedure.

In order to upgrade the system by USB port it is necessary to proceed as follow.

- 4) By VMx Service prepare a USB key for software update
- 5) Execute the software update of the VM25 panel following the standard procedure keeping pressed the button "8" while panel re-boots
- 6) Execute the software update of the complete system following the standard procedure

2.1. Package composition

ID	Version	Description / Notes
Win XP – Package zip	v120.201027	▪ Not supported for update
(Win7..10) VM25 HMI	v120.220204	
(Win7..10) VM Service	v120.220131	
VM15 Firmware	Vm15_v120_220203.BSz15	<ul style="list-style-type: none"> ▪ Panel VM15 Cx300 v120.220203 ▪ VMLink VL v120.220203 ▪ Balancer BN v120.220128 ▪ Gauge AG v120.190725 ▪ Gauge NG v120.220203 ▪ Touch Detector v120.201012 ▪ Multinet v120.220117
User document	v120.220128	
USB-485 Driver	v2.08.24 v2.12.28 (certified)	<ul style="list-style-type: none"> ▪ Win XP v2.08.24 ▪ Win 7,8,8.1,10 v2.12.28

2.1.1. New features

HMI

1. HMI - Added new parameters to choose the startup page of HMI and VIEWER.
2. HMI - Smart page change mode.
3. HMI - Update languages: SPANISH, SWEDEN
4. HMI - New parameter to enable the language change by remote
5. NG - New page layout with single ruler for G2, G3, ...
6. VIEWER - Custom colors is now possible
7. VIEWER - Optimization of the page change time

Panel

1. New parameter to enable the language change by remote

2.1.2. Bug fixing

HMI

1. VIEWER - Crash if double click on Page Change button
2. VIEWER - Top most button did not work
3. HMI - Label did not support special characters (string not displayed)
4. HMI - CPU cores No. 10 and 11 where not displayed
5. TD - In a PP with Envelop but not formula programmed, it was not possible to access the variable setup (FFT page)
6. BN - RPM value flashing while displayed on HMI (sometimes)

Balancer

1. Pre-Balancing function did not update some digital output

Touch Detector

1. Manual limit correction did not allow values greater than 300.0

Gauge NG

1. Offset calibration in analog output was incorrect

Multinet

1. Touch function did not work with data monitor active

VM Service

1. VM15 Multinet not recognized (sometimes)

3. VM15 package v120.210721

IMPORTANT (1)

Existing VM15 system, equipped with version up to v120.160921, must be first upgraded using the firmware defined as “VM15_UpgradePatch_v120_170428.BSz15” and following the procedure indicated in Annex A

IMPORTANT (2)

Package version older than v120.171003 might be not upgradable by USB port, using the standard procedure.

In order to upgrade the system by USB port it is necessary to proceed as follow.

- 1) By VMx Service prepare a USB key for software update
- 2) Execute the software update of the VM15 panel following the standard procedure keeping pressed the button “8” while panel re-boot
- 3) Execute the software update of the complete system following the standard procedure

3.1. Package composition

ID	Version	Description / Notes
VM15_UpgradePatch Firmware to update systems with version up to v120.160921 (1)	VM15_UpgradePatch_v120_170428.BSz15	<ul style="list-style-type: none"> ▪ Panel VM15 Cx300 v120.170428 ▪ Balancer v120.170428 ▪ Gauge v120.170428 ▪ Touch Detector v120.170428
VM15 HMI Win XP	v120.200317	
VM Service Win XP	v120.191112	
VM15 HMI Win7..10	v120.210721	
VM Service Win7..10	v120.210526	
VM15 Firmware	Vm25_v120_210721.BSz15	<ul style="list-style-type: none"> ▪ Panel VM15 Cx300 v120.210721 ▪ VMLink VL v120.210721 ▪ Balancer BN v120.210702 ▪ Gauge AG v120.190725 ▪ Gauge NG v120.210721 ▪ Touch Detector v120.201012 ▪ Multinet v120.210524
User document	v120.210721	
USB-485 Driver	v2.08.24 v2.12.28 (certified)	<ul style="list-style-type: none"> ▪ Win XP v2.08.24 ▪ Win 7,8,8.1,10 v2.12.28

3.1.1. New features

HMI / Panel

1. NG – new Analog Outputs management: up to 4 additional A.O. by 2 analog output extension cards.
2. Graphic control OCX: added new class SysLogic to R/W parameters.

Gauge NG

1. Analog outputs: up to 4 additional A.O. available. They need to include up to 2 analog output expansion cards

3.1.2. Bug fixing

HMI

1. MN – fix NG channel for Profibus/Profinet
2. Devices label is duplicated to all part programs
3. BN – freezing while viewer page is active

Panel

1. TD – In config Envelope V1 + Formula with P1 + V2 + V3+ V4 causes continuous resets of the panel
2. MN – Profibus/Profinet configuration: problem while using diagnostic data block for TD device.

4. VM15 package v120.210709

IMPORTANT (1)

Existing VM15 system, equipped with version up to v120.160921, must be first upgraded using the firmware defined as “VM15_UpgradePatch_v120_170428.BSz15” and following the procedure indicated in Annex A

IMPORTANT (2)

Package version older than v120.171003 might be not upgradable by USB port, using the standard procedure.

In order to upgrade the system by USB port it is necessary to proceed as follow.

- 1) By VMx Service prepare a USB key for software update
- 2) Execute the software update of the VM15 panel following the standard procedure keeping pressed the button “8” while panel re-boot
- 3) Execute the software update of the complete system following the standard procedure

4.1. Package composition

ID	Version	Description / Notes
VM15_UpgradePatch Firmware to update systems with version up to v120.160921 (1)	VM15_UpgradePatch_v120_170428.BSz15	<ul style="list-style-type: none"> ▪ Panel VM15 Cx300 v120.170428 ▪ Balancer v120.170428 ▪ Gauge v120.170428 ▪ Touch Detector v120.170428
VM15 HMI Win XP	v120.200317	
VM Service Win XP	v120.191112	
VM15 HMI Win7..10	v120.210526	
VM Service Win7..10	v120.210526	
VM15 Firmware	Vm15_v120_210709.BSz15	<ul style="list-style-type: none"> ▪ Panel VM15 Cx300 v120.210526 ▪ VMLink VL v120.210626 ▪ Balancer v120.201030 ▪ Gauge AG v120.190725 ▪ Gauge NG v120.210528 ▪ Touch Detector v120.201012 ▪ Multinet v120.210524
User document	v120.210503	
USB-485 Driver	v2.08.24 v2.12.28 (certified)	<ul style="list-style-type: none"> ▪ Win XP v2.08.24 ▪ Win 7,8,8.1,10 v2.12.28

Bug fixing

Gauge (NG)

1. Clear offset while start cycle issued
2. FPGA Optimization

5. VM15 package v120.210527 –do not use with gauge

IMPORTANT (1)

Existing VM15 system, equipped with version up to v120.160921, must be first upgraded using the firmware defined as “VM15_UpgradePatch_v120_170428.BSz15” and following the procedure indicated in Annex A

IMPORTANT (2)

Package version older than v120.171003 might be not upgradable by USB port, using the standard procedure.

In order to upgrade the system by USB port it is necessary to proceed as follow.

- 1) By VMx Service prepare a USB key for software update
- 2) Execute the software update of the VM15 panel following the standard procedure keeping pressed the button “8” while panel re-boot
- 3) Execute the software update of the complete system following the standard procedure

5.1. Package composition

ID	Version	Description / Notes
VM15_UpgradePatch Firmware to update systems with version up to v120.160921 (1)	VM15_UpgradePatch_v120_170428.BSz15	<ul style="list-style-type: none"> ▪ Panel VM15 Cx300 v120.170428 ▪ Balancer v120.170428 ▪ Gauge v120.170428 ▪ Touch Detector v120.170428
VM15 HMI Win XP	v120.200317	
VM Service Win XP	v120.191112	
VM15 HMI Win7..10	v120.210526	
VM Service Win7..10	v120.210526	
VM15 Firmware	Vm15_v120_210526.BSz15	<ul style="list-style-type: none"> ▪ Panel VM15 Cx300 v120.210526 ▪ VMLink VL v120.210626 ▪ Balancer v120.201030 ▪ Gauge AG v120.190725 ▪ Gauge NG v120.210526 ▪ Touch Detector v120.201012 ▪ Multinet v120.210524
User document	v120.210503	
USB-485 Driver	v2.08.24 v2.12.28 (certified)	<ul style="list-style-type: none"> ▪ Win XP v2.08.24 ▪ Win 7,8,8.1,10 v2.12.28

5.1.1. New features

Multinet

1. Profibus / Profinet R/W gauge offset of NG card also for AG and AG-Abs interface

HMI / Panel

1. Added parameter on NG device

Gauge (NG)

1. New parameter: "Dimension stability timeout" to improve post-process gauging mode

5.1.2. Bug fixing

VM Service

1. Minor bug fixing

Gauge (NG)

1. Error while writing negative offset values by Profibus/Profinet interface

6. VM15 package v120.210520

IMPORTANT (1)

Existing VM15 system, equipped with version up to v120.160921, must be first upgraded using the firmware defined as “VM15_UpgradePatch_v120_170428.BSz15” and following the procedure indicated in Annex A

IMPORTANT (2)

Package version older than v120.171003 might be not upgradable by USB port, using the standard procedure.

In order to upgrade the system by USB port it is necessary to proceed as follow.

- 1) By VMx Service prepare a USB key for software update
- 2) Execute the software update of the VM15 panel following the standard procedure keeping pressed the button “8” while panel re-boot
- 3) Execute the software update of the complete system following the standard procedure

6.1. Package composition

ID	Version	Description / Notes
VM15_UpgradePatch Firmware to update systems with version up to v120.160921 (1)	VM15_UpgradePatch_v120_170428.BSz15	<ul style="list-style-type: none"> ▪ Panel VM15 Cx300 v120.170428 ▪ Balancer v120.170428 ▪ Gauge v120.170428 ▪ Touch Detector v120.170428
VM15 HMI Win XP	v120.200317	
VM Service Win XP	v120.191112	
VM15 HMI Win7..10	v120.210506	
VM Service Win7..10	v120.210503	
VM15 Firmware	Vm15_v120_210520.BSz15	<ul style="list-style-type: none"> ▪ Panel VM15 Cx300 v120.210520 ▪ VMLink VL v120.210620 ▪ Balancer v120.201030 ▪ Gauge AG v120.190725 ▪ Gauge NG v120.210520 ▪ Touch Detector v120.201012 ▪ Multinet v120.210422
User document	v120.210503	
USB-485 Driver	v2.08.24 v2.12.28 (certified)	<ul style="list-style-type: none"> ▪ Win XP v2.08.24 ▪ Win 7,8,8.1,10 v2.12.28

6.1.1. New features

none

6.1.2. Bug fixing

Gauge (NG)

1. New FPGA v19 - optimization in energizing voltage generation.

7. VM15 package v120.210506

IMPORTANT (1)

Existing VM15 system, equipped with version up to v120.160921, must be first upgraded using the firmware defined as “VM15_UpgradePatch_v120_170428.BSz15” and following the procedure indicated in Annex A

IMPORTANT (2)

Package version older than v120.171003 might be not upgradable by USB port, using the standard procedure.

In order to upgrade the system by USB port it is necessary to proceed as follow.

- 1) By VMx Service prepare a USB key for software update
- 2) Execute the software update of the VM15 panel following the standard procedure keeping pressed the button “8” while panel re-boot
- 3) Execute the software update of the complete system following the standard procedure

7.1. Package composition

ID	Version	Description / Notes
VM15_UpgradePatch Firmware to update systems with version up to v120.160921 (1)	VM15_UpgradePatch_v120_170428.BSz15	<ul style="list-style-type: none"> ▪ Panel VM15 Cx300 v120.170428 ▪ Balancer v120.170428 ▪ Gauge v120.170428 ▪ Touch Detector v120.170428
VM15 HMI Win XP	v120.200317	
VM Service Win XP	v120.191112	
VM15 HMI Win7..10	v120.210506	
VM Service Win7..10	v120.210503	
VM15 Firmware	Vm15_v120_210506.BSz15	<ul style="list-style-type: none"> ▪ Panel VM15 Cx300 v120.210506 ▪ VMLink VL v120.210606 ▪ Balancer v120.201030 ▪ Gauge AG v120.190725 ▪ Gauge NG v120.210426 ▪ Touch Detector v120.201012 ▪ Multinet v120.210422
User document	v120.210503	
USB-485 Driver	v2.08.24 v2.12.28 (certified)	<ul style="list-style-type: none"> ▪ Win XP v2.08.24 ▪ Win 7,8,8.1,10 v2.12.28

7.1.1. New features

HMI (for ®Windows 7-10)

2. Graphic control OCX: added methods to R/W parameters for each device
3. Profibus / Profinet config to R/W gauge offset of NG card
4. 2 plane balancer, pairing function: card No.2 managed in background
5. HMI parameter for optimizing icon loading at startup
6. HMI added splash form at startup
7. HMI parameter to set CPU priority and affinity
8. HMI parameter to set sampling diagrams time
9. VMLink: added command to stop device search
10. Optimization in TD envelope option menu

Panel & VMLink

1. Profibus / Profinet config to R/W gauge offset of NG card
2. Optimization in TD envelope option menu

Gauge (NG)

1. Profibus / Profinet R/W gauge offset of NG card

Multinet

1. Profibus / Profinet R/W gauge offset of NG card

VM Service

1. VMLink: added command to stop device search

7.1.2. Bug fixing

HMI (for ®Windows 7-10)

1. NG: Mechanical zeroing diagram out of range
2. Viewer: Command message box
3. Viewer: Minor bug
4. VMLink: Task device search
5. BN: With NOL application the folder “Head Parameters [B4]” appears two times

Panel & VMLink

1. TD diagram re-starts after reset
2. BN: With NOL application the folder “Head Parameters [B4]” appears two times

Gauge (NG)

1. Synchronized gauging and roundness functions with hardware sync and No. of pulses > 1
2. New FPGA v18

8. VM15 package v120.210406

IMPORTANT (1)

Existing VM15 system, equipped with version up to v120.160921, must be first upgraded using the firmware defined as “VM15_UpgradePatch_v120_170428.BSz15” and following the procedure indicated in Annex A

IMPORTANT (2)

Package version older than v120.171003 might be not upgradable by USB port, using the standard procedure.

In order to upgrade the system by USB port it is necessary to proceed as follow.

- 1) By VMx Service prepare a USB key for software update
- 2) Execute the software update of the VM15 panel following the standard procedure keeping pressed the button “8” while panel re-boot
- 3) Execute the software update of the complete system following the standard procedure

8.1. Package composition

ID	Version	Description / Notes
VM15_UpgradePatch Firmware to update systems with version up to v120.160921 (1)	VM15_UpgradePatch_v120_170428.BSz15	<ul style="list-style-type: none"> ▪ Panel VM15 Cx300 v120.170428 ▪ Balancer v120.170428 ▪ Gauge v120.170428 ▪ Touch Detector v120.170428
VM15 HMI Win XP	v120.200317	
VM Service Win XP	v120.191112	
VM15 HMI Win7..10	v120.201210	
VM Service Win7..10	v120.200908	
VM15 Firmware	Vm15_v120_210402.BSz15	<ul style="list-style-type: none"> ▪ Panel VM15 Cx300 v120.210308 ▪ VMLink VL v120.210308 ▪ Balancer v120.201030 ▪ Gauge AG v120.190725 ▪ Gauge NG v120.210402 ▪ Touch Detector v120.201012 ▪ Multinet v120.200401
User document	v120.210406	
USB-485 Driver	v2.08.24 v2.12.28 (certified)	<ul style="list-style-type: none"> ▪ Win XP v2.08.24 ▪ Win 7,8,8.1,10 v2.12.28

8.1.1. New features

HMI (for ®Windows 7-10)

1. HMI Viewer: new function to create custom pages of VM15 controls
2. Automatic connect at application startup, if not checked the "Manual management of the communication layer"
3. Added a custom label on each part-program of the devices
4. NG gauge parameters management to set CAN-Open baudrate to 1Mbps or 500Kbps

Panel & VMLink

1. NG gauge parameters management to set CAN-Open baudrate to 1Mbps or 500Kbps

Gauge (NG)

1. Added parameters to set CAN-Open baudrate to 1Mbps or 500Kbps

8.1.2. Bug fixing

HMI (for ®Windows 7-10)

1. Minor bugs on TD - envelope function
2. Minor bugs on TD absolute vs incremental diagram
3. Optimization on Profi-debug function

VM Service (for ®Windows 7-10)

1. Minor Bug on backup&restore TD-Envelope parameters (dllBackup 120.200414)

Gauge (NG)

1. Minor bugs

Touch Detector

1. Minor bugs in envelope function

Balancer

1. Impossible to set 2 plane application with TRY algorithm

9. VM15 package v120.200911

IMPORTANT (1)

Existing VM15 system, equipped with version up to v120.160921, must be first upgraded using the firmware defined as “VM15_UpgradePatch_v120_170428.BSz15” and following the procedure indicated in Annex A

IMPORTANT (2)

Package version older than v120.171003 might be not upgradable by USB port, using the standard procedure.

In order to upgrade the system by USB port it is necessary to proceed as follow.

- 1) By VMx Service prepare a USB key for software update
- 2) Execute the software update of the VM15 panel following the standard procedure keeping pressed the button “8” while panel re-boot
- 3) Execute the software update of the complete system following the standard procedure

9.1. Package composition

ID	Version	Description / Notes
VM15_UpgradePatch Firmware to update systems with version up to v120.160921 (1)	VM15_UpgradePatch_v120_170428.BSz15	<ul style="list-style-type: none"> ▪ Panel VM15 Cx300 v120.170428 ▪ Balancer v120.170428 ▪ Gauge v120.170428 ▪ Touch Detector v120.170428
VM15 HMI Win XP	v120.200317	
VM Service Win XP	v120.191112	
VM15 HMI Win7..10	v120.200911	
VM Service Win7..10	v120.200908	
VM15 Firmware	Vm15_v120_200911.BSz15	<ul style="list-style-type: none"> ▪ Panel VM25 Cx300 v120.200911 ▪ VMLink VL v120.200911 ▪ Balancer v120.200908 ▪ Gauge AG v120.190725 ▪ Gauge NG v120.200731 ▪ Touch Detector v120.200911 ▪ Multinet v120.200401
User document	v120.200914	
USB-485 Driver	v2.08.24 v2.12.28 (certified)	<ul style="list-style-type: none"> ▪ Win XP v2.08.24 ▪ Win 7,8,8.1,10 v2.12.28

9.1.1. New features

HMI (for @Windows 7-10)

1. Shows devices type in system page.

Panel

1. Shows devices type in system page.
2. Remote Programming: Added dedicated page number code for all NG devices

Balancer

1. Absolute balancer: Intermediate tolerance available
2. Absolute balancer: Machine shut down while NoLink is on, does not affect reference position

9.1.2. Bug fixing

HMI (for ®Windows 7-10)

1. Minor bugs on TD - envelope function
2. Minor bugs on TD absolute vs incremental diagram
3. Optimization on Profi-debug function

VM Service (for ®Windows 7-10)

1. Minor Bug on backup&restore TD-Envelope parameters (dllBackup 120.200414)

Gauge (NG)

1. Minor bugs (related to linear encoder setup)

Touch Detector

1. Minor bugs in envelope function
2. Internal fram reset procedure does not run on ver. 12.0.200528 (only)

10. VM15 package v120.200603

IMPORTANT (1)

Existing VM15 system, equipped with version up to v120.160921, must be first upgraded using the firmware defined as “VM15_UpgradePatch_v120_170428.BSz15” and following the procedure indicated in Annex A

IMPORTANT (2)

Package version older than v120.171003 might be not upgradable by USB port, using the standard procedure.

In order to upgrade the system by USB port it is necessary to proceed as follow.

- 1) By VMx Service prepare a USB key for software update
- 2) Execute the software update of the VM15 panel following the standard procedure keeping pressed the button “8” while panel re-boot
- 3) Execute the software update of the complete system following the standard procedure

10.1. Package composition

ID	Version	Description / Notes
VM15_UpgradePatch Firmware to update systems with version up to v120.160921 (1)	VM15_UpgradePatch_v120_170428.BSz15	<ul style="list-style-type: none"> ▪ Panel VM15 Cx300 v120.170428 ▪ Balancer v120.170428 ▪ Gauge v120.170428 ▪ Touch Detector v120.170428
VM15 HMI Win XP	v120.200317	
VM Service Win XP	v120.191112	
VM15 HMI Win7..10	v120.200528	
VM Service Win7..10	v120.200528	
VM15 Firmware	Vm15_v120_200603.BSz15	<ul style="list-style-type: none"> ▪ Panel VM25 Cx300 v120.200603 ▪ VMLink VL v120.200603 ▪ Balancer v120.200528 ▪ Gauge AG v120.190725 ▪ Gauge NG v120.200205 ▪ Touch Detector v120.200528 ▪ Multinet v120.200401
User document	v120.200528	<ul style="list-style-type: none"> ▪ Updated accordingly (English only)
USB-485 Driver	v2.08.24 v2.12.28 (certified)	<ul style="list-style-type: none"> ▪ Win XP v2.08.24 ▪ Win 7,8,8.1,10 v2.12.28

10.1.1. New features

HMI & VM Service (for @Windows 7-10)

1. Version for @Windows 7 or higher with .NET framework 4.5.2
2. Exposed screenshot function for OCX .
3. Update balancer setup parameter
4. Touch detector Envelope function
5. TD Tester and BN Tester function
6. Touch detector parameters for Tester function.
7. Updated according to new Touch detector feature

HMI & VM Service (for Win XP)

1. Exposed screenshot function for OCX

Panel

1. Touch detector Envelope function
2. TD Tester and BN Tester function
3. Touch detector parameters for Tester function

Balancer

1. Added "Shared collector" management
2. BN Tester function

Touch Detector

1. Envelope function
2. TD Tester function

Multinet

1. Envelope interface
2. Signalling for Tester function

10.1.2. Bug fixing

HMI (for @Windows 7-10 and Win XP)

1. Exposed function for screenshot OCX
2. Fixed protection formula on TD under certain condition
3. Fixed text resize on Balancer 640x480
4. Commands not available in system page while HMI startup and no devices selected

Multinet

1. Minor bugs
2. Signalling while a 2 plane card is configured for 1 plane operating mode

Gauge (NG)

1. Minor bugs (related to linear encoder setup)

Balancer

1. Minor bugs

11. VM15 package v120.191112

IMPORTANT (1)

Existing VM15 system, equipped with version up to v120.160921, must be first upgraded using the firmware defined as “VM15_UpgradePatch_v120_170428.BSz15” and following the procedure indicated in Annex A

IMPORTANT (2)

Package version older than v120.171003 might be not upgradable by USB port, using the standard procedure.

In order to upgrade the system by USB port it is necessary to proceed as follow.

- 1) By VMx Service prepare a USB key for software update
- 2) Execute the software update of the VM15 panel following the standard procedure keeping pressed the button “8” while panel re-boot
- 3) Execute the software update of the complete system following the standard procedure

11.1. Package composition

ID	Version	Description / Notes
VM15_UpgradePatch Firmware to update systems with version up to v120.160921 (1)	VM15_UpgradePatch_v120_170428.BSz15	<ul style="list-style-type: none"> ▪ Panel VM15 Cx300 v120.170428 ▪ Balancer v120.170428 ▪ Gauge v120.170428 ▪ Touch Detector v120.170428
VM15 HMI Win XP	v120.191111	
VM Service Win XP	v120.191112	
VM15 HMI Win7..10	v120.191111	
VM Service Win7..10	v120.191112	
VM15 Firmware	Vm15_v120_191111.BSz15	<ul style="list-style-type: none"> ▪ Panel VM25 Cx300 v120.191111 ▪ VMLink VL v120.191108 ▪ Balancer v120.191025 ▪ Gauge AG v120.190725 ▪ Gauge NG v120.190725 ▪ Touch Detector v120.190315 ▪ Multinet v120.190918
User document	v120.191112	<ul style="list-style-type: none"> ▪ Updated accordingly (English only)
USB-485 Driver	v2.08.24 v2.12.28 (certified)	<ul style="list-style-type: none"> ▪ Win XP v2.08.24 ▪ Win 7,8,8.1,10 v2.12.28

11.1.1. New features

VMLink

1. Added VMLink device

Panel

1. Added management of VMLink device: configuration, setup, upgrade, backup/restore.

HMI & VM Service (for XP)

1. Last version for ®Windows XP with .NET framework 2.0
2. Added management of VMLink device: configuration, setup, upgrade, backup/restore.

HMI & VM Service (for ®Windows 7-10)

1. Version for ®Windows 7 or higher with .NET framework 4.8
2. Added management of VMLink device: configuration, setup, upgrade, backup/restore.

11.1.2. Bug fixing

1. none

12. VM15 package v120.191008

IMPORTANT (1)

Existing VM15 system, equipped with version up to v120.160921, must be first upgraded using the firmware defined as “VM15_UpgradePatch_v120_170428.BSz15” and following the procedure indicated in Annex A

IMPORTANT (2)

Package version older than v120.171003 might be not upgradable by USB port, using the standard procedure.

In order to upgrade the system by USB port it is necessary to proceed as follow.

- 1) By VMx Service prepare a USB key for software update
- 2) Execute the software update of the VM15 panel following the standard procedure keeping pressed the button “8” while panel re-boot
- 3) Execute the software update of the complete system following the standard procedure

12.1. Package composition

ID	Version	Description / Notes
VM15_UpgradePatch Firmware to update systems with version up to v120.160921 (1)	VM15_UpgradePatch_v120_170428.BSz15	<ul style="list-style-type: none"> ▪ Panel VM15 Cx300 v120.170428 ▪ Balancer v120.170428 ▪ Gauge v120.170428 ▪ Touch Detector v120.170428
VM15 Firmware	Vm15_v120_191008.BSz15	<ul style="list-style-type: none"> ▪ Panel VM25 Cx300 v120.190909 ▪ Balancer v120.190403 ▪ Gauge AG v120.190725 ▪ Gauge NG v120.190725 ▪ Touch Detector v120.190315 ▪ Multinet v120.190918
VM15 HMI	v120.190904	
VM Service	v120.190716	
User document	v120.190828	<ul style="list-style-type: none"> ▪ Updated accordingly (English only)
USB-485 Driver	v2.08.24 v2.12.28 (certified)	<ul style="list-style-type: none"> ▪ Win XP v2.08.24 ▪ Win 7,8,8.1,10 v2.12.28

12.1.1. Bug fixing

MultiNet

1. NG card profibus/profinet error in data block size.
2. NG – Digital I/O (in case of BCD application). Wrong signal on pin 4.
3. AG - Digital I/O (in case of BCD application). Wrong signals on pin 4 and 11. Errata mappatura pin 11 (and pin 4)

Panel

1. TD formula protection locked under certain condition
2. TD FFT Parameter No. 200329: wrong data format (in read only page)

HMI

1. TD FFT Parameter No. 200329: wrong data format (in read only page)

13. VM15 package v120.190829

IMPORTANT (1)

Existing VM15 system, equipped with version up to v120.160921, must be first upgraded using the firmware defined as “VM15_UpgradePatch_v120_170428.BSz15” and following the procedure indicated in Annex A

IMPORTANT (2)

Package version older than v120.171003 might be not upgradable by USB port, using the standard procedure.

In order to upgrade the system by USB port it is necessary to proceed as follow.

- 1) By VMx Service prepare a USB key for software update
- 2) Execute the software update of the VM15 panel following the standard procedure keeping pressed the button “8” while panel re-boot
- 3) Execute the software update of the complete system following the standard procedure

13.1. Package composition

ID	Version	Description / Notes
VM15_UpgradePatch Firmware to update systems with version up to v120.160921 (1)	VM15_UpgradePatch_v120_170428.BSz15	<ul style="list-style-type: none"> ▪ Panel VM15 Cx300 v120.170428 ▪ Balancer v120.170428 ▪ Gauge v120.170428 ▪ Touch Detector v120.170428
VM15 Firmware	Vm15_v120_190829.BSz15	<ul style="list-style-type: none"> ▪ Panel VM15 Cx300 v120.190829 ▪ Balancer v120.190423 ▪ Gauge AG v120.190725 ▪ Gauge NG v120.190725 ▪ Touch Detector v120.190315 ▪ Multinet v120.190712
VM15 HMI	v120.190725	
VM Service	v120.190716	
User document	v120.190731	<ul style="list-style-type: none"> ▪ Updated accordingly (English only)
USB-485 Driver	v2.08.24 v2.12.28 (certified)	<ul style="list-style-type: none"> ▪ Win XP v2.08.24 ▪ Win 7,8,8.1,10 v2.12.28

13.1.1. New features

HMI & Panel

1. Added Gauge NG card
2. Option for OPERATOR login level
3. Display of the last valid RF channel for NoLink device (for maintenance operation)
4. Display (read only) of the FFT setup parameters on TD card
5. TD: enable / disable limit 3 bargraph

Balancer

1. Display of the last valid RF channel for NoLink device (for maintenance operation)

Touch Detector

1. Display (read only) of the FFT setup parameters on TD card

Gauge [NG type]

1. Added Gauge NG card

Multinet

1. Profibus DP – Profinet data block for NG card
2. Extended digital interface for NG card

VM Service

1. Added Gauge NG card

User document

1. Added Gauge NG card

13.1.2. Bug fixing

HMI

1. Communication layer optimization
2. Minor bugs

Panel

1. Communication layer optimization
2. Minor bugs

Balancer

1. RF channel setup optimization
2. Part program copy 1 to 4.
3. Optimizations for setup parameter “NoLink control” = Enable.

Touch Detector

3. FPGA v.8819 (reserved for BS use)

VM Service

1. Communication layer optimization
2. Minor bugs

14. VM15 package v120.181122

IMPORTANT (1)

Existing VM15 system, equipped with version up to v120.160921, must be first upgraded using the firmware defined as “VM15_UpgradePatch_v120_170428.BSz15” and following the procedure indicated in Annex A

IMPORTANT (2)

Package version older than v120.171003 might be not upgradable by USB port, using the standard procedure.

In order to upgrade the system by USB port it is necessary to proceed as follow.

- 1) By VMx Service prepare a USB key for software update
- 2) Execute the software update of the VM15 panel following the standard procedure keeping pressed the button “8” while panel re-boot
- 3) Execute the software update of the complete system following the standard procedure

14.1. Package composition

ID	Version	Description / Notes
VM15_UpgradePatch Firmware to update systems with version up to v120.160921 (1)	VM15_UpgradePatch_v120_170428.BSz15	<ul style="list-style-type: none"> ▪ Panel VM15 Cx300 v120.170428 ▪ Balancer v120.170428 ▪ Gauge v120.170428 ▪ Touch Detector v120.170428
VM15 Firmware	Vm15_v120_181119.BSz15	<ul style="list-style-type: none"> ▪ Panel VM15 Cx300 v120.181026 ▪ Balancer v120.180802 ▪ Gauge AG v120.180918 ▪ Touch Detector v120.181026 ▪ Multinet v120.181002
VM15 HMI	v120.181122	
VM Service	v120.181122	
User document	v120.180619	<ul style="list-style-type: none"> ▪ Updated accordingly (English only)
USB-485 Driver	v2.08.24 v2.12.28 (certified)	<ul style="list-style-type: none"> ▪ Win XP v2.08.24 ▪ Win 7,8,8.1,10 v2.12.28

14.1.1. New features

none

14.1.2. Bug fixing

HMI

1. In local configuration, MNet r/w operations via acyclic data cannot be performed

15. VM15 package v120.181119

IMPORTANT (1)

Existing VM15 system, equipped with version up to v120.160921, must be first upgraded using the firmware defined as “VM15_UpgradePatch_v120_170428.BSz15” and following the procedure indicated in Annex A

IMPORTANT (2)

Package version older than v120.171003 might be not upgradable by USB port, using the standard procedure.

In order to upgrade the system by USB port it is necessary to proceed as follow.

- 1) By VMx Service prepare a USB key for software update
- 2) Execute the software update of the VM15 panel following the standard procedure keeping pressed the button “8” while panel re-boot
- 3) Execute the software update of the complete system following the standard procedure

15.1. Package composition

ID	Version	Description / Notes
VM15_UpgradePatch Firmware to update systems with version up to v120.160921 (1)	VM15_UpgradePatch_v120_170428.BSz15	<ul style="list-style-type: none"> ▪ Panel VM15 Cx300 v120.170428 ▪ Balancer v120.170428 ▪ Gauge v120.170428 ▪ Touch Detector v120.170428
VM15 Firmware	Vm15_v120_181119.BSz15	<ul style="list-style-type: none"> ▪ Panel VM15 Cx300 v120.181026 ▪ Balancer v120.180802 ▪ Gauge AG v120.180918 ▪ Touch Detector v120.181026 ▪ Multinet v120.181002
VM15 HMI	v120.181025	
VM Service	v120.181025	
User document	v120.180619	<ul style="list-style-type: none"> ▪ Updated accordingly (English only)
USB-485 Driver	v2.08.24 v2.12.28 (certified)	<ul style="list-style-type: none"> ▪ Win XP v2.08.24 ▪ Win 7,8,8.1,10 v2.12.28

15.1.1. New features

Panel & HMI

1. Added display mode for synchronized gauge (managed by setup parameter)

Gauge AG

1. Added display mode for synchronized gauge (managed by setup parameter)
2. Synchronized zeroing function optimization

15.1.2. Bug fixing

HMI

1. Error serial port do not allow re-connection
2. BN – F3 button not available under certain condition.

Balancer

1. Analog output: 0..10V related to source

Touch Detector

1. Saturation of signal under certain condition (FPGA)

VM Service

1. Minor bug

16. VM15 package v120.180711

IMPORTANT (1)

Existing VM15 system, equipped with version up to v120.160921, must be first upgraded using the firmware defined as “VM15_UpgradePatch_v120_170428.BSz15” and following the procedure indicated in Annex A

IMPORTANT (2)

Package version older than v120.171003 might be not upgradable by USB port, using the standard procedure.

In order to upgrade the system by USB port it is necessary to proceed as follow.

- 1) By VMx Service prepare a USB key for software update
- 2) Execute the software update of the VM15 panel following the standard procedure keeping pressed the button “8” while panel re-boot
- 3) Execute the software update of the complete system following the standard procedure

16.1. Package composition

ID	Version	Description / Notes
VM15_UpgradePatch Firmware to update systems with version up to v120.160921 (1)	VM15_UpgradePatch_v120_170428.BSz15	<ul style="list-style-type: none"> ▪ Panel VM15 Cx300 v120.170428 ▪ Balancer v120.170428 ▪ Gauge v120.170428 ▪ Touch Detector v120.170428
VM15 Firmware	Vm15_v120_180711.BSz15	<ul style="list-style-type: none"> ▪ Panel VM15 Cx300 v120.180620 ▪ Balancer v120.180711 ▪ Gauge AG v120.180528 ▪ Touch Detector v120.180517 ▪ Multinet v120.180620
VM15 HMI	v120.180706	
VM Service	v120.180706	
User document	v120.180619	<ul style="list-style-type: none"> ▪ Updated accordingly (English only)
USB-485 Driver	v2.08.24 v2.12.28 (certified)	<ul style="list-style-type: none"> ▪ Win XP v2.08.24 ▪ Win 7,8,8.1,10 v2.12.28

16.1.1. New features

Panel & HMI

1. Command button “M” for Siemens PCU50 is now re-enabled

16.1.2. Bug fixing

Balancer

1. Incorrect signalling "Cycle in progress" on NOL-ON command
2. Absolute part program 3 – incorrect algorithm parameters

VM Service

1. Back-up file portability on different device instance (i.e. Balancer 1 backup, restorable on Balancer 3)

17. VM15 package v120.180621

IMPORTANT (1)

Existing VM15 system, equipped with version up to v120.160921, must be first upgraded using the firmware defined as “VM15_UpgradePatch_v120_170428.BSz15” and following the procedure indicated in Annex A

IMPORTANT (2)

Package version older than v120.171003 might be not upgradable by USB port, using the standard procedure.

In order to upgrade the system by USB port it is necessary to proceed as follow.

- 1) By VMx Service prepare a USB key for software update
- 2) Execute the software update of the VM15 panel following the standard procedure keeping pressed the button “8” while panel re-boot
- 3) Execute the software update of the complete system following the standard procedure

17.1. Package composition

ID	Version	Description / Notes
VM15_UpgradePatch Firmware to update systems with version up to v120.160921 (1)	VM15_UpgradePatch_v120_170428.BSz15	<ul style="list-style-type: none"> ▪ Panel VM15 Cx300 v120.170428 ▪ Balancer v120.170428 ▪ Gauge v120.170428 ▪ Touch Detector v120.170428
VM15 Firmware	Vm15_v120_180620.BSz15	<ul style="list-style-type: none"> ▪ Panel VM15 Cx300 v120.180620 ▪ Balancer v120.180524 ▪ Gauge AG v120.180528 ▪ Touch Detector v120.180517 ▪ Multinet v120.180620
VM15 HMI	v120.180621	
VM Service	v120.180621	
User document	v120.180619	<ul style="list-style-type: none"> ▪ Updated accordingly (English only)
USB-485 Driver	v2.08.24 v2.12.28 (certified)	<ul style="list-style-type: none"> ▪ Win XP v2.08.24 ▪ Win 7,8,8.1,10 v2.12.28

17.1.1. New features

Panel & HMI

1. Management of new setup parameters for BN card
2. Re-boot signalling in case of changement in configuration parameters
3. Management of multinet card

Balancer

1. New configuration parameters (it requires panel or HMI version v120.180620 or higher)
2. Cycle in-progress signal remains active until the collector is powered off.
3. Manual movement of balancing head activates the “cycle in-progress” signal

Multinet

1. Added to Vm15 system

User Document

1. Updated accordingly (English only)

17.1.2. Bug fixing

HMI

1. Phase in balancer polar diagram grows in CCW direction

Gauge

1. Digital Output - Roundness in-process: blinking under certain condition

VM Service

1. Version error signalling while software update

18. VM15 package v120.180316

IMPORTANT (1)

Existing VM15 system, equipped with version up to v120.160921, must be first upgraded using the firmware defined as “VM15_UpgradePatch_v120_170428.BSz15” and following the procedure indicated in Annex A

IMPORTANT (2)

Package version older than v120.171003 might be not upgradable by USB port, using the standard procedure.

In order to upgrade the system by USB port it is necessary to proceed as follow.

- 1) By VMx Service prepare a USB key for software update
- 2) Execute the software update of the VM15 panel following the standard procedure keeping pressed the button “8” while panel re-boot
- 3) Execute the software update of the complete system following the standard procedure

18.1. Package composition

ID	Version	Description / Notes
VM15_UpgradePatch Firmware to update systems with version up to v120.160921 (1)	VM15_UpgradePatch_v120_170428.BSz15	<ul style="list-style-type: none"> ▪ Panel VM15 Cx300 v120.170428 ▪ Balancer v120.170428 ▪ Gauge v120.170428 ▪ Touch Detector v120.170428
VM15 Firmware	Vm15_v120_180316.BSz15	<ul style="list-style-type: none"> ▪ Panel VM15 Cx300 v120.180316 ▪ Balancer v120.180315 ▪ Gauge AG v120.170830 ▪ Touch Detector v120.180308
VM15 HMI	v120.180316	
VM Service	v120.180316	
User document	v120.170830	<ul style="list-style-type: none"> ▪ Updated accordingly (English only)
USB-485 Driver	v2.08.24 v2.12.28 (certified)	<ul style="list-style-type: none"> ▪ Win XP v2.08.24 ▪ Win 7,8,8.1,10 v2.12.28

18.1.1. New features

Balancer

1. Algorithm parameters in setup or in part program according to “Algorithm parameters mode” parameter.

Panel

1. Added parameter “Algorithm parameters mode” in option page

HMI

1. Added parameter "Algorithm parameters mode" in option page
2. Added "silent mode" for install / uninstall

VM Service

1. Upgrade for new Balancer parameters
2. Added "silent mode" for install / uninstall

USB-485 Driver

1. Balance Systems certified drivers v2.12.28 (for ®Windows 7 or higher).
2. Balance Systems drivers v.2.8.24 (for ® Windows XP)
3. Added "silent mode" for install / uninstall

18.1.2. Bug fixing

HMI

1. Minor bug

19. VM15 package v120.180308

IMPORTANT (1)

Existing VM15 system, equipped with version up to v120.160921, must be first upgraded using the firmware defined as “VM15_UpgradePatch_v120_170428.BSz15” and following the procedure indicated in Annex A

IMPORTANT (2)

Package version older than v120.171003 might be not upgradable by USB port, using the standard procedure.

In order to upgrade the system by USB port it is necessary to proceed as follow.

- 1) By VMx Service prepare a USB key for software update
- 2) Execute the software update of the VM15 panel following the standard procedure keeping pressed the button “8” while panel re-boot
- 3) Execute the software update of the complete system following the standard procedure

19.1. Package composition

ID	Version	Description / Notes
VM15_UpgradePatch Firmware to update systems with version up to v120.160921 (1)	VM15_UpgradePatch_v120_170428.BSz15	<ul style="list-style-type: none"> ▪ Panel VM15 Cx300 v120.170428 ▪ Balancer v120.170428 ▪ Gauge v120.170428 ▪ Touch Detector v120.170428
VM15 Firmware	Vm15_v120_180308.BSz15	<ul style="list-style-type: none"> ▪ Panel VM15 Cx300 v120.171129 ▪ Balancer v120.171103 ▪ Gauge AG v120.170830 ▪ Touch Detector v120.180308
VM15 HMI	v120.171205	
VM Service	v120.171205	
User document	v120.170830	<ul style="list-style-type: none"> ▪ Updated accordingly (English only)
USB-485 Driver	USB-485 Driver v2.08.30 USB-485 Driver v2.12.12	

19.1.1. New features

Touch detector

1. This update is necessary to match the feature of new equivalent components mounted on pcb. The compatibility with older version of pcb is guaranteed.
2. Optimizations in FPGA signal processing (FPGA version 8817)

19.1.2. Bug fixing

none

20. VM15 package v120.171206

IMPORTANT (1)

Existing VM15 system, equipped with version up to v120.160921, must be first upgraded using the firmware defined as “VM15_UpgradePatch_v120_170428.BSz15” and following the procedure indicated in Annex A

IMPORTANT (2)

Package version older than v120.171003 might be not upgradable by USB port, using the standard procedure.

In order to upgrade the system by USB port it is necessary to proceed as follow.

- 1) By VMx Service prepare a USB key for software update
- 2) Execute the software update of the VM15 panel following the standard procedure keeping pressed the button “8” while panel re-boot
- 3) Execute the software update of the complete system following the standard procedure

20.1. Package composition

ID	Version	Description / Notes
VM15_UpgradePatch Firmware to update systems with version up to v120.160921 (1)	VM15_UpgradePatch_v120_17042 8.BSz15	<ul style="list-style-type: none"> ▪ Panel VM15 Cx300 v120.170428 ▪ Balancer v120.170428 ▪ Gauge v120.170428 ▪ Touch Detector v120.170428
VM15 Firmware	Vm15_v120_171206.BSz15	<ul style="list-style-type: none"> ▪ Panel VM15 Cx300 v120.171129 ▪ Balancer v120.171103 ▪ Gauge AG v120.170830 ▪ Touch Detector v120.171114
VM15 HMI	v120.171205	
VM Service	v120.171205	
User document	v120.170830	<ul style="list-style-type: none"> ▪ Updated accordingly (English only)
USB-485 Driver	USB-485 Driver v2.08.30 USB-485 Driver v2.12.12	

20.1.1. New features

HMI

1. Temporarily backgrade to Windows Framework 2.0 to allow installation on low profile hardware with OS Win XP and Win 7.
2. Temporarily disabled Command “View REC data” on touch detector. This task requires Windows Framework 3.0.
3. Temporarily disabled Command button “M” to move in background the VM25-HMI application on Siemens PCU50.
4. Setup does not copy user documentation.

20.1.2. Bug fixing

VM25 HMI

1. Translations.

Panel

1. Translations.

VM Service

1. Minor bug.

21. VM15 package v120.171117

IMPORTANT (1)

Existing VM15 system, equipped with version up to v120.160921, must be first upgraded using the firmware defined as “VM15_UpgradePatch_v120_170428.BSz15” and following the procedure indicated in Annex A

IMPORTANT (2)

Package version older than v120.171003 might be not upgradable by USB port, using the standard procedure.

In order to upgrade the system by USB port it is necessary to proceed as follow.

- 1) By VMx Service prepare a USB key for software update
- 2) Execute the software update of the VM15 panel following the standard procedure keeping pressed the button “8” while panel re-boot
- 3) Execute the software update of the complete system following the standard procedure

21.1. Package composition

ID	Version	Description / Notes
VM15_UpgradePatch Firmware to update systems with version up to v120.160921 (1)	VM15_UpgradePatch_v120_17042 8.BSz15	<ul style="list-style-type: none"> ▪ Panel VM15 Cx300 v120.170428 ▪ Balancer v120.170428 ▪ Gauge v120.170428 ▪ Touch Detector v120.170428
VM15 Firmware	Vm15_v120_171117.BSz15	<ul style="list-style-type: none"> ▪ Panel VM15 Cx300 v120.171115 ▪ Balancer v120.171103 ▪ Gauge AG v120.170830 ▪ Touch Detector v120.171114
VM15 HMI	v120.171115	
VM Service	v120.171116	
User document	v120.170830	<ul style="list-style-type: none"> ▪ Updated accordingly (English only)
USB-485 Driver	USB-485 Driver v2.08.30 USB-485 Driver v2.12.12	

21.1.1. New features

HMI

1. Command button “M” to move in background the VM25-HMI application on Siemens PCU50
2. Updated parameters menu

Panel

1. Updated parameters menu

Touch detector

1. Analog output: programmable peak detector
2. Optimizations in FPGA signal processing (FPGA version 8815)

Balancer

1. NoLink collector management: added ENABLE mode and optimization of NoLink ON and OFF in CONTINOUS mode
2. NoLink collector: optimization of the power save mode

21.1.2. Bug fixing

None.

22. VM15 package v120.171003

IMPORTANT (1)

Existing VM15 system, equipped with version up to v120.160921, must be first upgraded using the firmware defined as “VM15_UpgradePatch_v120_170428.BSz15” and following the procedure indicated in Annex A

IMPORTANT (2)

In order to upgrade the system by USB port it is necessary to proceed as follow.

- 1) By VMx Service prepare a USB key for software update
- 2) Execute the software update of the VM15 panel following the standard procedure keeping pressed the button “8” while panel re-boot
- 3) Execute the software update of the complete system following the standard procedure

22.1. Package composition

ID	Version	Description / Notes
VM15_UpgradePatch Firmware to update systems with version up to v120.160921 (1)	VM15_UpgradePatch_v120_170428.BSz15	<ul style="list-style-type: none"> ▪ Panel VM15 Cx300 v120.170428 ▪ Balancer v120.170428 ▪ Gauge v120.170428 ▪ Touch Detector v120.170428
VM15 Firmware	Vm15_v120_171003.BSz15	<ul style="list-style-type: none"> ▪ Panel VM15 Cx300 v120.171003 ▪ Balancer v120.170907 ▪ Gauge AG v120.170830 ▪ Touch Detector v120.170720
VM15 HMI	v120.170830	
VM Service	v120.170830	
User document	v120.170830	<ul style="list-style-type: none"> ▪ Updated accordingly (English only)
USB-485 Driver	USB-485 Driver v2.08.30 USB-485 Driver v2.12.12	

22.1.1. New features

None.

22.1.2. Bug fixing

Panel

1. Impossible to execute software upgrade by USB port, under certain conditions (2)
2. Programmer login level not enabled

23. VM15 package v120.170907

23.1. Package composition

ID	Version	Description / Notes
VM15_UpgradePatch Firmware to update systems with version up to v120.160921 (*)	VM15_UpgradePatch_v120_170428.BSsz15	<ul style="list-style-type: none"> Panel VM15 Cx300 v120.170428 Balancer v120.170428 Gauge v120.170428 Touch Detector v120.170428
VM15 Firmware	Vm15_v120_170907.BSsz15	<ul style="list-style-type: none"> Panel VM15 Cx300 v120.170907 Balancer v120.170907 Gauge AG v120.170830 Touch Detector v120.170720
VM15 HMI	v120.170830	
VM Service	v120.170830	
User document	v120.170830	<ul style="list-style-type: none"> Updated accordingly (English only)
USB-485 Driver	USB-485 Driver v2.08.30 USB-485 Driver v2.12.12	

(*) IMPORTANT NOTE

Existing VM15 system, equipped with version up to v120.160921, must be first upgraded using the firmware defined as “VM15_UpgradePatch_v120_170428.BSsz15” and following the procedure indicated in Annex A

23.1.1. New features

23.1.2. Bug fixing

HMI / Panel

1. Incorrect menu in Test I/O function of the AG gauge card

Balancer

1. Incorrect management of the input signal B1.pin 6 (Automatic lock)

24. VM15 package v120.170830

24.1. Package composition

ID	Version	Description / Notes
VM15_UpgradePatch Firmware to update systems with version up to v120.160921 (*)	VM15_UpgradePatch_v120_170428.BSsz15	<ul style="list-style-type: none"> Panel VM15 Cx300 v120.170428 Balancer v120.170428 Gauge v120.170428 Touch Detector v120.170428
VM15 Firmware	Vm15_v120_170830.BSsz15	<ul style="list-style-type: none"> Panel VM15 Cx300 v120.170830 Balancer v120.170608 Gauge v120.170830 Touch Detector v120.170720
VM HMI	v120.170830	
VM Service	v120.170830	
User document	v120.161030	<ul style="list-style-type: none"> Updated accordingly

(*) IMPORTANT NOTE

Existing VM15 system, equipped with version up to v120.160921, must be first upgraded using the firmware defined as “VM15_UpgradePatch_v120_170428.BSsz15” and following the procedure indicated in Annex A

24.1.1. New features

System

1. Support copy part program for all devices

Touch detector

1. Improved signal to noise ratio by introducing a new RMS filter on the input signal
2. Optimizations in FPGA signal processing

24.1.2. Bug fixing

VM Service

1. Minor bugs

25. VM15 package v120.170530

25.1. Package composition

ID	Version	Description / Notes
VM15_UpgradePatch Firmware to update systems with version up to v120.160921 (*)	VM15_UpgradePatch_v120_170428.BSz15	<ul style="list-style-type: none"> Panel VM15 Cx300 v120.170428 Balancer v120.170428 Gauge v120.170428 Touch Detector v120.170428
VM15 Firmware	Vm15_v120_170530.BSz15	<ul style="list-style-type: none"> Panel VM15 Cx300 v120.170428 Balancer v120.170428 Gauge v120.170508 Touch Detector v120.170529
VM HMI	v120.170522	
VM Service	v120.170522	<ul style="list-style-type: none"> Updated to manage both VM15 and VM25
User document	v120.161030	<ul style="list-style-type: none"> Updated accordingly

(*) IMPORTANT NOTE

Existing VM15 system, equipped with version up to v120.160921, must be first upgraded using the firmware defined as “VM15_UpgradePatch_v120_170428.BSz15” and following the procedure indicated in Annex A

25.1.1. New features

System

1. Added HMI software application for Windows

25.1.2. Bug fixing

Touch detector

1. Sometimes and with some cards, depending on which setup of AE channels, the reset of limits did not work
2. Analog output now works without peak detection

Gauge

1. Management of the sign bit in the BCD/BIN interface

26. VM15 package v120.170428

26.1. Package composition

ID	Version	Description / Notes
VM15_UpgradePatch Firmware to update systems with version up to v120.160921 (*)	VM15_UpgradePatch_v120_170428.BSz15	<ul style="list-style-type: none"> ▪ Panel VM15 Cx300 v120.170428 ▪ Balancer v120.170428 ▪ Gauge v120.170428 ▪ Touch Detector v120.170428
VM15 Firmware for new systems	Vm15_v120_170428.BSz15	<ul style="list-style-type: none"> ▪ Panel VM15 Cx300 v120.170428 ▪ Balancer v120.170428 ▪ Gauge v120.170428 ▪ Touch Detector v120.170428
VM Service	v120.170327	
User document	v120.161030	<ul style="list-style-type: none"> ▪ Updated accordingly

(*) IMPORTANT NOTE

Existing VM15 system, equipped with version up to v120.160921, must be first upgraded using the firmware defined as “VM15_UpgradePatch_v120_170428.BSz15” and following the procedure indicated in Annex A

26.1.1. New features

Gauge

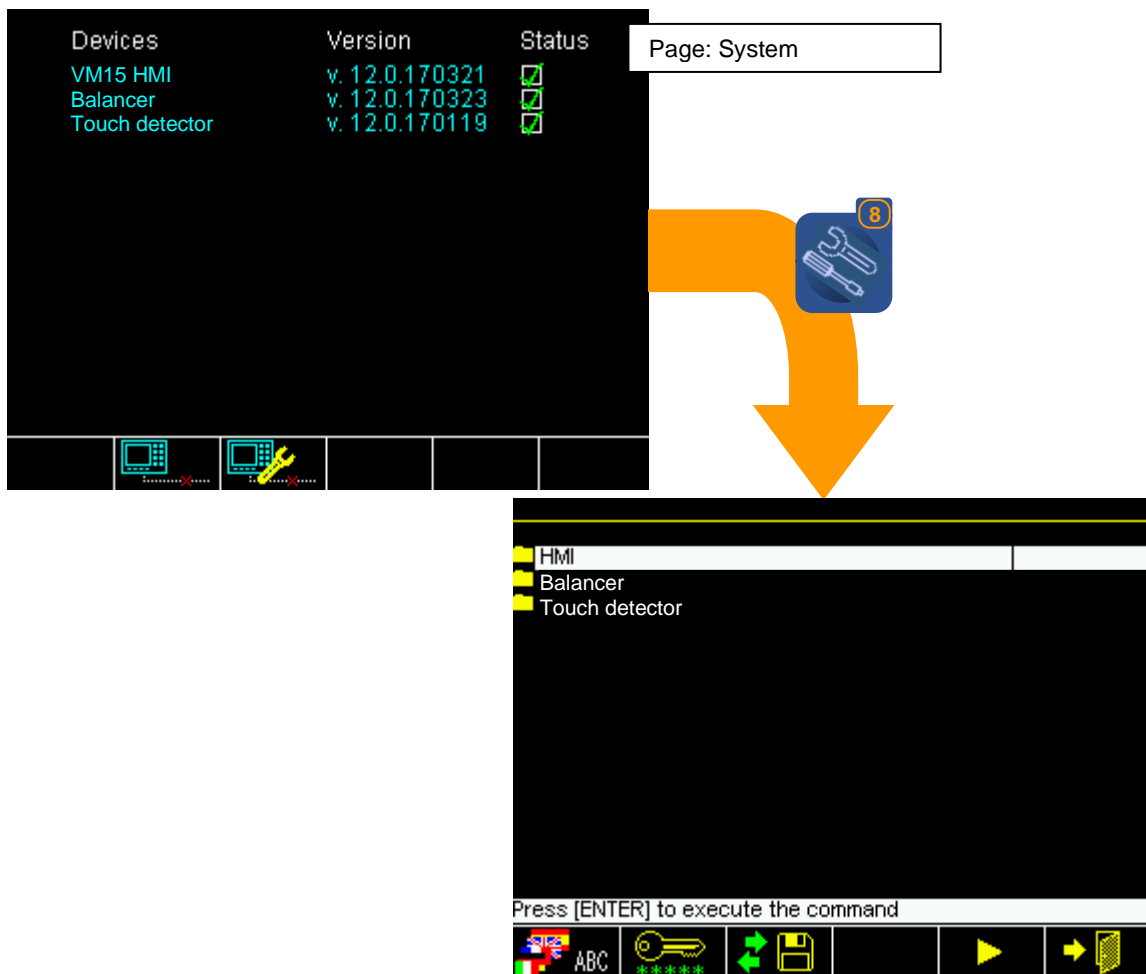
1. Part-program for flagging with related BCD/BIN interface

26.1.2. Bug fixing

None

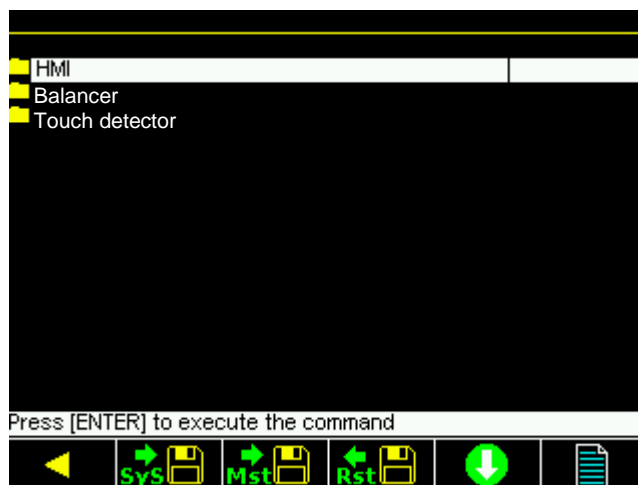
Annex A – Updating Procedure


1. By using VM Service application, prepare a USB pen-drive using the file **VM15_UpgradePatch_v120_170428.BSz15**
2. Insert USB pen-drive on the USB port of the panel (back side, connector H3)
3. On VM15 Panel, starting from system page



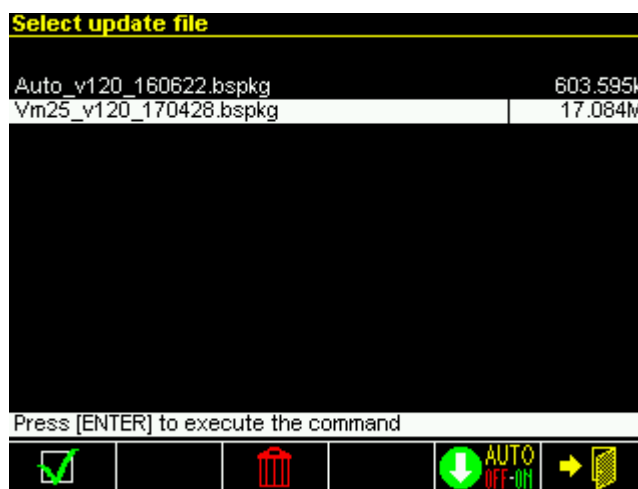
4. With F2, login as INSTALLER (psw: Fn + 1221)


5. With F3, access to update menu

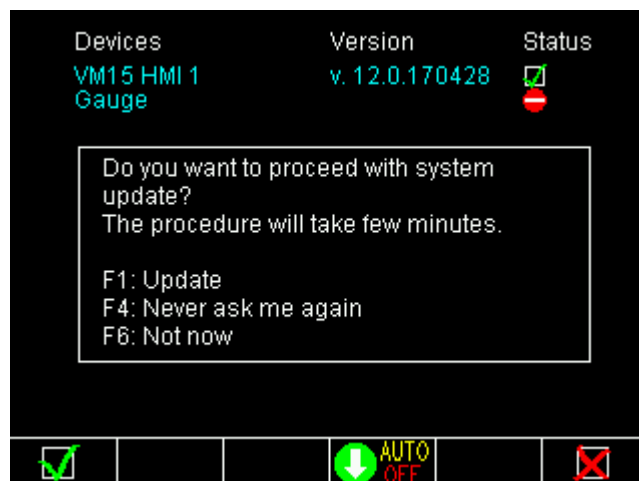



6. Press F5  to access the update file list

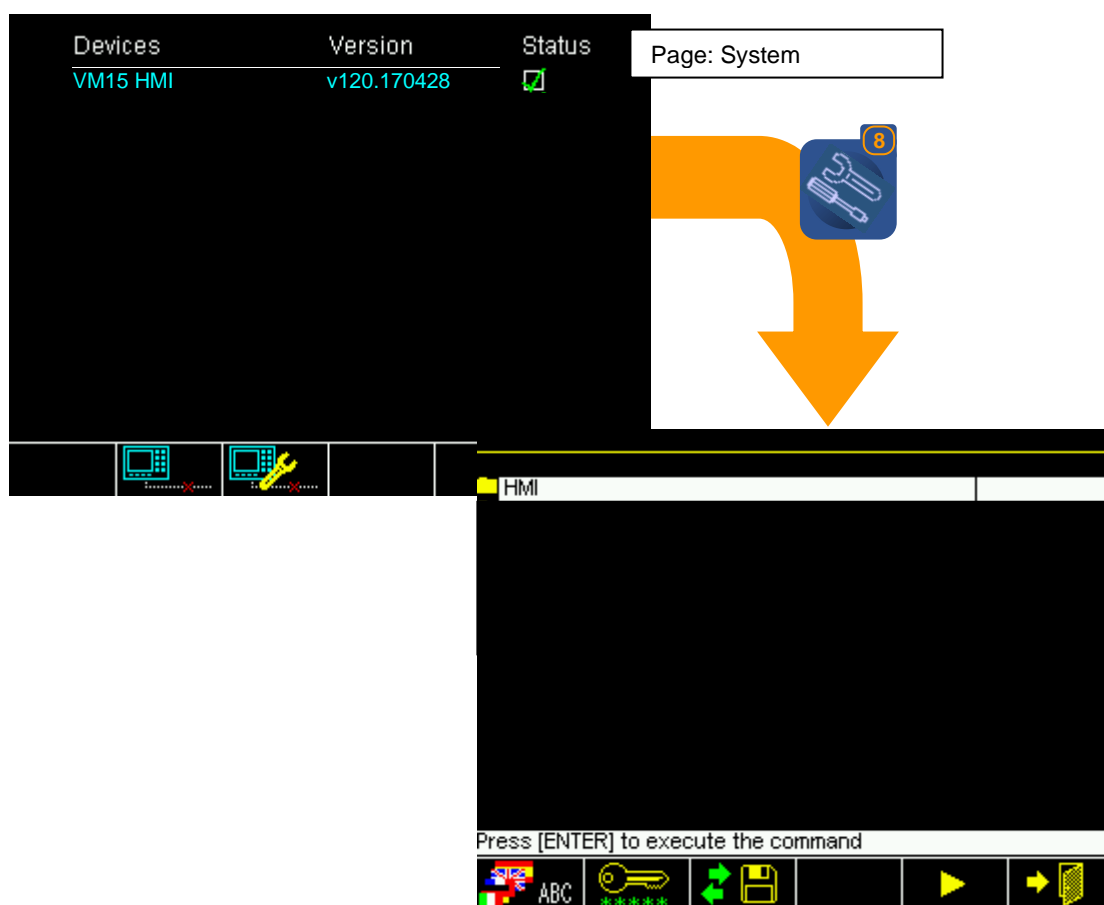
7. Select the update file " Vm25_v120_170428.bspkg "



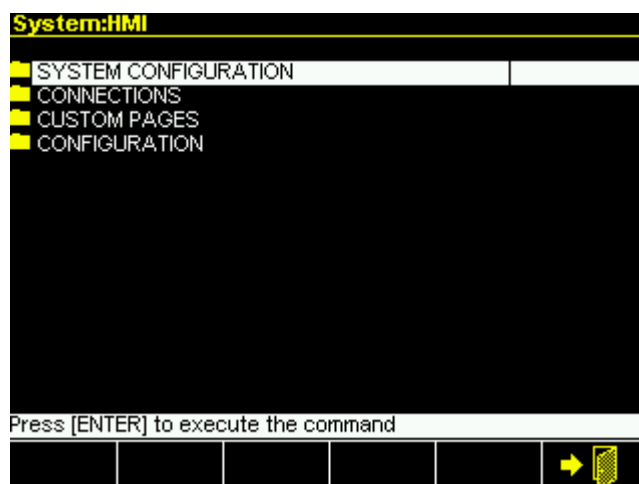
8. Press F1  to start the update process. Please do not turn off the system until the procedure will be successfully completed
9. **ATTENTION:** at the end of the process: " **NO card will be detected** "
10. Turn OFF and ON the VM15 systems
11. At power on, a selection windows appears automatically to complete the auto-update of the systems



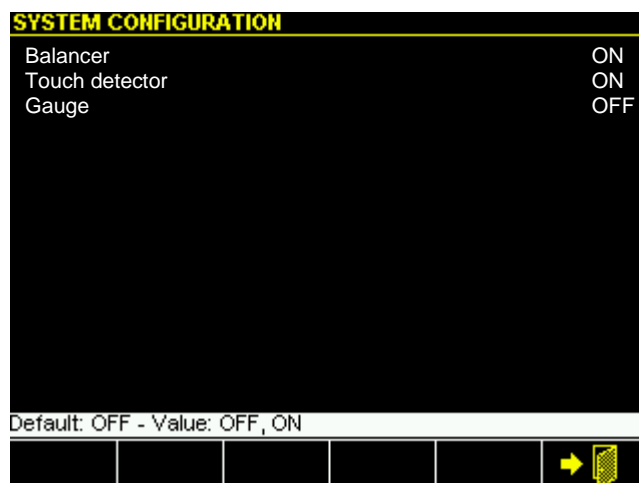
12. Press F1  to start the update process. Do not turn off the system until the procedure will be successfully completed
13. Then the VM15 panel automatically restarts
14. Access the "System configuration" page, to enable the devices



- Select **HMI** folder then press ENTER
- Select the **SYSTEM CONFIGURATION** folder then press ENTER



- Enable the devices. In the example: Balancer and Touch detector



15. Turn OFF and ON the VM15 system.
16. The VM15 System will scan the control unit and displays the new firmware versions of the recognized devices

Devices	Version	Status
VM15 HMI	v120.170428	<input checked="" type="checkbox"/>
Balancer	v120.170428	<input checked="" type="checkbox"/>
Touch detector	v120.170428	<input checked="" type="checkbox"/>



17. Now the VM15 System is ready for further update that can be executed by following the normal procedure

Annex B – Troubleshooting

For additional information related with the update procedures, please refer to VM Service user manual (9UMENX512-1200 yymmdd VMx Service.pdf)

In the following table are described possible errors

MALFUNCTIONS	POSSIBLE CAUSES	SOLUTIONS
The update procedure starts but immediately the VM15 panel restarts	No devices installed into the VM15 control unit	Update the VM15 panel software by using: - the pen drive and the procedure described in the paragraph 3.7.2.3 of the VM Service user manual - the VM Service application and the procedure described in the paragraph 3.5
	The firmware on VM15 panel is older than v120.170428 while the firmware on function card(s) is v120.170428 or higher	
One or more function card with a firmware version are not recognized by a VM15 panel	A function card with a firmware version older than v120.170428 is not recognized by a VM15 panel with software version v120.170428 or higher	Update the firmware on function card by using the VM Service application and the procedure described in the paragraph 3.5. Before to start the procedure, force the VM Service in VM25 MODE (set parameter SYSTEM TYPE = VM25 – ref. paragraph 2.2)