



Stainless steel enclosures/ distribution boxes/ cabinets

Features

- Customer-specific designs also for non-explosion-hazard zones
- Approved in accordance with directive 94/9/EC
- Long service life
- Sea water resistant
- High IP rating
- Ex approval for distribution boxes available
- Flanges on 5 housing walls possible

Description

BARTEC stainless steel housings and distribution boxes are designed and approved for Zone 1 and 2 as well as Zone 21 and 22.

They are particularly suitable for applications under extreme environmental conditions, and they provide reliable protection under heavy loads. The housings are made from 1.4301 (V2 A) or 1.4404 stainless steel (V4 A).

The series includes empty housings and distribution boxes with door or cover. From a housing height of 120 mm, the housings can be supplied with or without flange plates.

In addition to 25 standard sizes, approved customer-specific design variants are also available.

Scope of delivery

The scope of delivery includes wall attachment straps, internal and external PE connection, as well as a mounting plate for the empty housings/distribution cabinets.

➤ Explosion protection

Ex protection type

acc. to EN 60079-0 for empty enclosures/cabinets

Ex II 2G Ex e II

acc. to EN 60079-0 for distribution boxes

Ex II 2G Ex e II T5, T6

Ex II 2G Ex [ia/ib] II C T5, T6

Ex II 2D Ex tD A21 IP65 T 80 °C

Certification

Empty enclosure IBExU99ATEX1118 U

IECEx IBE 09.0016 U

Terminal box IBExU99ATEX1096

IECEx IBE 09.0017

INMETRO (Brazil) 2009ECO2CP015U

GOST-R (Russia) POCC SI.ME 92.B01671

RTN (Russia) PPC 00-33604

Ambient temperature

-20 °C to +40 °C at T6

-20 °C to +55 °C at T5

-55 °C with silicone hose line (only for enclosures without flanges)

➤ Technical data

Material

1.4301, AISI 304 high quality stainless steel

optional

1.4404, AISI 316 L high quality stainless steel

Surface

brushed, painted or electro polished
on request

Standard seals

EPDM

Mechanical strength

Impact energy 7 Nm

Version

with or without gland plated

Standard sizes

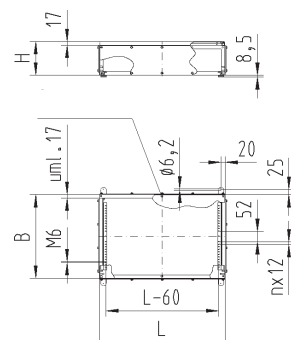
see selection chart

Protection class acc. to IEC 60529

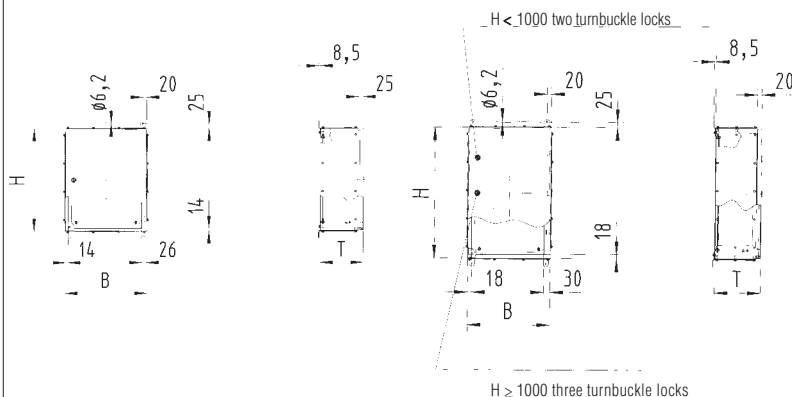
max. IP 66



Enclosure dimensions



Cabinet dimensions





High-quality stainless steel
enclosures/distribution boxes/cabinets

Selection chart

						Gland plates openings minimum depth for flanges 120 mm			
						<div><div>A</div><div>C<div>E</div>D</div><div>B</div></div>			
Version	Code no.	Enclosure with lid in mm (w x h x d)	Code no.	Enclosure with hinged door in mm (w x h x d)	Code no.	Flanges Side A, B, (E)	Code no.	Flanges Side C, D, (E)	Code no.
Empty Enclosure Ex e	1	100 x 100 x 60	17	200 x 300 x 155	51	without	1	without	1
		150 x 150 x 80	01						
Distribution Box Ex e II	2	400 x 150 x 80	10	380 x 300 x 155	54	Face A	2	Face C	2
		200 x 200 x 80	03	300 x 380 x 210	52				
		300 x 200 x 80	22			Face B	3	Face D	3
Distribution Box Ex e [ia/ib] II C	3	150 x 150 x 100	02	400 x 400 x 210	57	Face A + B	4		
		200 x 200 x 120	04	400 x 600 x 210	58				
Distribution Box Ex i II	4	300 x 200 x 120	06			600 x 600 x 210	59	Face E + A	5
		400 x 200 x 120	11	600 x 760 x 210	60				
Distribution Box Ex e I	5	600 x 200 x 120	25			600 x 800 x 300	61	Face E + B	6
		300 x 300 x 120	07	800 x 800 x 300	62				
Distribution Box Ex i I	6	300 x 300 x 160	08			800 x 1000 x 300	63	Face E	8
		380 x 380 x 160	26						
Distribution Box Ex i I	6	400 x 200 x 160	12	800 x 1000 x 300	63	Face E	8	Face E + D + C	7
		400 x 400 x 160	14						
Distribution Box Non-Ex	7	500 x 400 x 160	15	800 x 1000 x 300	63	Face E	8	Face E + D + C	7

or

Complete order no.

Please enter code number.

Example: Ex e distribution box with hinged door

Dimensions: 400 x 400 x 210 mm with gland plates on face B + C + D

Type 07-56D2-5734

07-56 -

Design	Code no.	
	304	316 L
Enclosure with screwed lid	A	B
Enclosure with hinged door	C	D