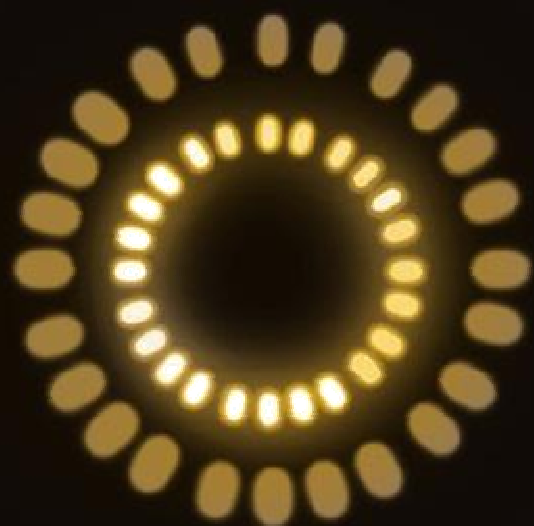




REM

AUTOMAZIONE INDUSTRIALE E
RIPARAZIONE MACCHINE ELETTRICHE





REM

**AUTOMAZIONE INDUSTRIALE E
RIPARAZIONE MACCHINE ELETTRICHE**

Index

1 › Who we are	04
2 › Our philosophy.....	05
3 › The company.....	06
4 › Le nostre attività.....	07
5 › Electromechanical structure.....	08
5.1. › Electromechanical: our partners.....	10
6 › Automation.....	11
6.1 › Automation: The principal sector of intervention.....	12
6.2 › Automation: The principal partners.....	12
7 › Formation	13
8 › The principal clients.....	14
9 › Partners.....	15



1 › Who we are

“The solidity of a company orientated to the future”

“R.E.M. srl”, it is born at the passion and at the entrepreneurial experience ripened in further 50 years of activity in the sector electrician and of the automation.

At present run by Carlo Spaziani, Alfredo Evangelisti and Adele Pace is formed by managers and technical staff provided with a solid professional luggage and with concrete reliability.

QUALITY

PROFESSIONALITY

PUNCTUALITY

they are the features symbols of R.E.M.



The completely innovative approach towards the clientele and the continuous engagement to the continuous improvement, they have ensured to the society a constant growth own abilities and knowledge testified by the satisfaction and by the fidelity of his numerous clients.



2 › Our philosophy

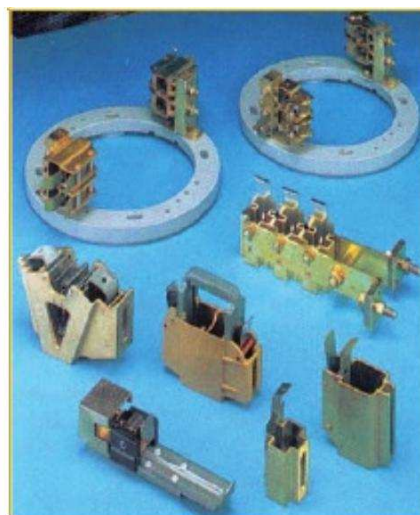
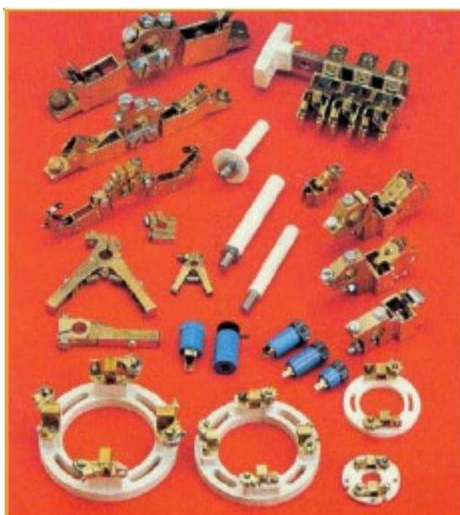
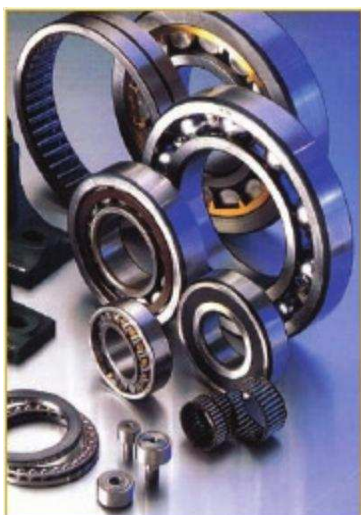
“To be reliable partners for our clients”

A wide managed technical endowment professionals, he is translated for R.E.M. in the ability of answering suitably to the complexity managerial and to the dynamism of the external environment.

The R.E.M. it is able to answer, in reactive way and with solutions always new, to the demands coming the more disparate sectors: automotive, paper, chemical-pharmaceutical, alimentary, aero-spatial, military.



Readiness of action, adequate competences and elevated ability of elaboration return the R.E.M. a choice it self he treats from those who want to place whose trust in a partner able to share the same demands.



Motors, bearings, brush holder, brushes, inverter, drives, PLC and electric/electronic material of the best marks ready delivery.

3 › Company structure

The R.E.M. it is a company to man's dimension where the values of professionalism, quality, correctness, competence and they are shaped ethics i melted together in absolute way.

They represent its greater force much to return possible durable relations with different world leaders in varied sectors.

Modern, dynamic and organised to reply on real time the request of the clients, so R.E.M. is structured in his operative center of Patrica (Fr), where it has 1500 mq comprising, workshop of production, laboratory of electronic repair, warehouse materials and replacement and more 200 mq of technical and administrative offices.

A structure flexible and adjusted continually improvement, an immense range of installations and machinery and one system quality by now very which rooted become daily routine, united to the employment of materials of first qualities, allow with R.E.M. of being of a proposal in the management of the problems and of developing solutions only as only they are its customers, succeeding to being competitive also in the price.



4 › Our activities

“The energy of an experience that is renewed constantly”

An highly competitive growth has been that which has marked R.E.M. in these years: a development founded on technical knowledge, operative reliability and a proved ability of problem solving, that has returned the company a true and own leader of sector.

Been born like electromechanical company the R.E.M. has succe-ssively diversified his activity entering into the sector of the indu-strial automation, acquiring so a more complete vision plant engi-neering.

The typology of offered servicies is wide and diversified, varyng repairing and maintenance of electric motors to the alternating current and it continues, to the design and carrying out of insta-llation of automation system. They do not lack, then all a series of support services to the planning, advance services of integrated engineering and computer science services.



Surge-test on the test of the Electric Machines

System THERMOVISION applied to the installation electric and in test phase motors

NORMAL PHOTO

IR PHOTO

Square Fiat Cassino for the automatic management of the food pumps welding machines unit weldinga (maintenance costant pressure with set point through calendar)

Square management motor AC in ring closed of 264 Kw



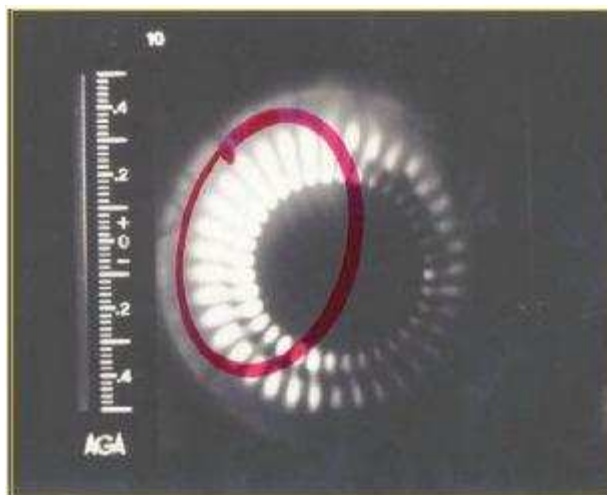
5.1 › Electromechanics

“Sure answers and guarantee of concrete results”

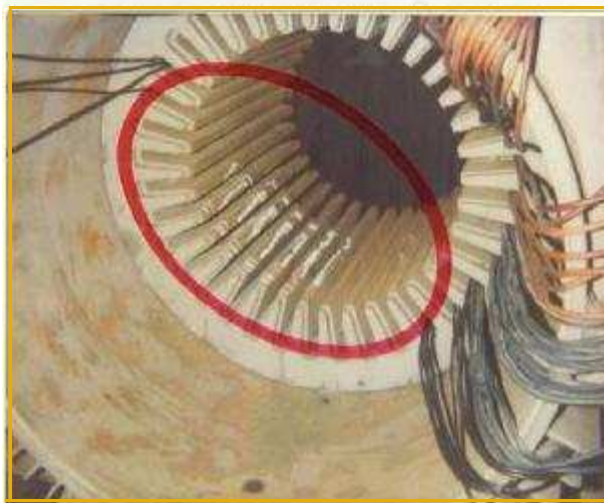
The objective is to guarantee that the job of who is entrusted to competence and to the professionalism of R.E.M. not arrest warrants.

From the most immediate demand to that one more binding, the company is able to answer to every problem in the repair and assistance of electric motors with the maximum cure and guarantee of a fifty-year experience that every new day are renewed and accepts news challenges.

Dynamic and precise answers, an expertise always can increase, a constantly updates instrumentation, allows with R.E.M. to offer timely services and adequate to the necessities of the customers it is if carried out near own workshop it is directly on place.



Motor C.C. 1500 Kw. 600 Volts after dryer to the oven



Test phase lamellar pack motor to means Thermowriting to Infrared rays – RING TEST

Since the heart of your work is also ours, we have adopted the concept of “Predictive Maintenance”, that is we try to resolve the problem before it is shown.

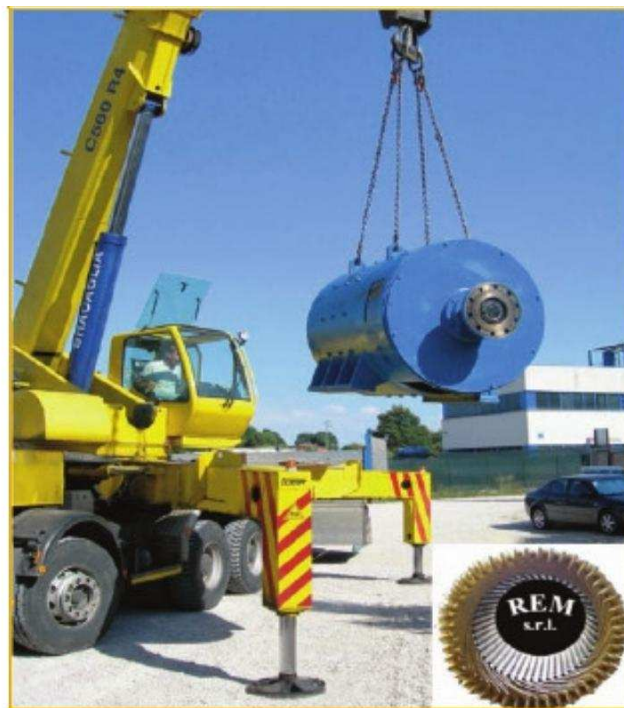
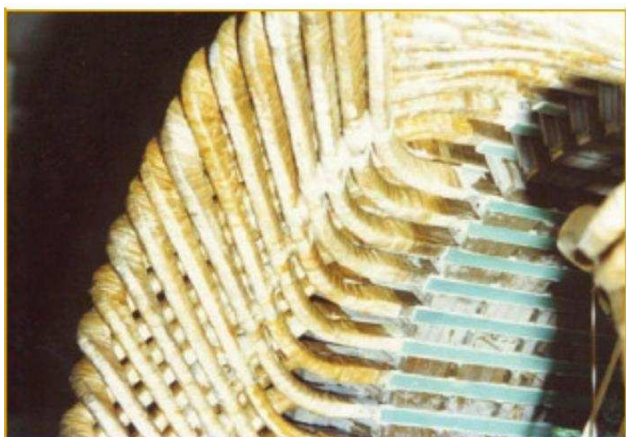
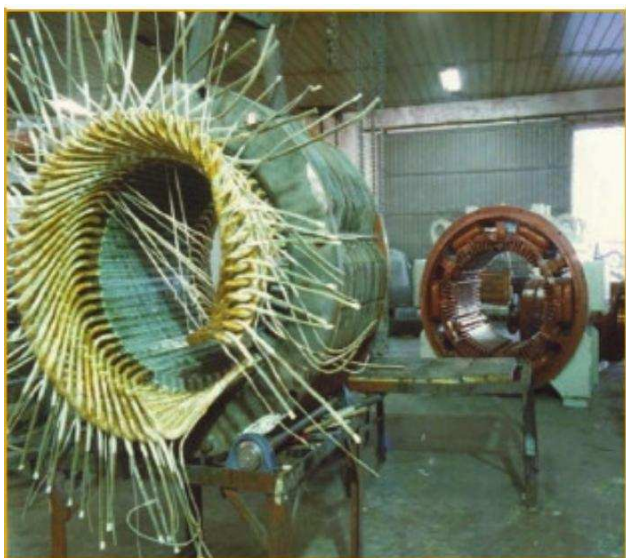
The R.E.M. it is in degree, in fact, of supplying a report to the state of the machines in the way of allowing the programming of the interventions of maintenance, reducing so it costs and times of stop the installations, through the adoption of proofs of not destructive character able to establish the state of insulation of the electric machines (it measures the index of polarisation, of tangent H and losses in the dielectric), as well as the thermic controls that they let individualise possible locate overheating.



In the certitude that the good result of an interventions shares always a correct diagnosis the R.E.M. it submits each motor to test and accurate analysed it to individualise breakdowns and to study the causes it.

Each intervention is carried out by the maximum time-liness and each passage, from the acceptance to the delivery, it is documented, guaranteeing so for each motor the identity, the transparence and the duration on the time.

From the disassembly to the rebuilding, the repairing to it revises up to the modifications of the electric and/or mechanical characteristics, the operative ability of the R.E.M. he is such to allow them to pake part indifferently on alternators, dynamos, synchronous motors and asynchrous (BT and MT), to the continous current, vectorial, with which wrapped up rotor, brushless, motors generators and electropumps; as well as to offer dynamic balancing, analysis vibrations and thermowriting.



Check motor Marelli of 700 Hp

Structural phase of some motors in M.T.

Constructive detail of motor ASEA from Kw 1100 in M.T.

5.1.1. › Electromechanics: our partners

The R.E.M. it is also:

Authorised workshop and i hit centre of assistance Fimet for the center-south Italy and islands

Fimet agency for the Lazio

Advised workshop Siemens

Advised workshop Control Techniques

Partner SPM

Center assistance for the center-south Italy and islands SIMOTOP

Authorized center assistance Faggiolati PUMPS

Center assistance for the center-south Italy and islands FELM

The logo for FIMET, consisting of the word "FIMET" in a bold, black, sans-serif font.The logo for SIEMENS, consisting of the word "SIEMENS" in a blue, sans-serif font.

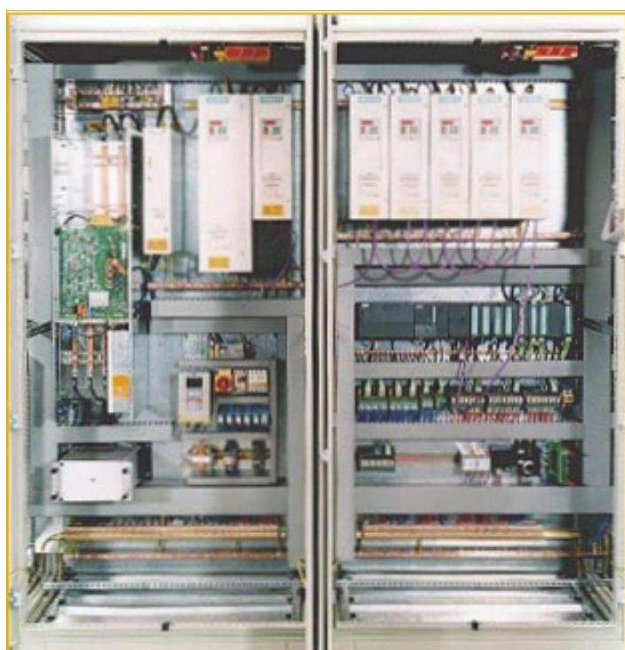
6 › Automation

“Performant solution to the service of your company”

The R.E.M. he wants to represent a philosophy reference and structural method for the design and carrying out of innovative solutions and services put forward in partnership with the clients in the distribution of electric and industrial automation when the needs were coming early than market.

To be a technological partner, to create synergies with client when more possible line was accompanying it how much attainment of optimal productive solutions, realised with characteristics of the vanguard and of new technology, contributing to the success of the clients with quality solutions, this is the objective of the R.E.M..

The by now tested staff and always continually updating, together to the collaborations with partners international, they assent to the R.E.M. of planning and to realise installations and automated machinery "key in hand", as well of offering technological solutions you advance Plots segment dumper Booster Missile Ariane also on installations and preexistent machinery; following each single phase in the least details, from the installation, to the start-up, a efficient service post sale, that support the customer with the technical assistance, the teleassi-stance and the spare parts.



Squares command line cut sheet Fiat Cassino – Press Center
(29 mt of carpentry – three PLC S7-300 319F in net – 8 panels
operators – 32 drives in net – 55 encoder for positioning
- about 2200 I/O)

Multiaxes management

6.1 › Automation: the principal intervection sector

“A time the technology was the purpose today it is the means”

Industrial electric plants in MT and BT	
Plants for grinding and storage of inert and for cement production and bituminous asphalt Lines for winder, cut, rewinder, storing of the sheet	
Robotised islands, feeder feeding tape, positionaters generally, pick & place, conveyors	
Mechanical and hydraulic pressinf for deformation plate, transfer under pressing, portal to cartesian axes Automatic warehouse	
Retrofitting of lines of production and machines	
utensil Special machines, prototypes	
System of static and dynamic weighing	
Design completes installations, hardware and software for account third persons	
Carrying out squares electric of automation also for account third persons	
Service with us hardware and software (plant engineering, PLC, drives, electronic cards generally) close to the client Repairing electric and electronic equipment	
Answering evaluation of the risks to the D.lgs	
81/08 Planning, putting in safety and certification	
of machine Programming course for PLC	
Programming course for HMI and SCADA	
programming course for inverter and drives is in alternated that in continuous	

6.2 › Automation: the main partners

M System Integrator Bosch Rexroth for all the Italian territory (Drives, Motors, PLC)

M System Integrator ABB for the center-south Italy and islands (Drives C.C.)

M System Integrator Pilz

M Center development processes and technologies on platform :

- › Siemens
- › Control Techniques
- › Mitsubishi
- › Allen Bradley
- › Omron
- › Phoenix Contact
- › Proface
- › Movicon
- › Intellution
- › Vipa
- › Pilz
- › Comau Robotics

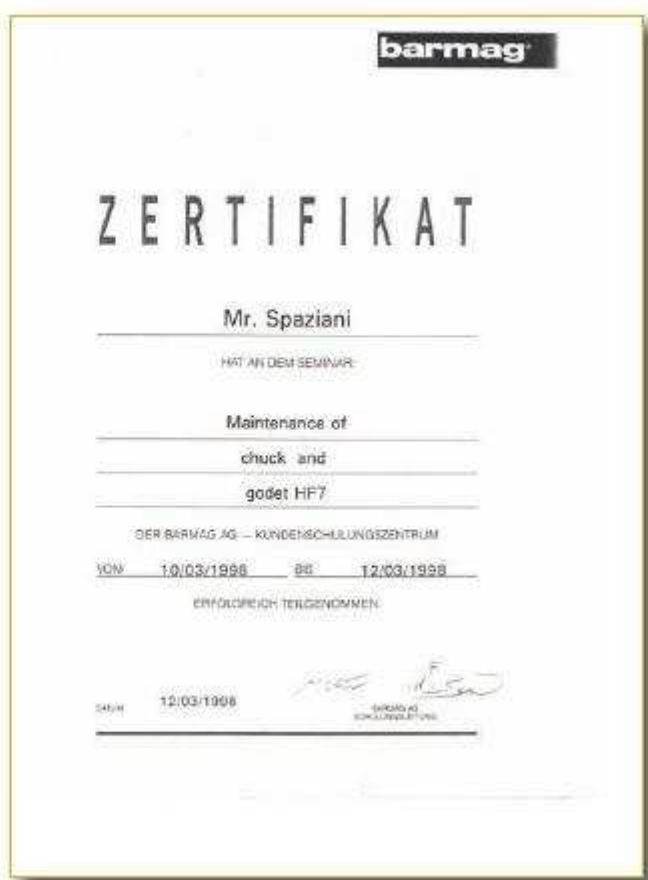


7 › Formation

"The school in the company, we help to create the strenght work of the tomorrow"

The R.E.M. he looks far and therefore it invests in the future of the young people, putting on know-how and the enthusiasm of its employee to service of the schools (Technical and Professional Institutes), so approaching the system of the education that of the job, heading at the formation in structural and organized way, contributing to develop those competences asked by the market so to return the frontier with the world of the instruction to that of the more and more easy work.

In order to keep up with the continuous technological evolutions R.E.M., being joined the technical competence to the experience didactics, offers moreover, to the companies interested, advising, planning and distribution of formative high plans technological content looked to the maintenance men, programmers of PLC, drives and service in generals terms.



8 › The principal clients

- › ACS DOBFAR
- › ACEA
- › ALENIA
- › ALCOA
- › ANGELINI
- › ARIA
- › ASM
- › AVIO
- › BRISTOL MYERS SQUIBB
- › BUZZI UNICEM
- › BIMO ITALIA
- › BOSTON TAPES
- › CARTIERE BURGO
- › CARTIERE RENO DEI MEDICI
- › CARTIERA DI TIVOLI
- › CARTIERA DI GUARCINO
- › CEMENTI DELLA LUCANIA
- › CONSORZIO DELLA BONIFICA PONTINA
- › DENSO MANUFACTURING
- › DIANO CEMENTI
- › DIANO SIDERURGICA
- › ENEL GREEN POWER
- › F.LLI PLOCCO
- › FIAT AUTO
- › FIAT POWER TRAIN
- › F.M.A.
- › FONDAZIONE TEATRO DELL'OPERA DI ROMA
- › GRUPPO PROMA
- › GRUPPO VIBAC
- › HYDRO ALLUMINIUM
- › ISOPAN S.P.A
- › ISTITUTO POLIGRAFICO DI STATO
- › ITALCEMENTI S.P.A
- › I.T.M.
- › MANULI RUBBER INDUSTRIES
- › MARANGONI S.P.A
- › NOVOLEGNO S.P.A.
- › OFFICINE MACCAFERRI S.P.A
- › ORIMARTIN
- › PILKINGTON S.P.A
- › HEINZ (PLASMON)
- › PRYSMIAN CAVI S.P.A.
- › PROCTER & GAMBLE
- › SEVEL
- › SIPLAST / IRRITEC
- › SITI INDUSTRIE GROUP
- › SOLAGRITAL S.P.A.
- › SOFIR
- › TECNOCOMPAUND S.P.A.
- › TREFAN

9 › Partners



Power and productivity
for a better world™

Competence Centre

pilz
the spirit of safety

OMRON



FAGGIOLATI PUMPS S.p.A.
www.faggiolati.com
15031 - 15031
EN 12980 (A1/A2)



Investire in innovazione tecnologica significa capire le esigenze del Cliente, quindi progettare una vera e propria soluzione robotizzata più che offrire un semplice prodotto-robot.

Un obiettivo che oggi Comau Robotics persegue grazie a una stretta collaborazione con partner dedicati, i Preferred System Integrators. Proprio per questo abbiamo deciso di dedicare a loro una sezione del nostro nuovo sito con una panoramica dei vari settori applicativi di loro competenza ed eccellenza.



Per accedere direttamente alla sezione cliccate QUI.

ROBOTIZZATEVI: www.robotics.comau.com
sales +39 011 0045406 - sales.robotics@comau.com assistenza +39 011 0045553 - service.robotics@comau.com



Rexroth
Bosch Group

System Integrator





R.E.M. s.r.l.
Via Ferruccia, 16/a – 03010 Patrica
(FR) Tel. 0775 830116 – Fax 0775
839345 info@rem-motori.it
www.rem-motori.it



Dasa-Rägister
EN ISO 9001:2008
IQ-0310-05

